

# Office Property for Lease

409 NE 28th Street, Oklahoma City, OK 73105



## BUILDING PROFILE

Available SF:	2,000 - 14,000 SF
Building Size:	43,200 SF (3 Stories)
Lease Rate:	Negotiable
Lease Type:	Full-Service
Year Built:	1983
Submarket:	North

## PROPERTY OVERVIEW

- Excellent access to I-235
- Located within a half-mile of State Capitol
- Newly upgraded mechanical systems
- Newly replaced windows throughout building
- After-hours secured access
- Large floor plates with minimal obstructions for wide range of office layouts

**TRE DUPUY**  
405.239.1210  
tdupuy@priceedwards.com  
priceedwards.com



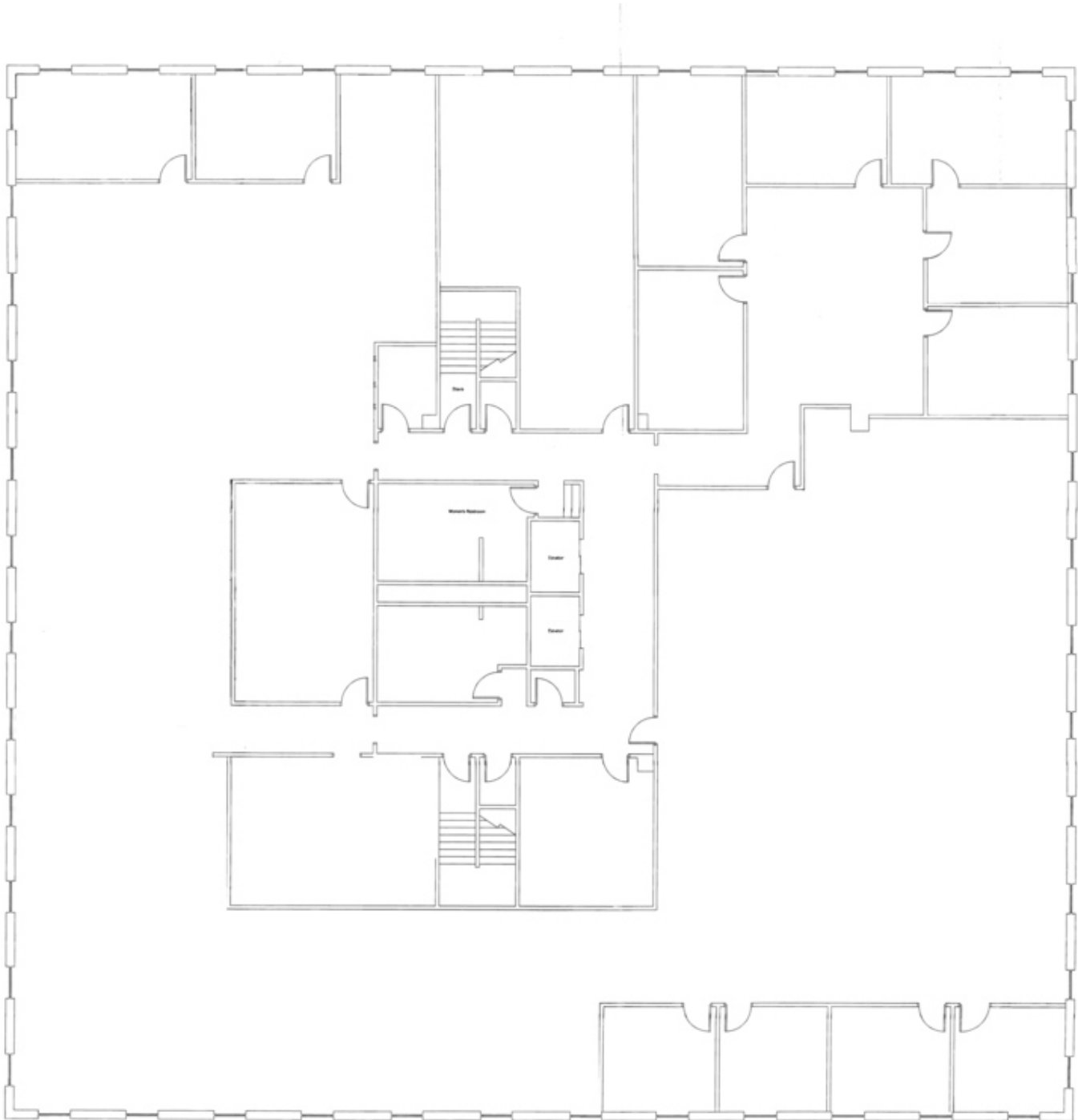


TRE DUPUY  
405.239.1210  
tdupuy@pricedwards.com  
pricedwards.com



# Office Property for Lease

409 NE 28th Street, Oklahoma City, OK 73105



Second Floor

**TRE DUPUY**  
405.239.1210  
tdupuy@priceedwards.com  
priceedwards.com