

# IBC Tower

2250 East 73rd Street, Tulsa, OK 74136



## OFFICE SPACE FOR LEASE

Contiguous Space:	692 to 1,929 SF
Lease Rate:	\$16.00 SF/YR, Full Service
Suite 360:	1,929 SF
Suite 412:	692

## PROPERTY OVERVIEW

FOR LEASE - IBC Tower with up to 1,929 RSF contiguous available.

\* Common area community/training room, seats up to 100

\* Common area conference rooms, seating up to 20+/-

\* On-site Bank with ATM services

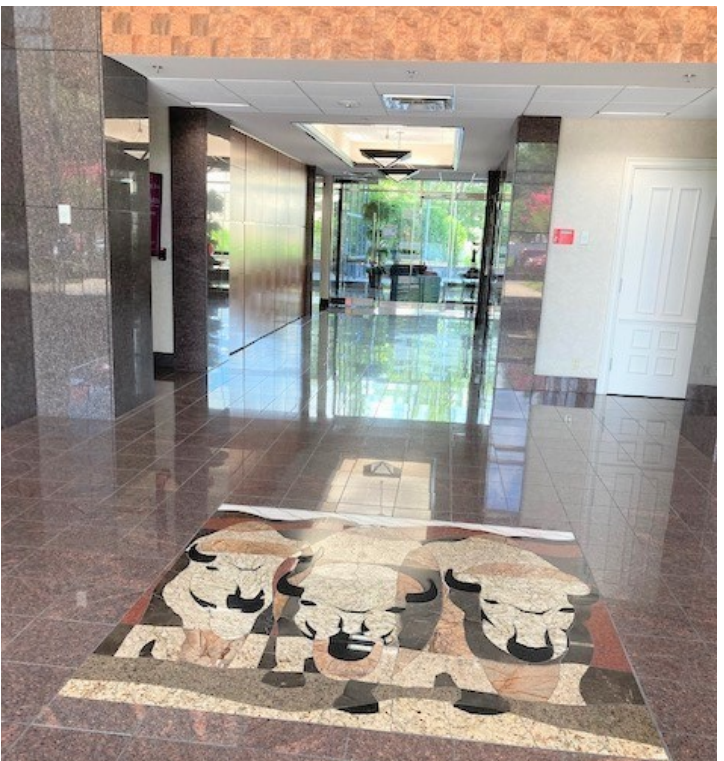
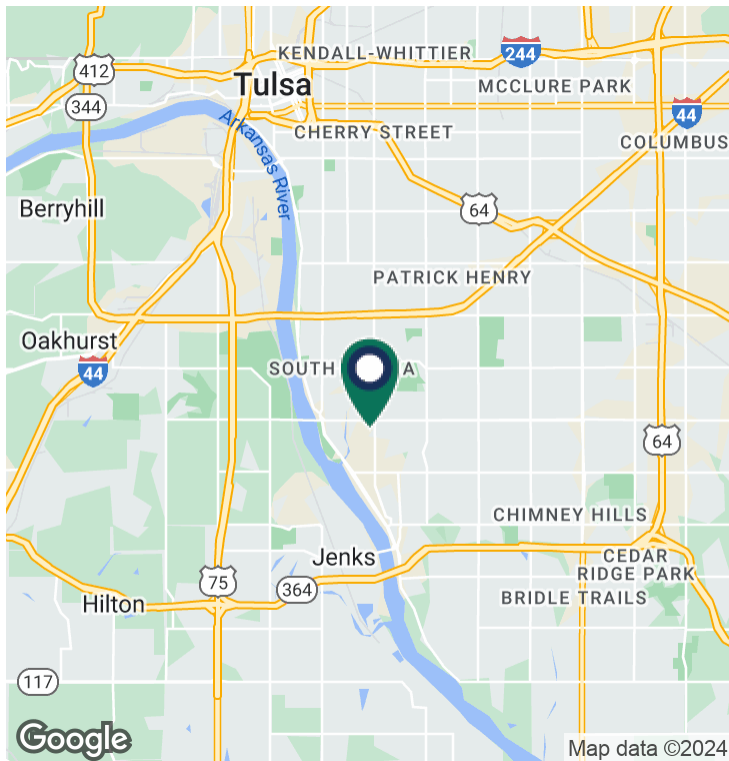
\* On-site Owner

\* Adjacent to Tulsa Marriott Southern Hills - 383 rooms

**TANDA FRANCIS**  
918.394.1000  
tfrancis@priceedwards.com  
priceedwards.com

# IBC Tower

2250 East 73rd Street, Tulsa, OK 74136



**TANDA FRANCIS**  
918.394.1000  
tfrancis@priceedwards.com  
priceedwards.com