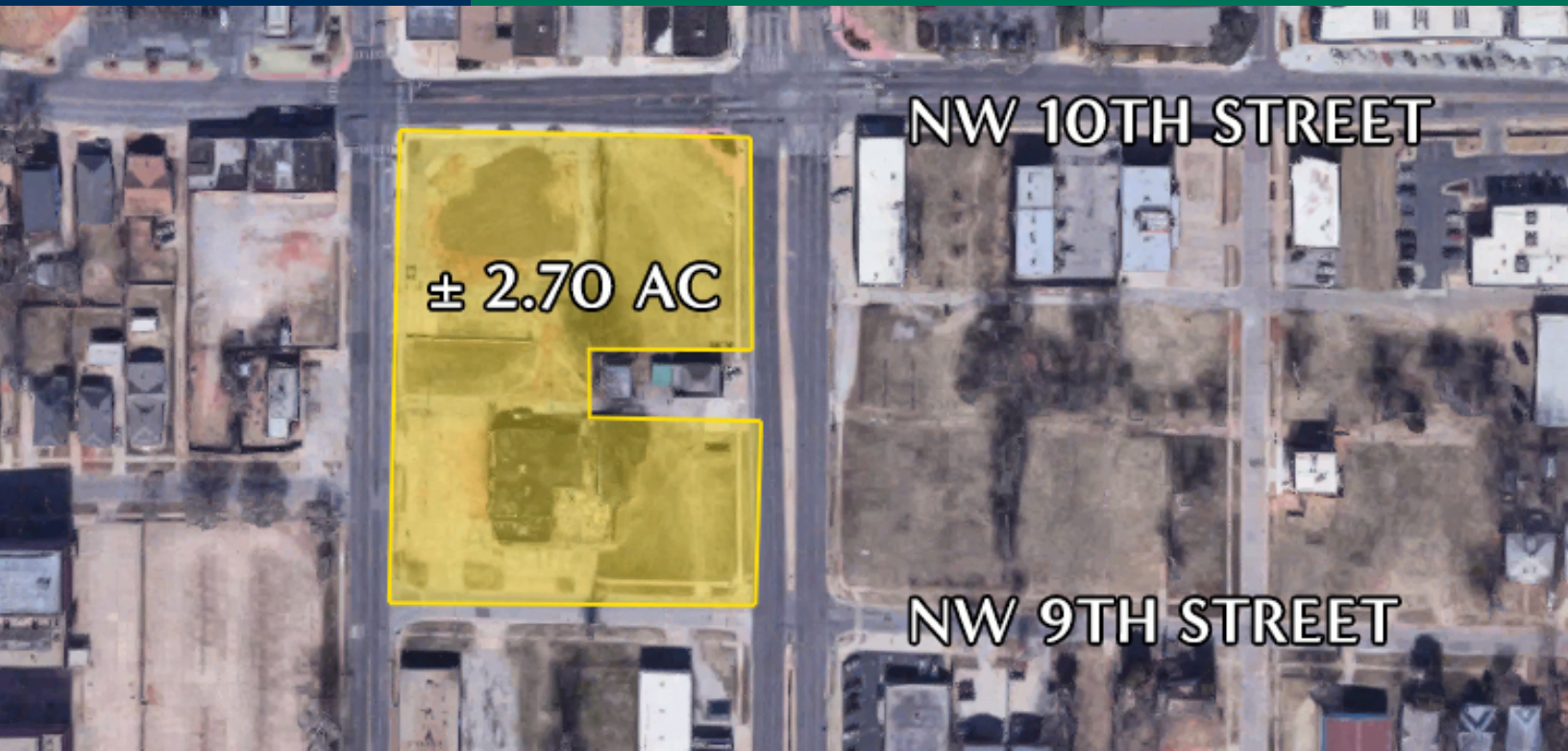


## Development Land For Sale

1025 NW 9th, 1000 N Western, 1030 N Western



**NW 10TH STREET**

**± 2.70 AC**

**NW 9TH STREET**

### OFFERING SUMMARY

Sale Price: Negotiable

Lot Size: ±2.70 Acres

### PROPERTY OVERVIEW

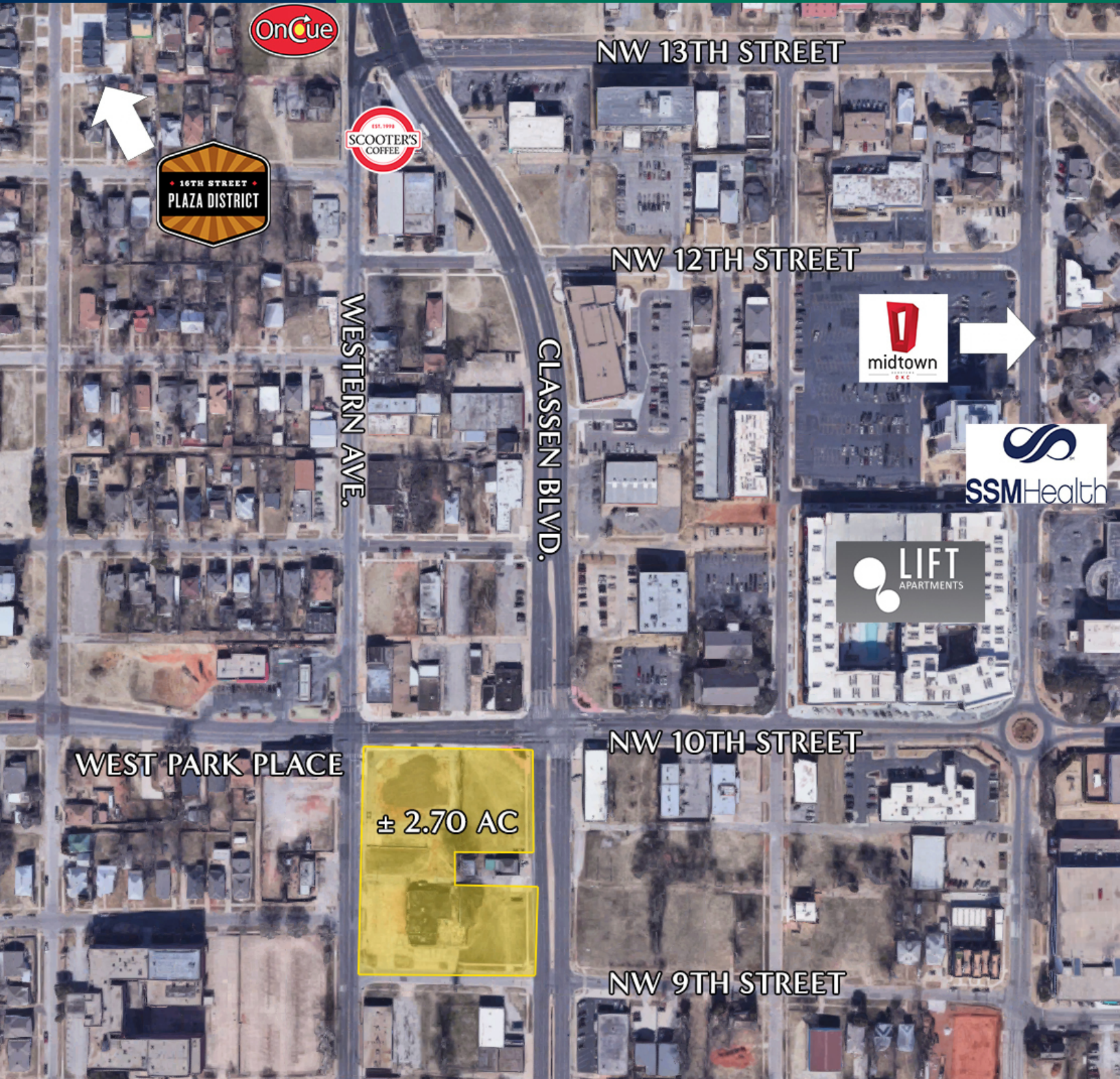
Located between North Western Ave. and N Classen Blvd. on the north side of NW 9th Street. Less than 5 minutes to The Plaza District and Midtown.

### PROPERTY HIGHLIGHTS

- Parcels can be sold together or separately
- Zoned C-3 and C-4
- Located within the federal opportunity zone

**CHRIS ROBERTS**  
405.239.1236  
croberts@priceedwards.com  
priceedwards.com





**CHRIS ROBERTS**  
405.239.1236  
croberts@priceedwards.com  
priceedwards.com