

# 14918 HERTZ QUAIL SPRINGS PARKWAY

Executive Summary



## OFFERING SUMMARY

## VIEW 3D TOUR

Available SF:	3,200 SF
Lease Rate:	\$16.50 SF/yr (MG)
Lot Size:	0.0 Acres
Year Built:	1999
Building Size:	10,015
Market:	Northwest
Submarket:	Memorial Corridor

### TRE DUPUY

Office Specialist  
tdupuy@priceedwards.com  
405.843.7474  
210 Park Ave, Suite 700, Oklahoma City, OK 73102  
priceedwards.com

# 14918 HERTZ QUAIL SPRINGS PARKWAY

Additional Photos



## TRE DUPUY

Office Specialist

[tdupuy@priceedwards.com](mailto:tdupuy@priceedwards.com)

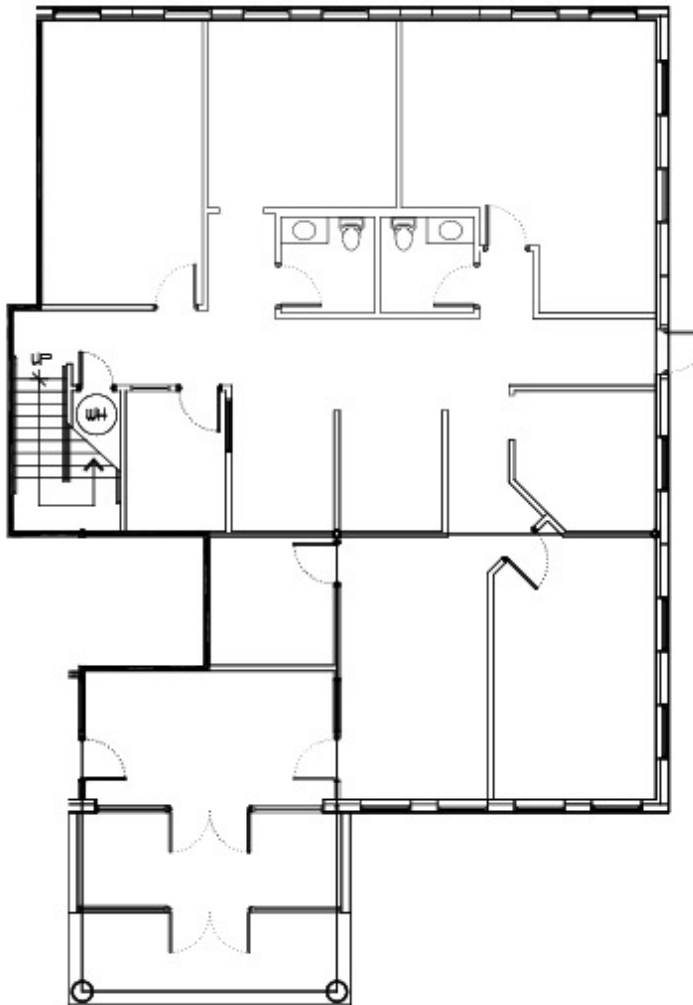
405.843.7474

210 Park Ave, Suite 700, Oklahoma City, OK 73102

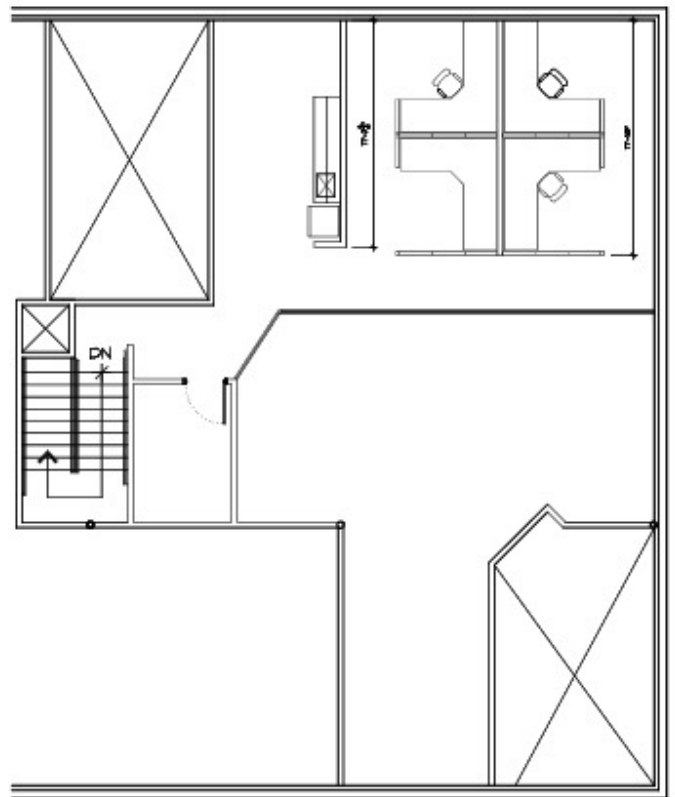
[priceedwards.com](http://priceedwards.com)

# 14918 HERTZ QUAIL SPRINGS PARKWAY

Floor Plans



1 14918 SUITE 200 - 1ST FLOOR  
SCALE: 3/32"=1'-0"



1 14918 SUITE 200 - 2ND FLOOR  
SCALE: 3/32"=1'-0"

## TRE DUPUY

Office Specialist

[tdupuy@priceedwards.com](mailto:tdupuy@priceedwards.com)

405.843.7474

210 Park Ave, Suite 700, Oklahoma City, OK 73102

[priceedwards.com](http://priceedwards.com)

# 14918 HERTZ QUAIL SPRINGS PARKWAY

Location Maps



## TRE DUPUY

Office Specialist

[tdupuy@priceedwards.com](mailto:tdupuy@priceedwards.com)

405.843.7474

210 Park Ave, Suite 700, Oklahoma City, OK 73102

[priceedwards.com](http://priceedwards.com)