

4801 GAILLARDIA PARKWAY

Oklahoma City, Oklahoma



LEASE DETAILS

Available SF: 2,620 - 13,715 SF

Lease Rate: \$24.00/SF/YR

Lease Type: Full Service Gross

Building Size: 74,432

Market: Memorial Corridor

PROPERTY OVERVIEW

4801 Gaillardia is designed to complement the Normandy style of the adjacent Gaillardia Country Club. The lower portions of the building are clad in natural stone. The use of full-height glass and punched windows give the exterior a multi-dimensional presence. The interior is highlighted by a two-story atrium lobby featuring granite floors and walls clad in travertine and dark natural woods which repeat in the upper floor elevator lobbies. The building avails the tenant with views of the golf course on three of its four sides.

PROPERTY HIGHLIGHTS

- Close to numerous restaurants and shopping centers
- 9' ceilings
- Fiber-optic communications
- On-site building engineer
- Golf Course views

TRE DUPUY

Office Specialist
tdupuy@priceedwards.com
405.843.7474
210 Park Ave, Suite 700, Oklahoma City, OK 73102
priceedwards.com

CRAIG TUCKER

ctucker@priceedwards.com
405.843.7474
210 Park Ave, Suite 700, Oklahoma City, OK 73102
priceedwards.com

4801 GAILLARDIA PARKWAY

Available Spaces



SUITE	TENANT	SIZE (SF)	LEASE TYPE	LEASE RATE
Suite 250	Available	13,715 SF	Full Service	\$24.00 SF/yr
Suite 150	Available	3,932 SF	Full Service	\$24.00 SF/yr
Suite 160	Available	2,620 SF	Full Service	\$24.00 SF/yr

TRE DUPUY

Office Specialist

tdupuy@priceedwards.com

405.843.7474

210 Park Ave, Suite 700, Oklahoma City, OK 73102

priceedwards.com

CRAIG TUCKER

ctucker@priceedwards.com

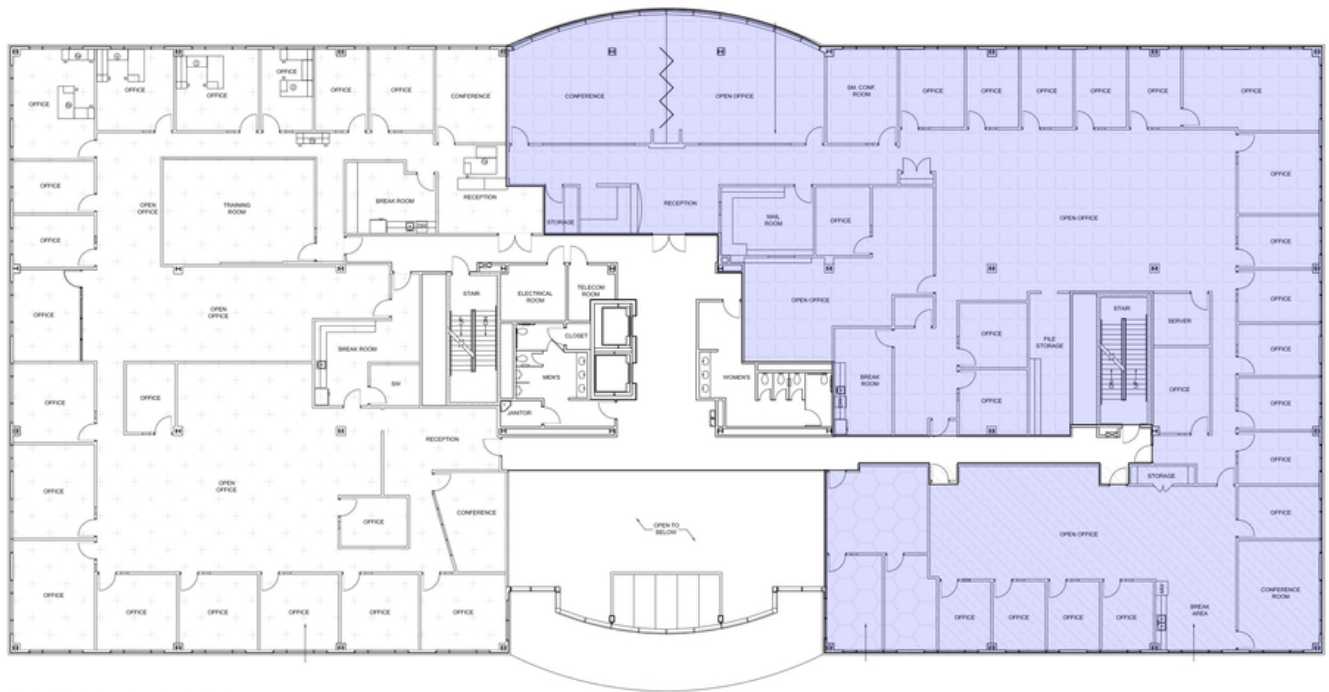
405.843.7474

210 Park Ave, Suite 700, Oklahoma City, OK 73102

priceedwards.com

4801 GAILLARDIA PARKWAY

Floor Plan - Suite 250



2 SECOND FLOOR PLAN
Scale: 1/8" = 1'

TRE DUPUY

Office Specialist
tdupuy@priceedwards.com
405.843.7474
210 Park Ave, Suite 700, Oklahoma City, OK 73102
priceedwards.com

CRAIG TUCKER

ctucker@priceedwards.com
405.843.7474
210 Park Ave, Suite 700, Oklahoma City, OK 73102
priceedwards.com

4801 GAILLARDIA PARKWAY

Floor Plans - Suites 150 & 160



TRE DUPUY

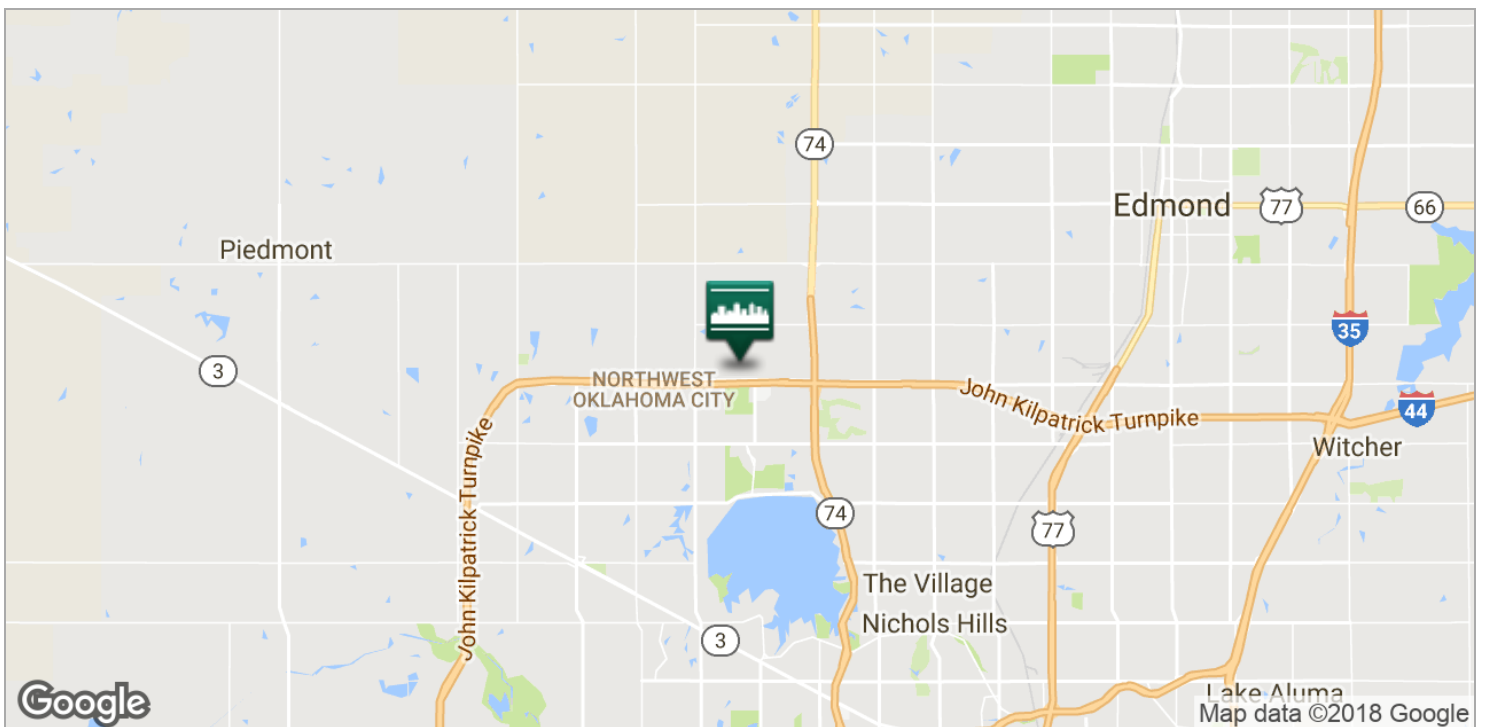
Office Specialist
tdupuy@priceedwards.com
405.843.7474
210 Park Ave, Suite 700, Oklahoma City, OK 73102
priceedwards.com

CRAIG TUCKER

ctucker@priceedwards.com
405.843.7474
210 Park Ave, Suite 700, Oklahoma City, OK 73102
priceedwards.com

4801 GAILLARDIA PARKWAY

Location Maps



TRE DUPUY

Office Specialist

tdupuy@priceedwards.com

405.843.7474

210 Park Ave, Suite 700, Oklahoma City, OK 73102

priceedwards.com

CRAIG TUCKER

ctucker@priceedwards.com

405.843.7474

210 Park Ave, Suite 700, Oklahoma City, OK 73102

priceedwards.com