

# 5400 NW 5TH ST

For Sale or Lease



## OFFERING SUMMARY

Sale Price:	\$9,500,000
Available SF:	77,729 SF
Lot Size:	11.52 Acres
Year Built:	1974
Building Size:	217,328
Renovated:	2008
Zoning:	I2
Market:	West
Price / SF:	\$43.71

### DANNY RIVERA

Industrial Specialist  
drivera@priceedwards.com  
405.408.5449  
210 Park Ave, Suite 700, Oklahoma City, OK 73102  
priceedwards.com

## PROPERTY OVERVIEW

This property is currently available for Sale or lease. McCubbin Hosiery occupies 130,713 +/- SF. Their Lease expires December 2019. The remaining 77,729 +/- SF is available for lease. On the attached Floor Plan the available space is depicted in red and on the attached Site Layout the available space is depicted as B & C

### FOR LEASE

- 77,729 +/- SF
- 8,100 +/- SF OFFICE
- Lease Rate Negotiable
- Tenant Pays Pro Rata Share of Taxes Insurance and Maintenance
- 5 Dock High Doors
- 1 Grade Level
- 28' Clear Height
- Heavy 3 Phase Power

## PROPERTY HIGHLIGHTS

- Concrete Block Construction
- 28'-22' Clear Height
- 11.52 Acres
- 20,000 SF +/- Office
- Heavy 3 phase Power
- 17 Dock High Doors

# 5400 NW 5TH ST

Additional Photos



## DANNY RIVERA

Industrial Specialist

[drivera@priceedwards.com](mailto:drivera@priceedwards.com)

405.408.5449

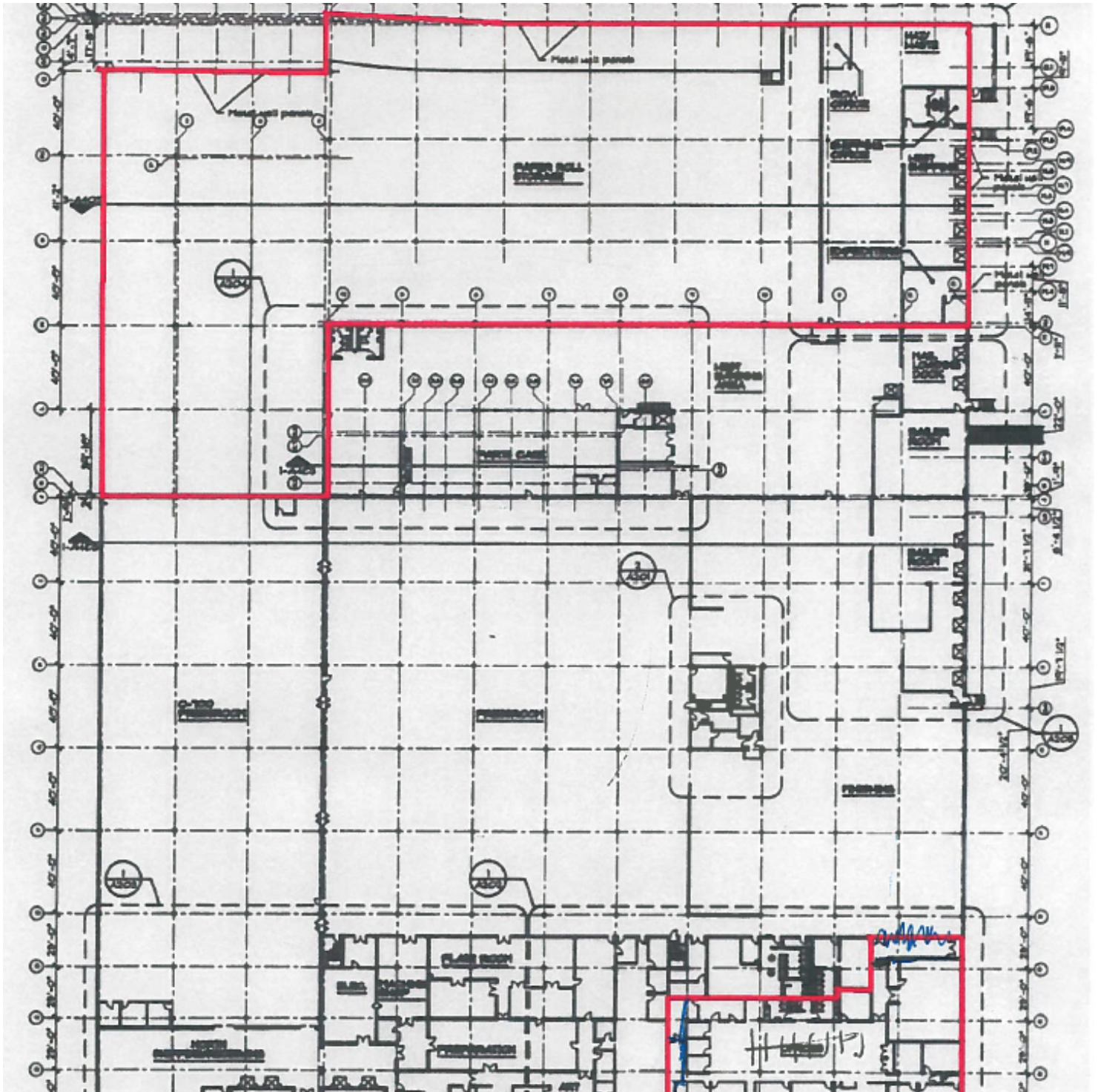
210 Park Ave, Suite 700, Oklahoma City, OK 73102

[priceedwards.com](http://priceedwards.com)

The information above has been obtained from sources believe reliable. While we do not doubt its accuracy, we have not verified it and make no guarantee, warranty, or representation about it. You and your legal and technical advisors should conduct a careful, independent investigation of the property to determine to your satisfaction to the suitability of the property for your needs.



# 5400 NW 5TH ST FLOOR PLAN



## DANNY RIVERA

Industrial Specialist

[drivera@priceedwards.com](mailto:drivera@priceedwards.com)

405.408.5449

210 Park Ave, Suite 700, Oklahoma City, OK 73102

[priceedwards.com](http://priceedwards.com)

# 5400 NW 5TH ST

## SITE LAYOUT



### DANNY RIVERA

Industrial Specialist

[drivera@priceedwards.com](mailto:drivera@priceedwards.com)

405.408.5449

210 Park Ave, Suite 700, Oklahoma City, OK 73102

[priceedwards.com](http://priceedwards.com)

The information above has been obtained from sources believe reliable. While we do not doubt its accuracy, we have not verified it and make no guarantee, warranty, or representation about it. You and your legal and technical advisors should conduct a careful, independent investigation of the property to determine to your satisfaction to the suitability of the property for your needs.