

BROOKHAVEN CENTER

7737 - 7815 NW 94th Street, Oklahoma City, OK 73162



RETAIL SPACE NOW AVAILABLE

Available SF: 3,300 - 8,400 SF
Bldg A Suite 7801 - 3,300 sf
Bldg A Suite 7815 - 4,343 sf
Bldg B - 1,200 sf up to 8,400 sf

Lease Rate: Negotiable

Building Size: Building A - 7,650 sf
Building B - 8,500 sf

Sub Market: Northwest

Cross Streets: N 94th St & Westgate Rd; just north of NW Expressway

PROPERTY OVERVIEW

Brookhaven Shopping Center is a neighborhood center located on NW 94th; just north of NW Expressway off N Council Rd.

Ideally located for service related and office who want a retail presence. Building B - east building is completely rebuilt with proposed suites; the demising walls and plumbing are not in place making this building capable of accommodating up to 8,400 sq ft tenant.

043018

GEORGE WILLIAMS, CCIM

Retail Investment Specialist
gwilliams@priceedwards.com
405.239.1270
210 Park Ave, Suite 700, Oklahoma City, OK 73102
priceedwards.com

EV ERNST

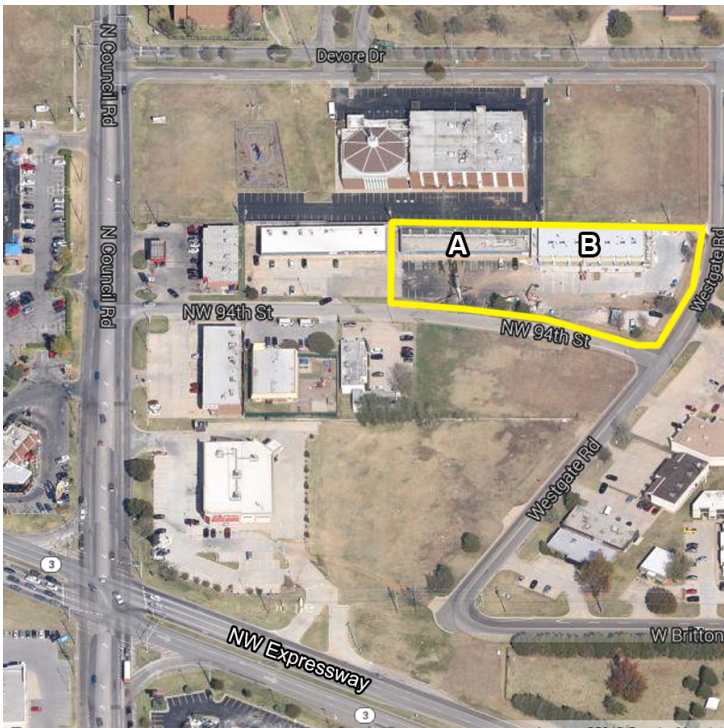
Retail Specialist
ernst@priceedwards.com
405.843.7474
210 Park Ave, Suite 700, Oklahoma City, OK 73102
priceedwards.com

JOSH WHITE, CCIM

Retail Specialist
jwhite@priceedwards.com
405.843.7474
210 Park Ave, Suite 700, Oklahoma City, OK 73102
priceedwards.com

BROOKHAVEN CENTER

7737 - 7815 NW 94th Street, Oklahoma City, OK 73162



DEMOGRAPHICS (per 2010 Census; 5 Miles Radius)

Total Population	127,517
Population Density	127,517
Median Age	38.1
Median Age (Male)	36.7
Median Age (Female)	39.4
Total Households	52,293
# of Persons Per HH	2.4
Average HH Income	\$69,867
Average House Value	\$166,921

GEORGE WILLIAMS, CCIM

Retail Investment Specialist
 gwilliams@priceedwards.com
 405.239.1270
 210 Park Ave, Suite 700, Oklahoma City, OK 73102
 priceedwards.com

EV ERNST

Retail Specialist
 ernst@priceedwards.com
 405.843.7474
 210 Park Ave, Suite 700, Oklahoma City, OK 73102
 priceedwards.com

JOSH WHITE, CCIM

Retail Specialist
 jwhite@priceedwards.com
 405.843.7474
 210 Park Ave, Suite 700, Oklahoma City, OK 73102
 priceedwards.com