

# Geophysical Resource Building 1

8801 South Yale Avenue, Tulsa, Oklahoma

## FOR LEASE



**LEASE PRICE: \$21.00 PSF**

### Property Details

- Class “A” building
- Local ownership
- On-site engineer and 24/7 building services
- Card access security system
- Five (5) story building with upscale finishes
- Beautiful landscaping and duck pond

### Location

- Near 91<sup>st</sup> & South Yale intersection
- Easy access to the Creek Turnpike
- Rapidly growing area includes newly constructed Tuscana on Yale and Yale Village, which provides shopping, several restaurants including Yokozuno, Smashburger, Whole Foods, QuikTrip and banking



**Matt Surret**  
**Price Edwards & Company**  
[msurret@pricedwards.com](mailto:msurret@pricedwards.com)  
918.394.1000 – Office  
918.625.9717 – Cell  
7633 East 63<sup>rd</sup> Place, Suite 400  
Tulsa, Oklahoma, OK 74133  
[www.pricedwards.com](http://www.pricedwards.com)

The information contained herein has been obtained from sources deemed to be reliable; however, Price Edwards & Company does not warranty, confirm or verify any of the information contained herein or its accuracy, nor has Price Edwards & Company conducted any investigation regarding these matters. All potential tenants/purchasers must take appropriate measures to verify all of the information set forth herein.

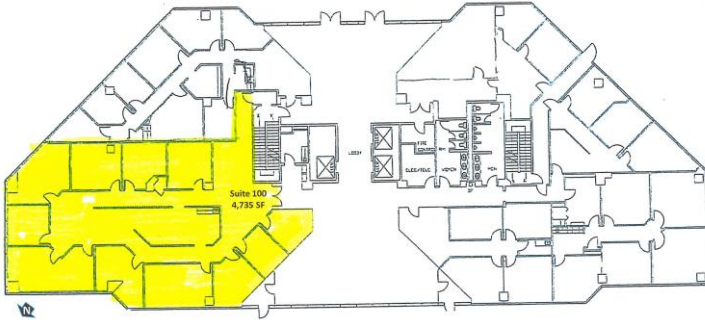
# Geophysical Resource Building 1



## Aerial



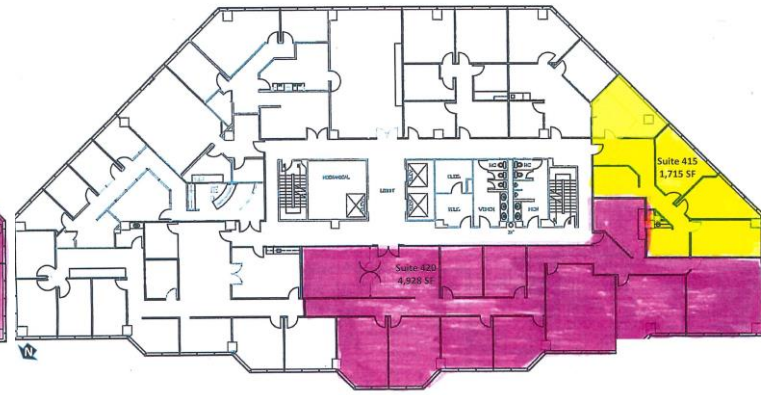
Suite 100 – 4,735 SF



Suite 420 – 4,928 SF

Suite 415 – 1,715 SF

Suite 550 – 3,848 SF



**MATT SURRETT**  
**Price Edwards & Company**  
 918.394.1000 Office  
 918.625.9717 Cell  
 tfrancis@pricedwards.com

The information contained herein has been obtained from sources deemed to be reliable; however, Price Edwards & Company does not warranty, confirm or verify any of the information contained herein or its accuracy, nor has Price Edwards & Company conducted any investigation regarding these matters. All potential tenants/purchasers must take appropriate measures to verify all of the information set forth herein.