

# ONE MEMORIAL PLACE

7633 East 63<sup>rd</sup> Place, Tulsa, Oklahoma

FOR LEASE



## 879 RSF to 9,392 RSF Available

- NEW - common area training room with wet bar, seating up to 30 persons
- Common area break room
- Monument signage
- Modernized elevator cabs and equipment
- New LED lighting throughout the building
- New Plaza area with enhanced lighting and landscaping
- On-site property management and leasing

**Tanda L. Francis**  
**Price Edwards & Company**

7633 East 63<sup>rd</sup> Place, Suite 400  
Tulsa, Oklahoma, OK 74133  
Phone: 918.394.1000 Fax: 918.394.1001  
Email: [tfrancis@priceedwards.com](mailto:tfrancis@priceedwards.com)  
[www.priceedwards.com](http://www.priceedwards.com)



*The information contained herein has been obtained from sources deemed to be reliable; however, Price Edwards & Company does not warranty, confirm or verify any of the information contained herein or its accuracy, nor has Price Edwards & Company conducted any investigation regarding these matters. All potential tenants/purchasers must take appropriate measures to verify all of the information set forth herein.*

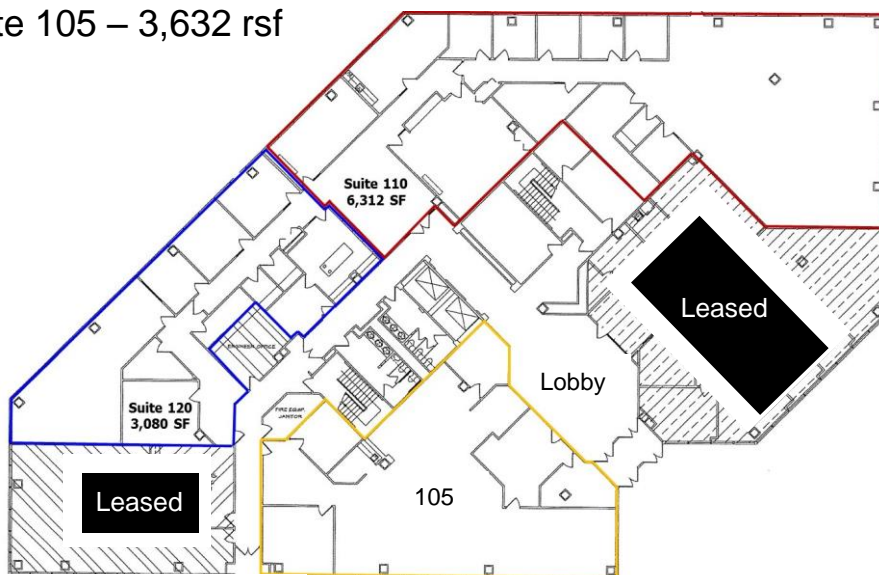
**TCN**  
WORLDWIDE  
REAL ESTATE SERVICES

# One Memorial Place – Floor Plans

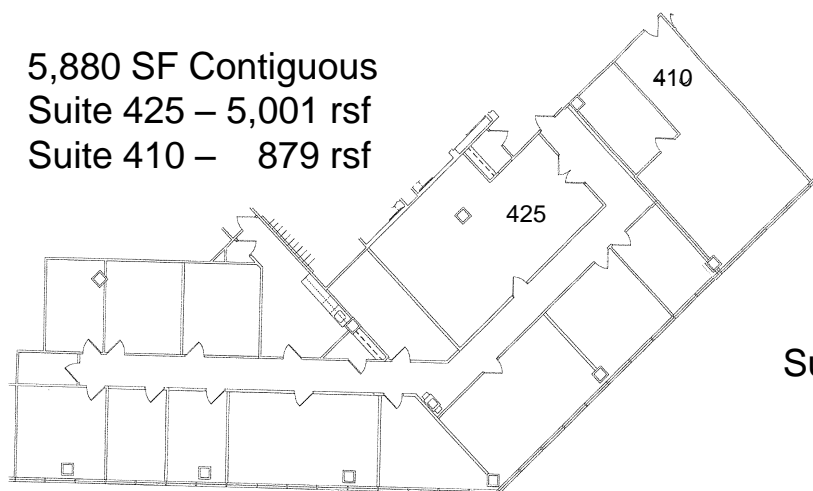
Suite 110 – 9,392 rsf – Divisible  
Suite 105 – 3,632 rsf



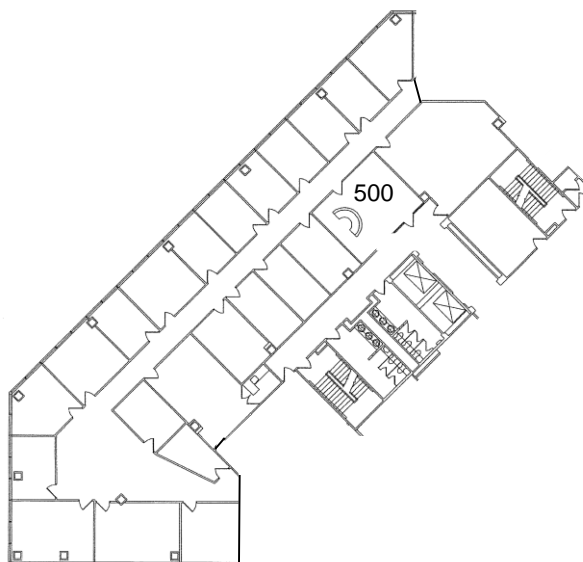
Common Area Training Room



5,880 SF Contiguous  
Suite 425 – 5,001 rsf  
Suite 410 – 879 rsf



Suite 500 – 7,217 SF - Divisible



**TANDA FRANCIS**  
Price Edwards & Company  
918.394.1000 Office  
918.630.9991 Cell  
tfrancis@priceedwards.com

The information contained herein has been obtained from sources deemed to be reliable; however, Price Edwards & Company does not warranty, confirm or verify any of the information contained herein or its accuracy, nor has Price Edwards & Company conducted any investigation regarding these matters. All potential tenants/purchasers must take appropriate measures to verify all of the information set forth herein.