

**FOR LEASE**

# South Lakes Office Park

9222-9224-9226 South Elwood, Jenks, Oklahoma



- 9226-C – 1,250 SF
- 9222-B – 1,250 SF, Available 9/1/19
- Rent Rate – \$17.00 PSF
- Private entrances
- Exterior Building Signage
- Monument Street Signage
- Located across from South Lakes Golf Course



**Tanda L. Francis**

**Price Edwards & Company**

7633 East 63<sup>rd</sup> Place, Suite 400

Tulsa, Oklahoma, OK 74133

Phone: 918.394.1000 Fax: 918.394.1001

Email: [tfrancis@priceedwards.com](mailto:tfrancis@priceedwards.com)

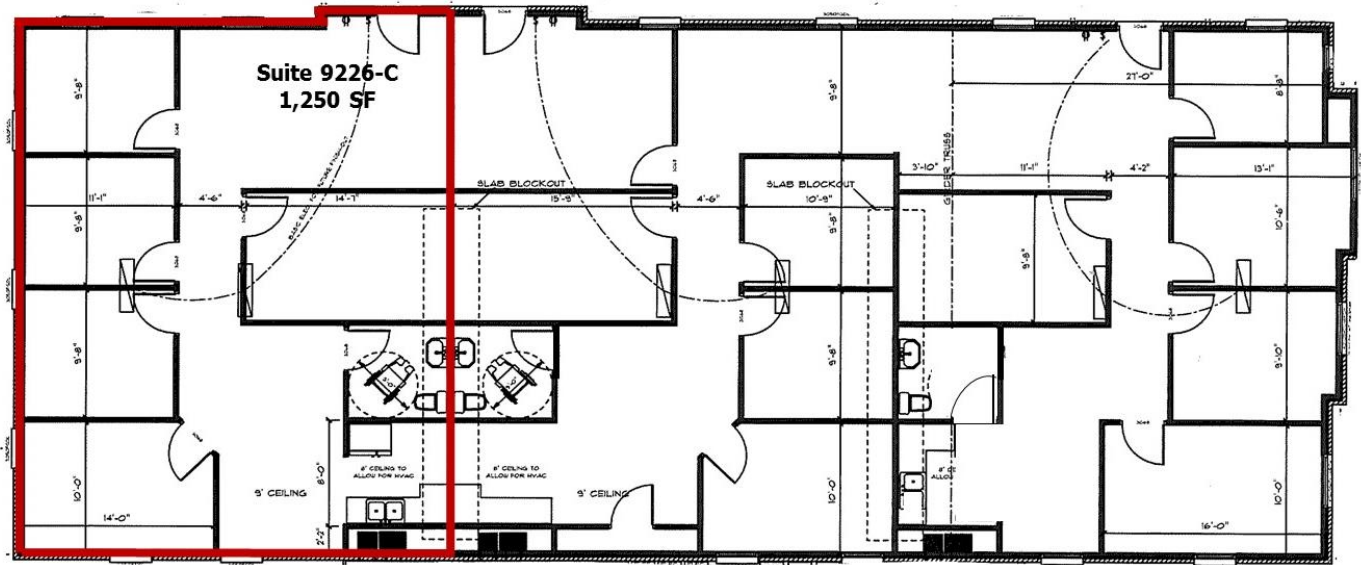
[www.priceedwards.com](http://www.priceedwards.com)



*The information contained herein has been obtained from sources deemed to be reliable; however, Price Edwards & Company does not warranty, confirm or verify any of the information contained herein or its accuracy, nor has Price Edwards & Company conducted any investigation regarding these matters. All potential tenants/purchasers must take appropriate measures to verify all of the information set forth herein.*



## Floor Plan - 9226 South Elwood



## Floor Plan - 9222 South Elwood – Available 9/1/19



**TANDA FRANCIS**  
Price Edwards & Company  
918-394.1000 Office  
918-630-9991 Cell  
tfrancis@priceedwards.com

*The information contained herein has been obtained from sources deemed to be reliable; however, Price Edwards & Company does not warranty, confirm or verify any of the information contained herein or its accuracy, nor has Price Edwards & Company conducted any investigation regarding these matters. All potential tenants/purchasers must take appropriate measures to verify all of the information set forth herein.*