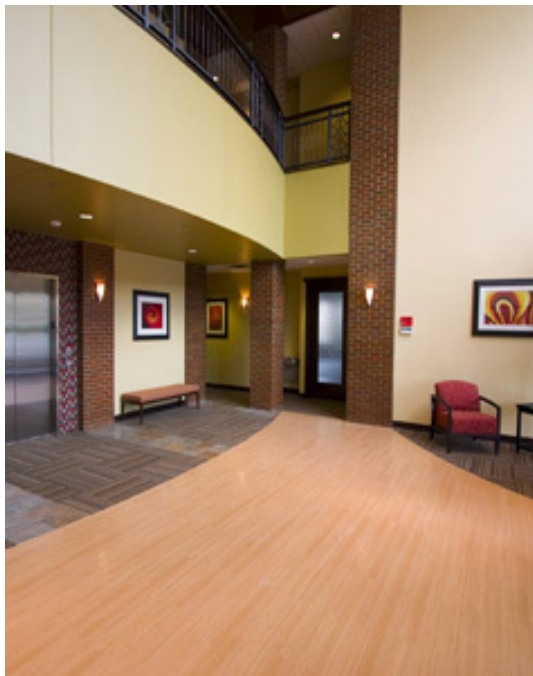


Memorial Medical Plaza

14001 McAuley Boulevard Oklahoma City, OK 73134



OFFICE SPACE NOW AVAILABLE

Available SF:	Suite 220: ±498 RSF Suite 240: ±1,238 RSF
Lease Rate:	\$22.00 rsf average Full Service
Building Size/Type:	18,336 SF Office and Medical
Building Class:	A
Year Built:	2007
Cross Streets:	Quailbrook Drive & West Memorial Road

COMMENTS

Memorial Medical Plaza is a two story office/medical building appealing to any office or medical user due to the highly traveled Memorial Corridor and proximity to Mercy Hospital. Tenant mix includes Herman Meinders Investments, Advanced Aesthetics – Plastic Surgeon, Stinnett Associates- Accountants, Oxygen Outlet, and Orban Oil and Gas.

FOR MORE INFORMATION, CONTACT

Tom Fields
tfields@priceedwards.com
405.239.1205

Craig Tucker
ctucker@priceedwards.com
405.843.7474

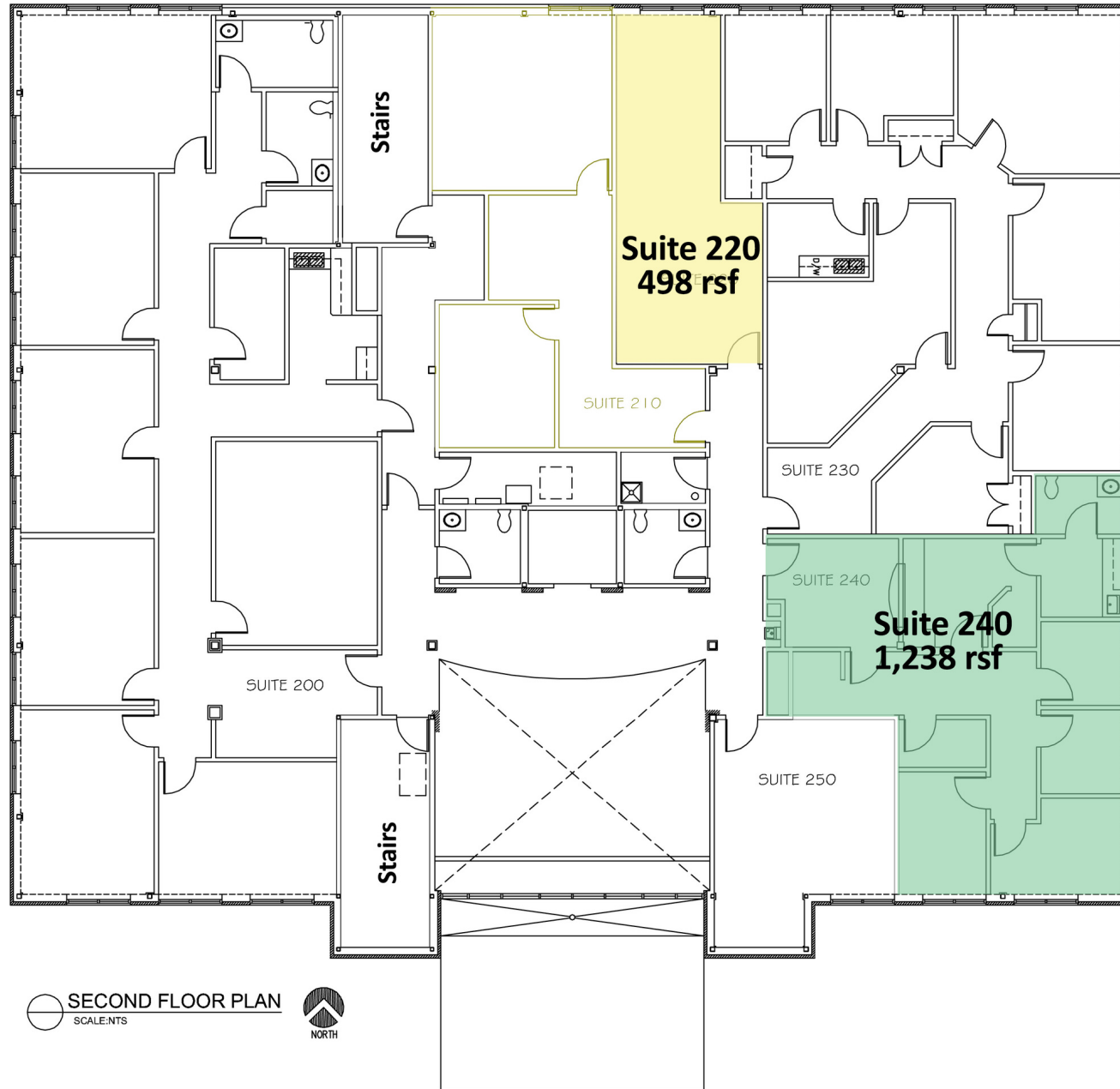
210 Park Ave, Suite 700

Oklahoma City, OK 73102

www.priceedwards.com

Memorial Medical Plaza

14001 McAuley Boulevard, Oklahoma City, OK 73134



SECOND FLOOR PLAN
SCALE: NTS

