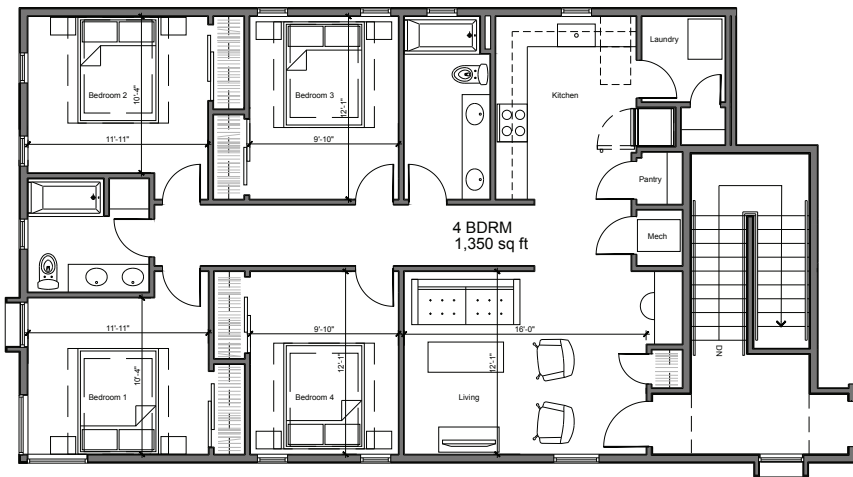


4 Bedroom • 1,360 sq ft



4 Bedroom • 1,350 sq ft



**The Seven at  
Page Woodson**  
1029 NE 6th  
Oklahoma City, OK 73117



1, 2 and 4 Bedroom Apartments Available



Contemporary.  
Convenient.  
Inspired.

Location. Location. Location.

The Seven at Page Woodson is located just TWO BLOCKS south of the OU Health Science Center, and only minutes from Downtown Oklahoma City, Midtown, Uptown, and Bricktown Entertainment District.



**For Leasing Information:**  
Sheenah Kaveh | (405) 595-3296

Professionally managed by Price Edwards & Company  
www.priceedwards.com



Located just east of Downtown OKC and south of OUHSC campus in the JFK Neighborhood



The Seven at Page Woodson  
**Floorplans**



## Move-In Special!

Sign a lease for The Seven at Page Woodson, and choose TWO of the following free gifts!

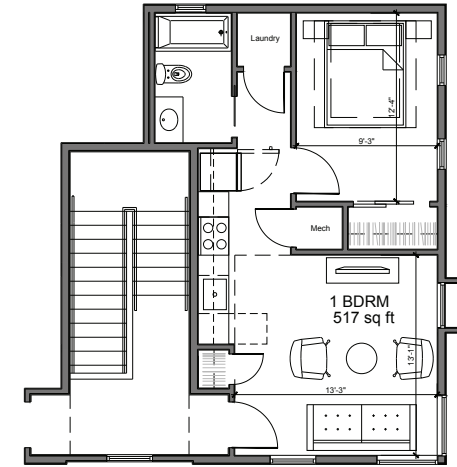
- **32" TV**
- **Tablet**
- **One Month Free Rent**
- **Bike from Schlegel Bicycles**



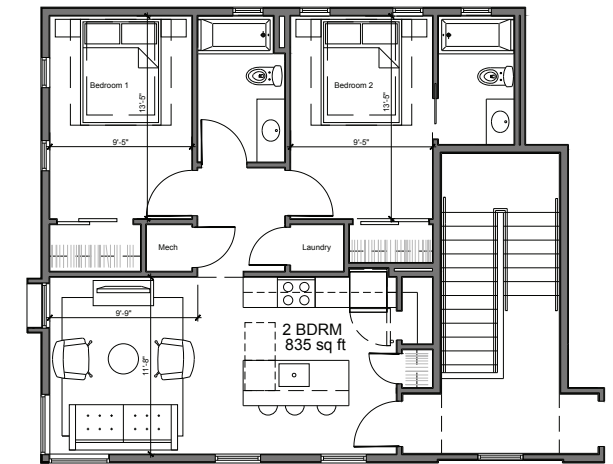
## The Seven at Page Woodson Amenities



- Bike Racks
- W/D Connections (in the unit)
- Quartz countertops (in the unit)
- Large corner windows (in the unit)
- Downtown Views
- Dog Park
- Coffee Shop
- Close proximity to OUHSC
- Shared landscaped courtyards
- Lit sidewalks
- Bikeable neighborhood
- Off-street parking
- On-street parking
- Within John W. Rex School district
- Availability of public transportation
- Carwash station



1 Bedroom • 517 sq ft



2 Bedroom • 835 sq ft



The Seven at Page Woodson features brand new construction and a location only minutes from downtown, within the John W. Rex Charter Elementary School district!



## The Seven at Page Woodson Floorplans