

SANTA FE SHOPS - NEW CONSTRUCTION

14201 N Santa Fe, Oklahoma City, OK 73013



RETAIL/OFFICE SPACE NOW AVAILABLE

Available SF:	1,030 - 21,600 SF
Lease Rate:	Negotiable
Lot Size:	1.81 Acres
Building Size:	24,000 SF
Year Built:	2017
Sub Market:	North Oklahoma City
Cross Streets:	NW 142nd & N Santa Fe Ave

Santa Fe Shops is a well-positioned neighborhood center offering easy access and convenience to the high-income population surrounding this site and easy access to the John Kilpatrick Turnpike and Broadway Extension.

New Construction – 24,000 SF mixed use center located on N Santa Fe Ave just north of Memorial Road

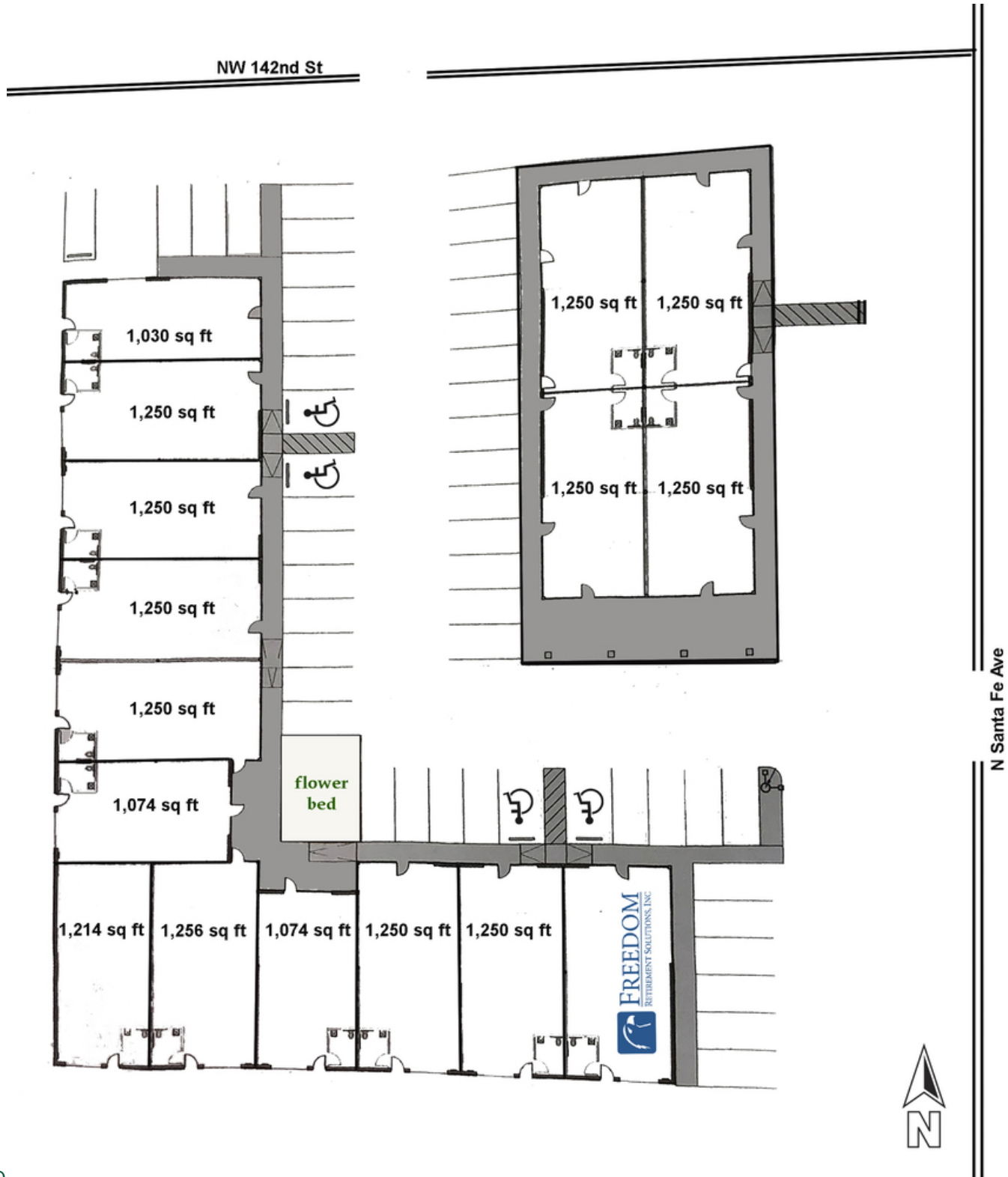
112018

GEORGE WILLIAMS, CCIM

Retail Investment Specialist
gwilliams@pricedwards.com
405.239.1270
210 Park Ave, Suite 700, Oklahoma City, OK 73102
pricedwards.com

SANTA FE SHOPS

14201 N Santa Fe, Oklahoma City, OK 73013



GEORGE WILLIAMS, CCIM

Retail Investment Specialist

gwilliams@priceedwards.com

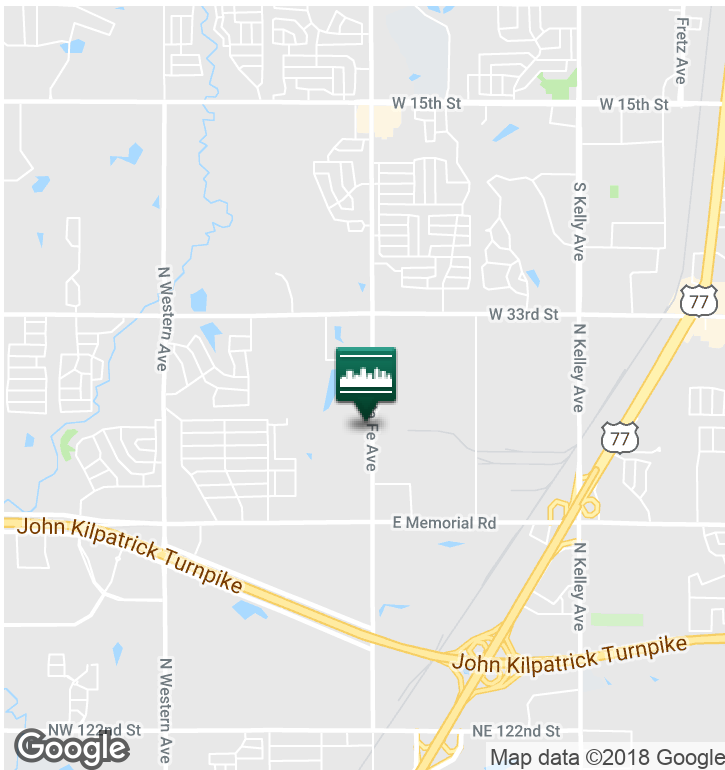
405.239.1270

210 Park Ave, Suite 700, Oklahoma City, OK 73102

priceedwards.com

SANTA FE SHOPS - NEW CONSTRUCTION

14201 N Santa Fe, Oklahoma City, OK 73013



DEMOGRAPHICS (per 2010 Census; 5 Miles Radius)

Total Population	162,354
Population Density	162,354
Median Age	33.0
Median Age (Male)	31.3
Median Age (Female)	34.3
Total Households	65,803
# of Persons Per HH	2.5
Average HH Income	\$72,805
Average House Value	\$187,837

TRAFFIC COUNTS (per ACOG)

N Santa Fe	north	21,216
N Santa Fe	south	20,095
E Memorial	east	17,631
W Memorial	west	19,871
W 33rd St	east	19,441
NW 150th	west	19,056

GEORGE WILLIAMS, CCIM

Retail Investment Specialist
 gwilliams@pricedwards.com
 405.239.1270
 210 Park Ave, Suite 700, Oklahoma City, OK 73102
 pricedwards.com