

14101 & 14201 Wireless Way, Oklahoma City, OK 73134



OFFICE SPACE FOR LEASE



- Built in 2001 as the corporate headquarters for a telecom company
- Highest quality materials and construction
- Large floorplates ranging from 16,000 SF to 22,000 SF
- State of the art building systems
- Excellent accessibility via the Lake Hefner Parkway, Memorial Road and the Kilpatrick Turnpike
- Proximity to restaurants and shopping
- Corporate office park environment
- Attractive architecture/design
- Balconies overlooking the park's lake
- 4.81 per 1,000 SF parking ratio (free surface parking)
- Back-up generator provides capacity to run both buildings indefinitely

	Building A	Building B	Building C	Building D
1st Floor	12,518 SF	6,582 SF	5,700 SF	2,644 SF
2nd Floor	Leased	Leased		
3rd Floor	Leased	Leased		

*Building C is set up as a conference center and Building D a restaurant.



Craig Tucker

405.239.1202

ctucker@pricedwards.com

Tom Fields

405.239.1205

tfields@pricedwards.com

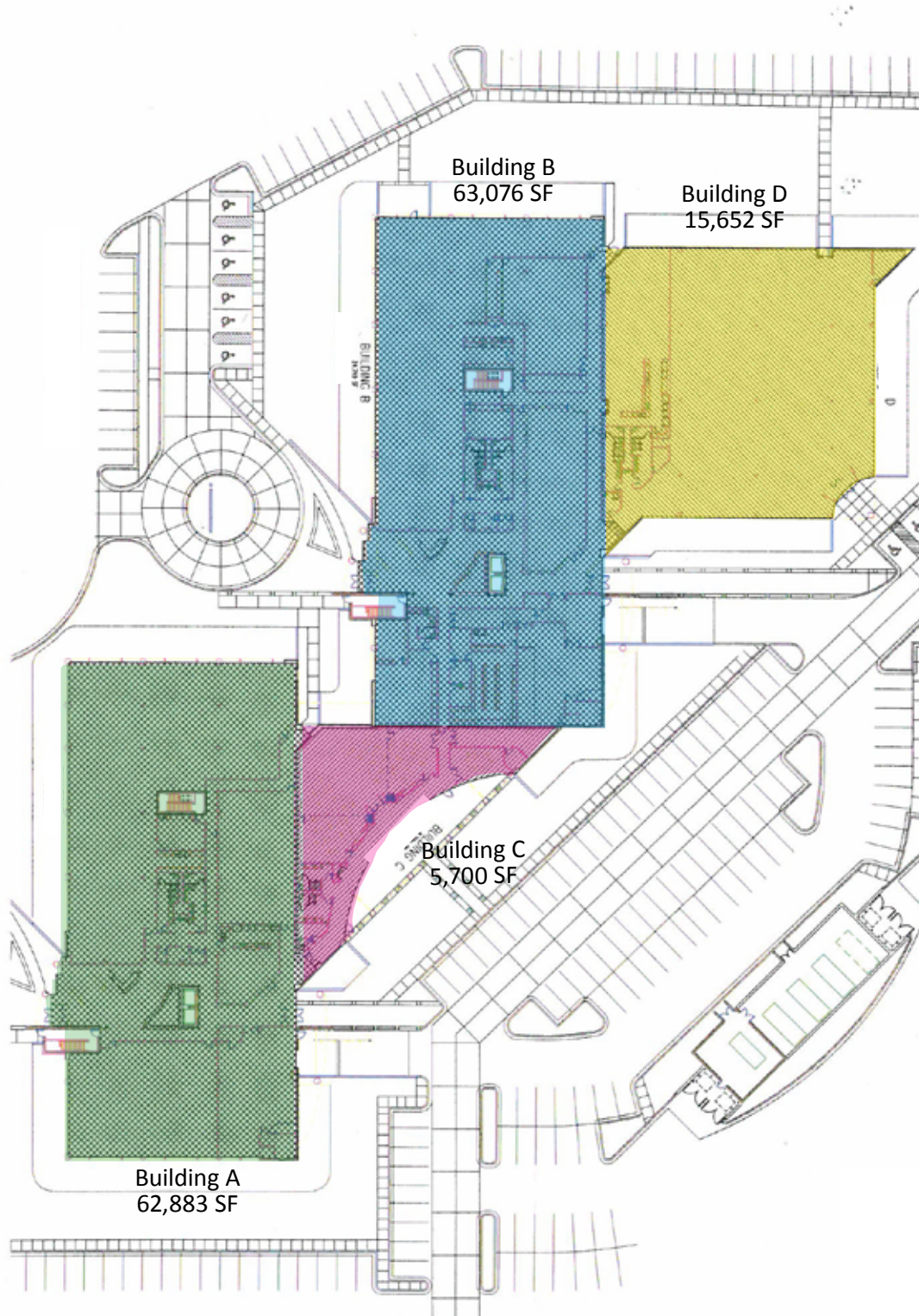
Price Edwards & Company | 210 Park Avenue, Suite 700, Oklahoma City, OK 73102 | Phone (405) 843-7474 | Fax (405) 236-1849 | www.pricedwards.com

The information herein has been obtained from sources believed reliable. While we do not doubt its accuracy, we have not verified it and make no guarantee, warranty, or representation about it. You and your legal and technical advisors should conduct a careful, independent investigation of the property to determine to your satisfaction to the suitability of the property for your needs.

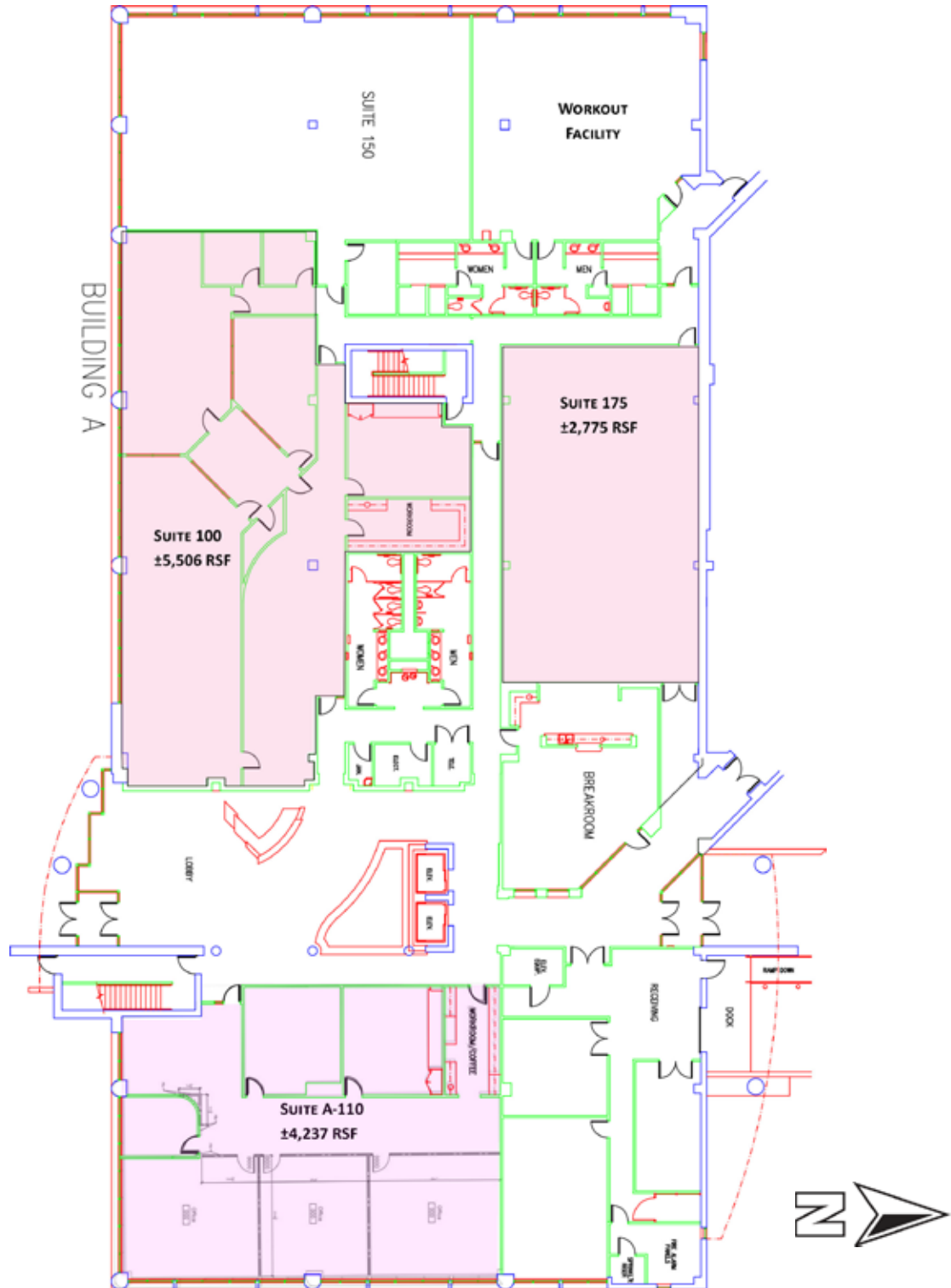
14101 & 14201 Wireless Way, Oklahoma City, OK 73134



OFFICE SPACE FOR LEASE

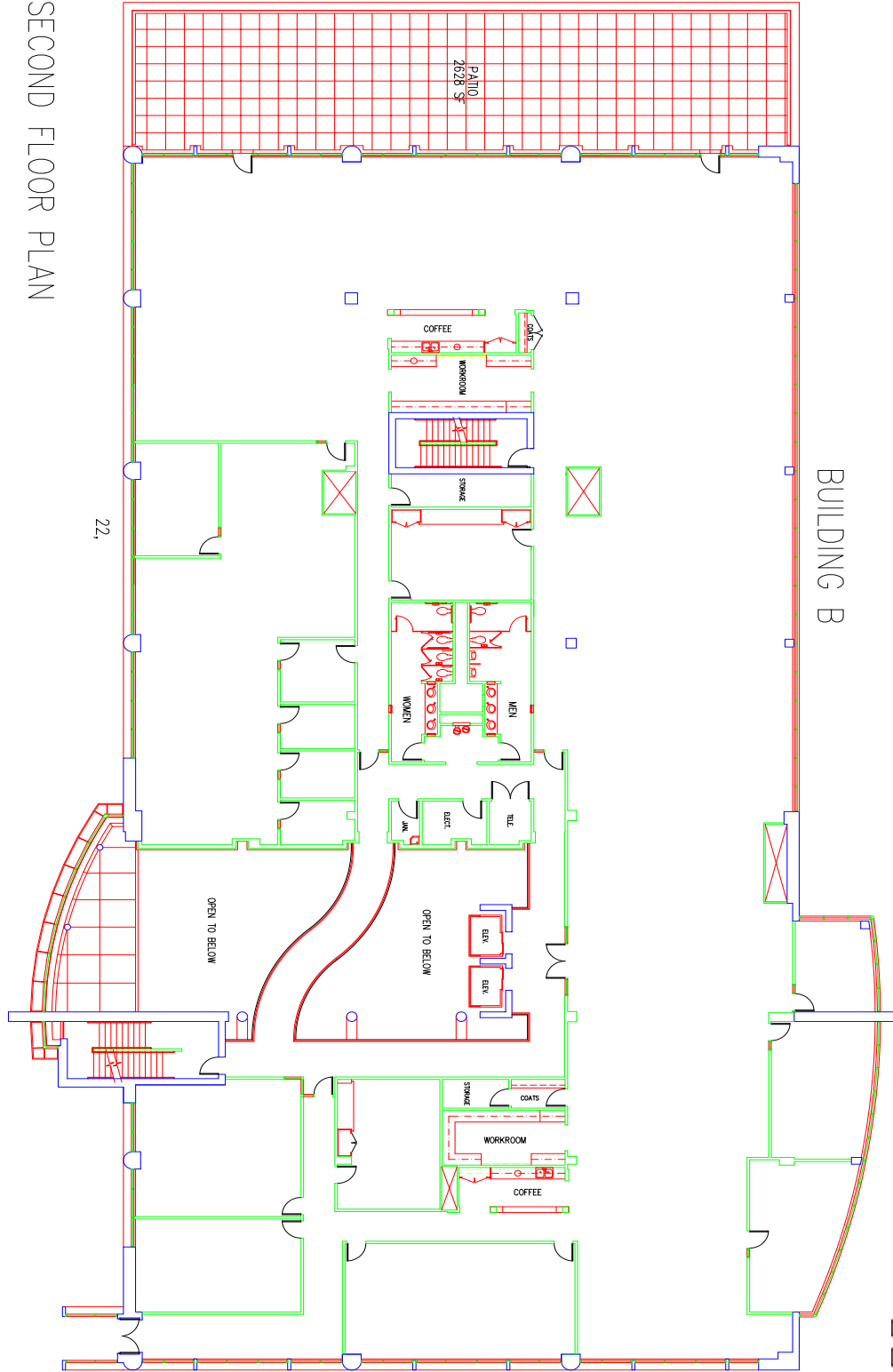


Building A - First Floor



Building B - Second Floor
21,885 SF
(does not include patio)

SECOND FLOOR PLAN



BUILDING B

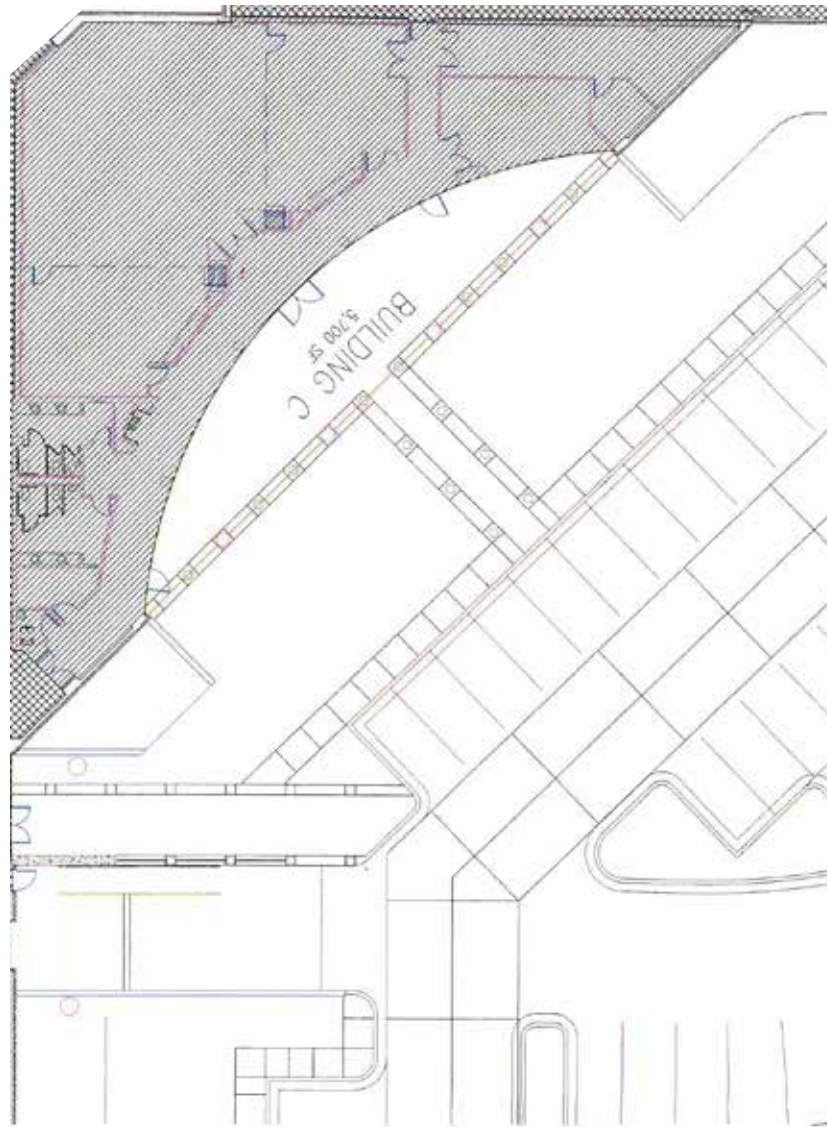
22.

14101 & 14201 Wireless Way, Oklahoma City, OK 73134



OFFICE SPACE FOR LEASE

Building C
5,700 SF



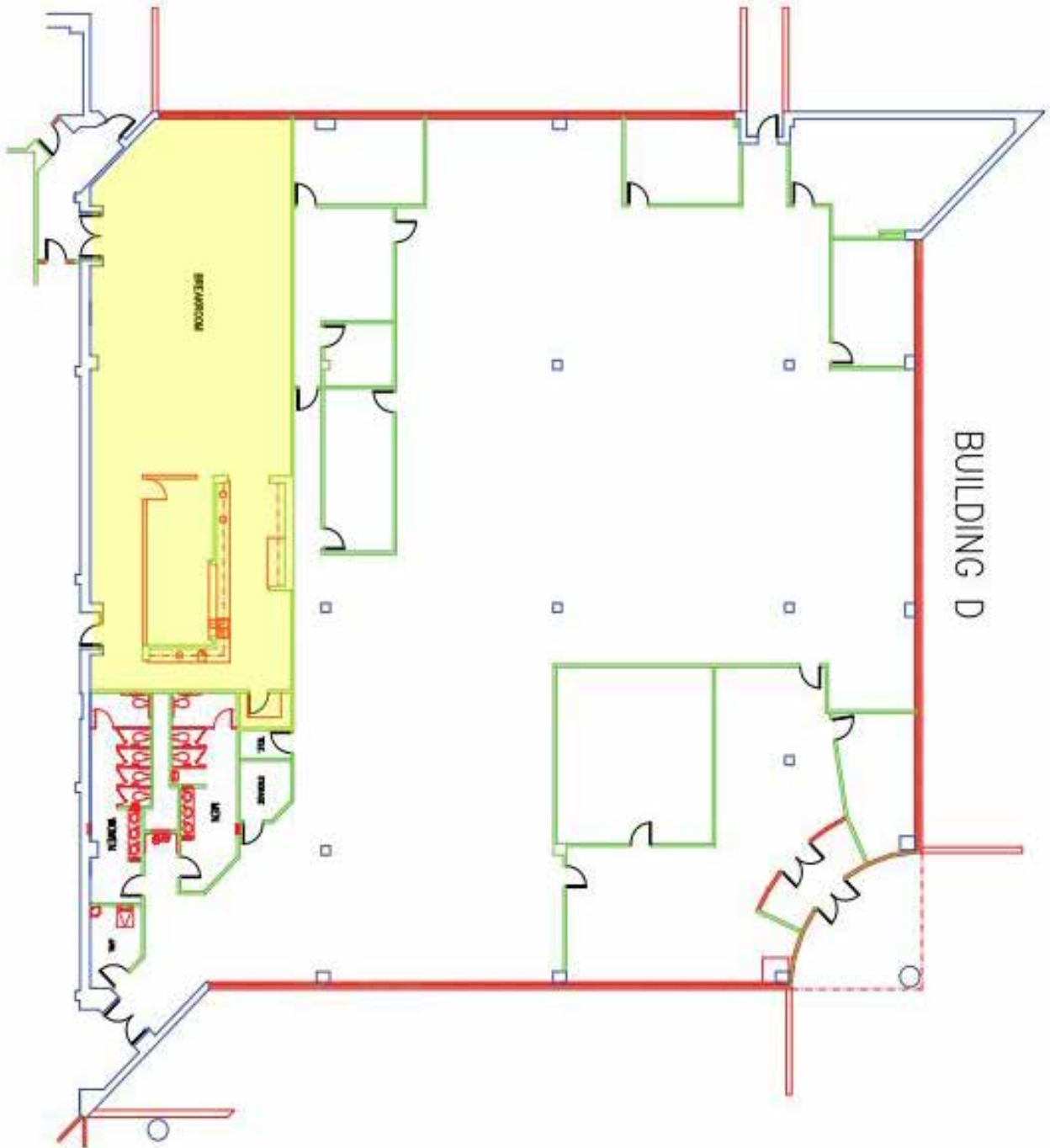
14101 & 14201 Wireless Way, Oklahoma City, OK 73134



OFFICE SPACE FOR LEASE

Building D
± 2,644 SF

FIRST FLOOR PLAN



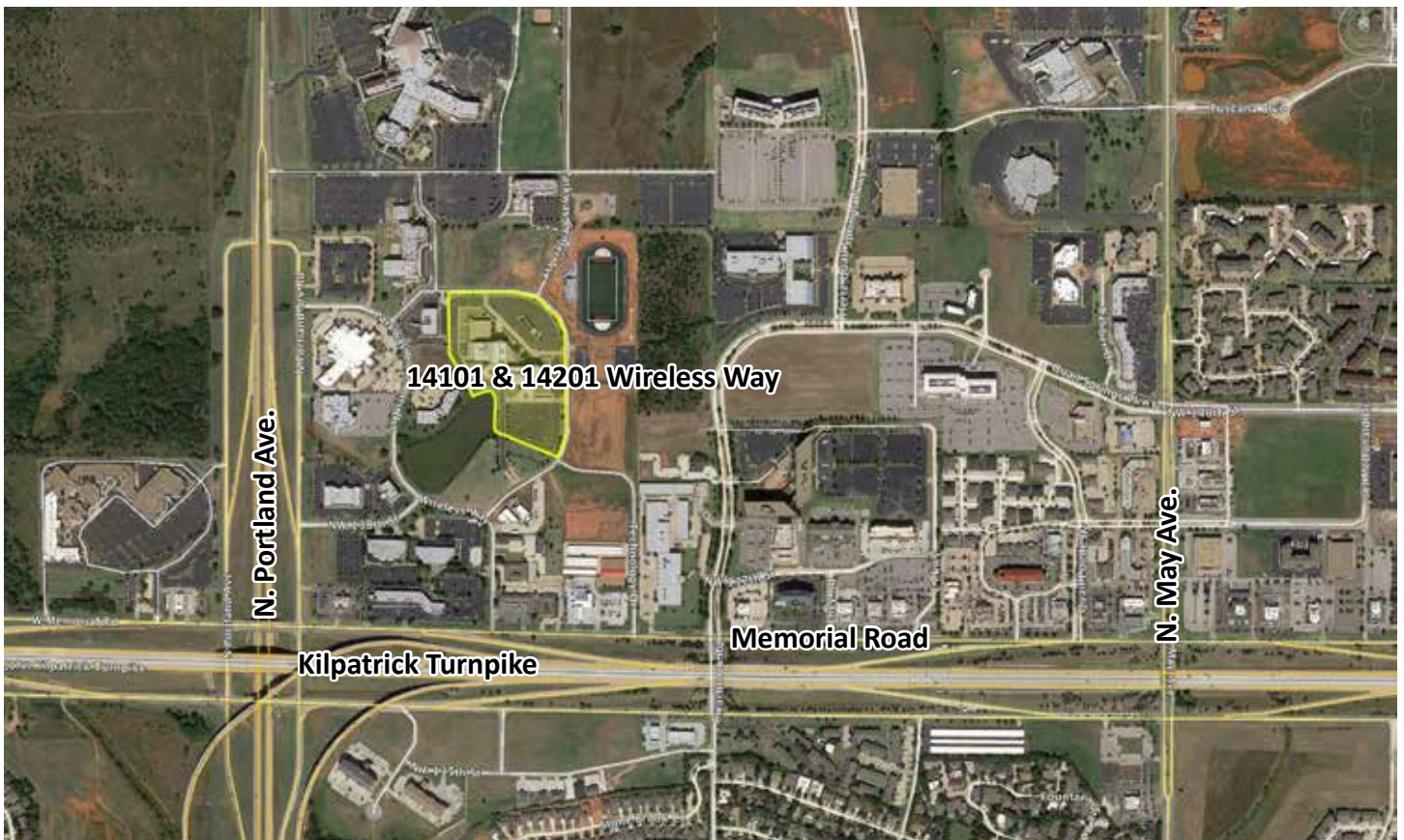
BUILDING D



14101 & 14201 Wireless Way, Oklahoma City, OK 73134



OFFICE SPACE FOR LEASE



Price Edwards & Company | 210 Park Avenue, Suite 700, Oklahoma City, OK 73102 | Phone (405) 843-7474 | Fax (405) 236-1849 | www.pricedwards.com

The information herein has been obtained from sources believed reliable. While we do not doubt its accuracy, we have not verified it and make no guarantee, warranty, or representation about it. You and your legal and technical advisors should conduct a careful, independent investigation of the property to determine to your satisfaction to the suitability of the property for your needs.