



#### OFFICE SPACE NOW AVAILABLE

|                 |                    |
|-----------------|--------------------|
| Available SF:   | 2,045 SF           |
| Lease Rate:     | \$13.00 SF/yr (MG) |
| Building Size:  | 3,204 SF           |
| Building Class: | B                  |
| Year Built:     | 1980               |

#### PROPERTY OVERVIEW

Suite B: Comprised of 4 private offices, 1 which has a private bathroom and 3 with access to the outside patio with their own private patio door. This suite also includes a reception area, conference room, and file/workroom.

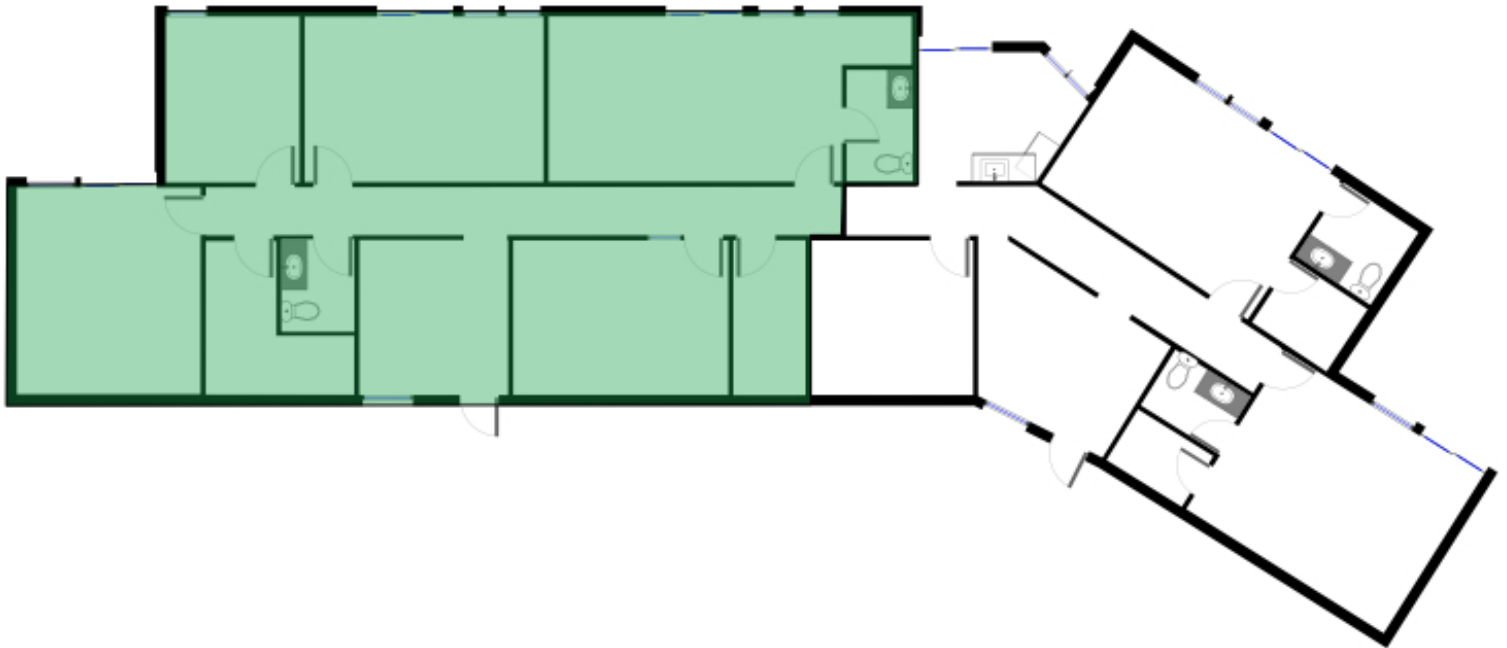
#### LOCATION OVERVIEW

The building is located along the west side of North Eastern Avenue, just south of East Memorial Road within a half-mile of the John Kilpatrick Turnpike.

**TRE DUPUY**  
405.843.7474  
tdupuy@pricedwards.com  
pricedwards.com

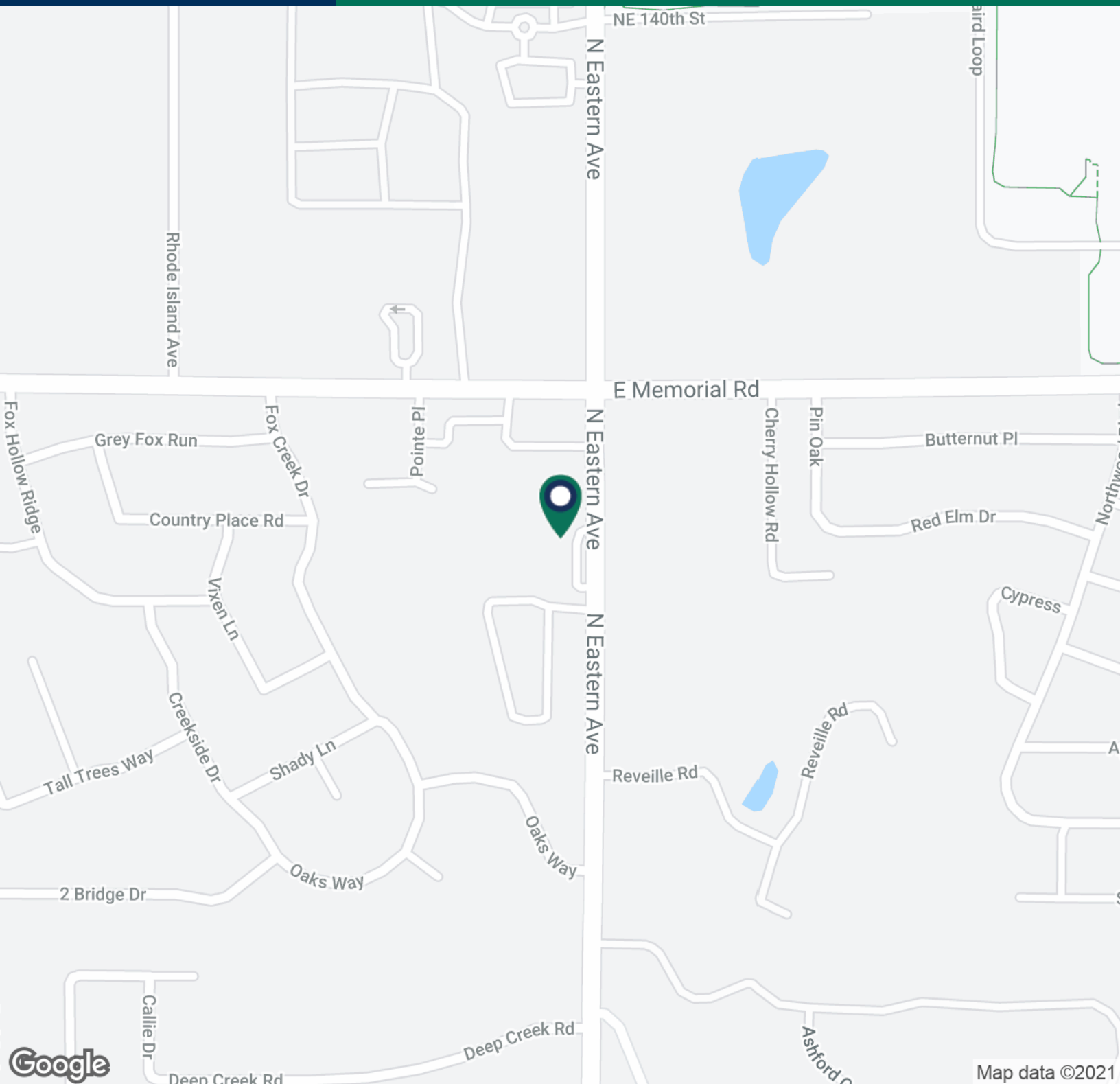
**IAN SELF**  
405.239.1271  
iself@pricedwards.com  
pricedwards.com

SUITE B: 2,045 Square Feet



**TRE DUPUY**  
405.843.7474  
tdupuy@priceedwards.com  
priceedwards.com

**IAN SELF**  
405.239.1271  
iself@priceedwards.com  
priceedwards.com



**TRE DUPUY**  
405.843.7474  
tdupuy@priceedwards.com  
priceedwards.com

**IAN SELF**  
405.239.1271  
iself@priceedwards.com  
priceedwards.com