



PROPERTY SUMMARY

Available SF: 21,976 rsf

Lease Rate: Negotiable

Year Built: 2008

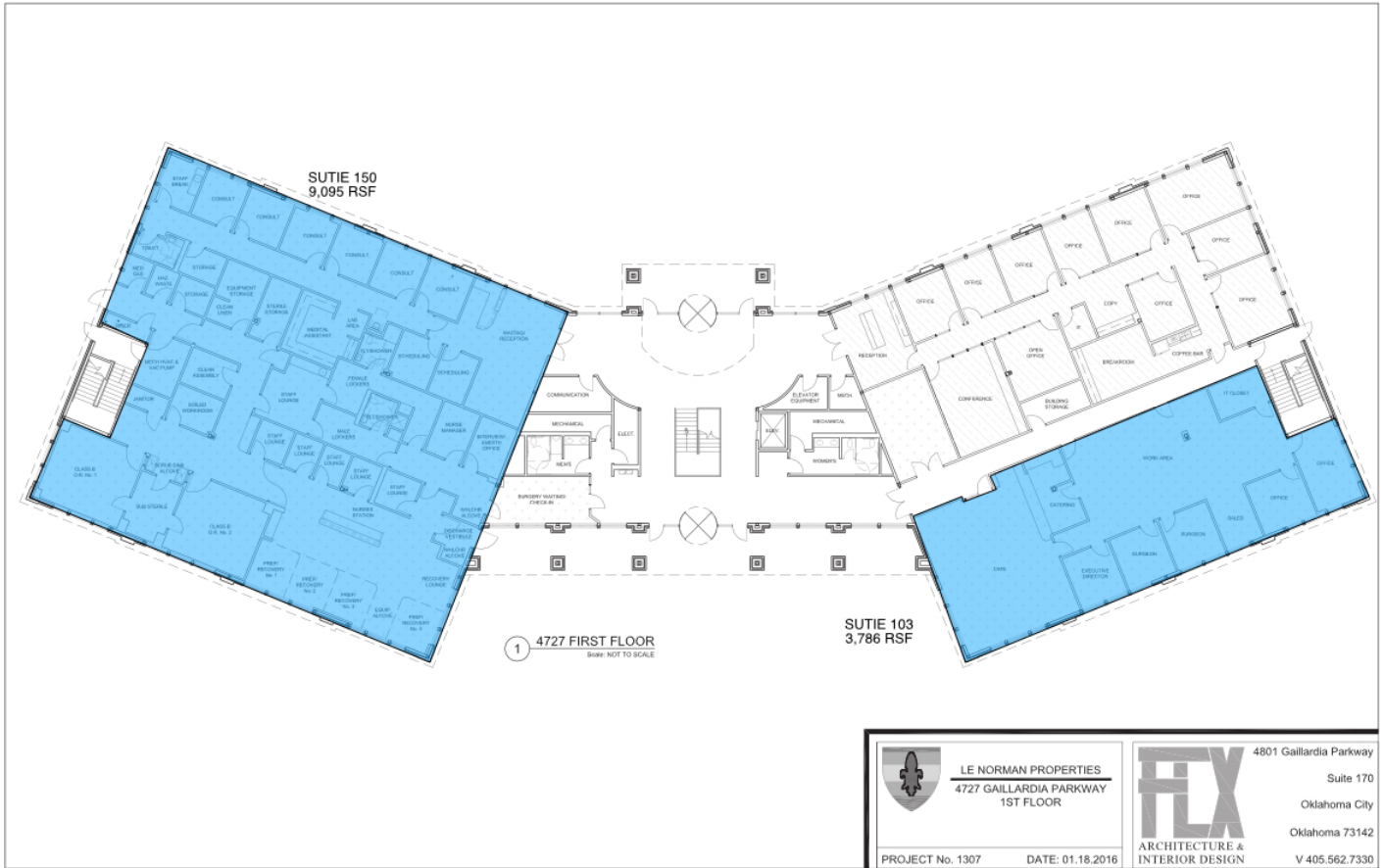
Building Size: 37,624 SF


PROPERTY OVERVIEW

The 4727 Gaillardia building is located in the Gaillardia Office Park, the most prestigious office development in Oklahoma City. 4727 Gaillardia is located less than 1 mile from several restaurants, hotels, and is easily accessible from Memorial Road, as well as the John Kilpatrick Turnpike. The building overlooks the Gaillardia Country Club, a 7,724 yard par 72, open links style golf course, anchored by a 55,000 square foot clubhouse recognized as one of the top 100 clubhouses in the world.

TRE DUPUY
405.843.7474
tdupuy@priceedwards.com
priceedwards.com

IAN SELF
405.239.1271
iself@priceedwards.com
priceedwards.com



 <p>LE NORMAN PROPERTIES 4727 GAILLARDIA PARKWAY 1ST FLOOR</p>	<p>4801 Gaillardia Parkway Suite 170 Oklahoma City Oklahoma 73142 V 405.562.7330</p>
<p>PROJECT No. 1307</p>	<p>DATE: 01.18.2016</p>

TRE DUPUY
405.843.7474
tdupuy@pricedwards.com
pricedwards.com

IAN SELF
405.239.1271
iself@pricedwards.com
pricedwards.com

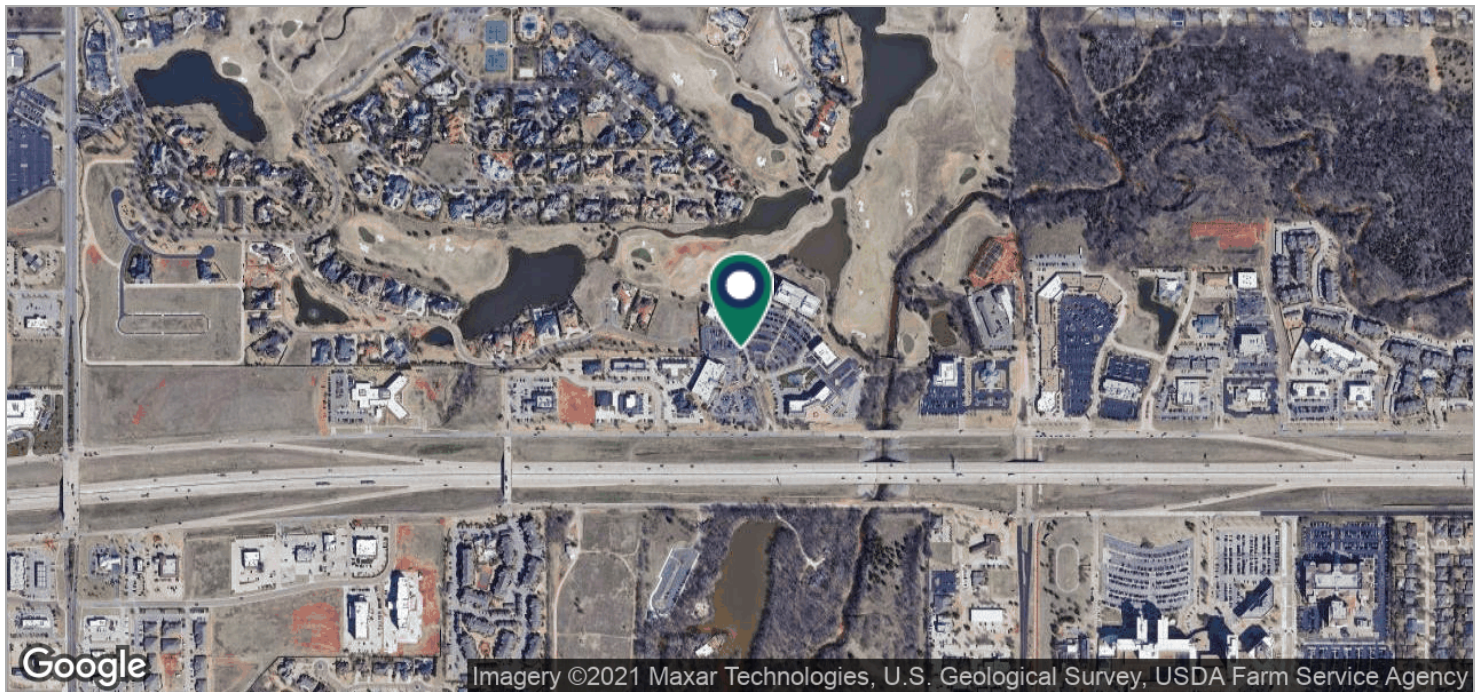
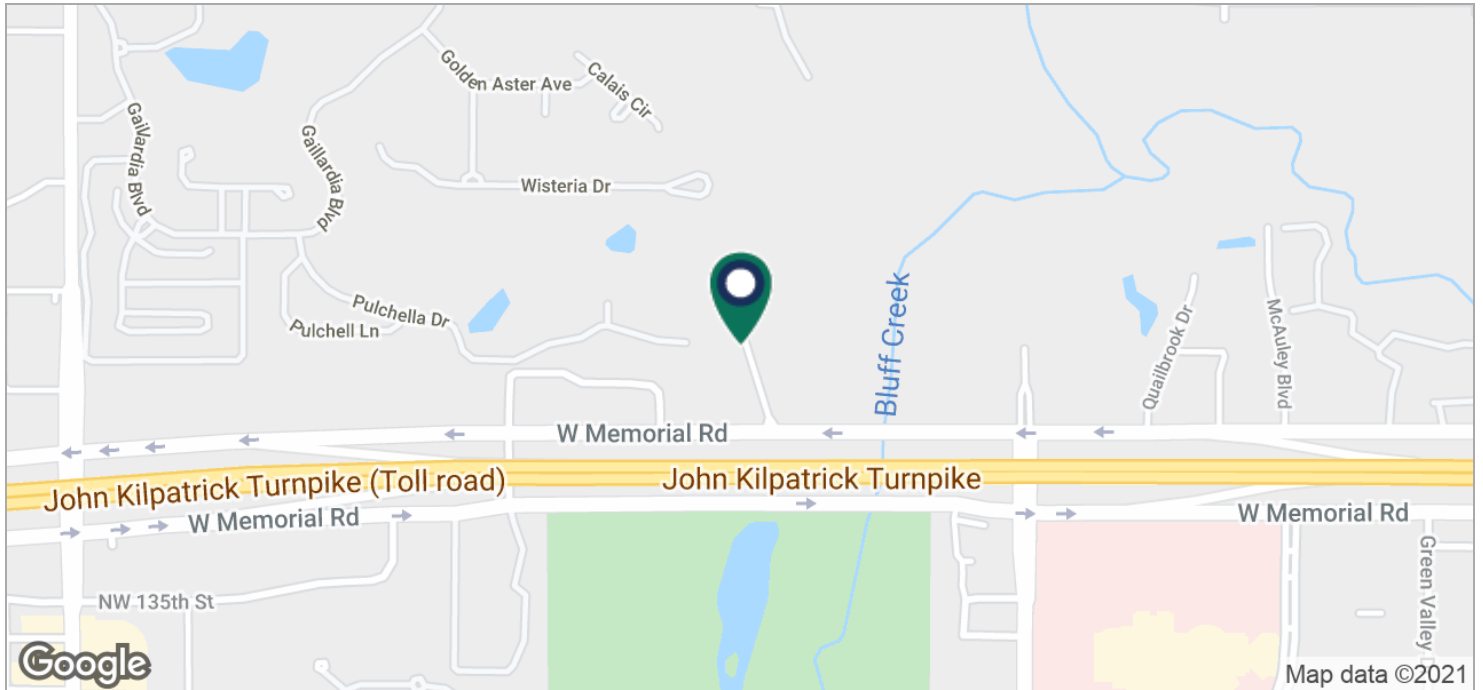


TRE DUPUY
405.843.7474
tdupuy@priceedwards.com
priceedwards.com

IAN SELF
405.239.1271
iself@priceedwards.com
priceedwards.com

4727 Gaillardia

4727 Gaillardia Parkway, Oklahoma City, OK 73142



TRE DUPUY
405.843.7474
tdupuy@pricedwards.com
pricedwards.com

IAN SELF
405.239.1271
iself@pricedwards.com
pricedwards.com