

## HAFER PLAZA

1008 S. BRYANT, EDMOND, OK 73034



### PROPERTY DESCRIPTION

- Windowed offices
- Work out facility with shower (free)
- Onsite ownership
- Common break area
- Upscale restrooms
- Full service lease includes normal utilities, maintenance and janitorial
- Internet service included for an additional \$50 / month
- Free conference room

### LOCATION DESCRIPTION

This beautiful Class A office building is situated in the heart of east Edmond on Bryant south of 9th Street. The building is adjacent to Hafer Park Trails and the Pelican Bay Aquatic Center. Convenient to numerous restaurants and shopping.

### OFFERING SUMMARY

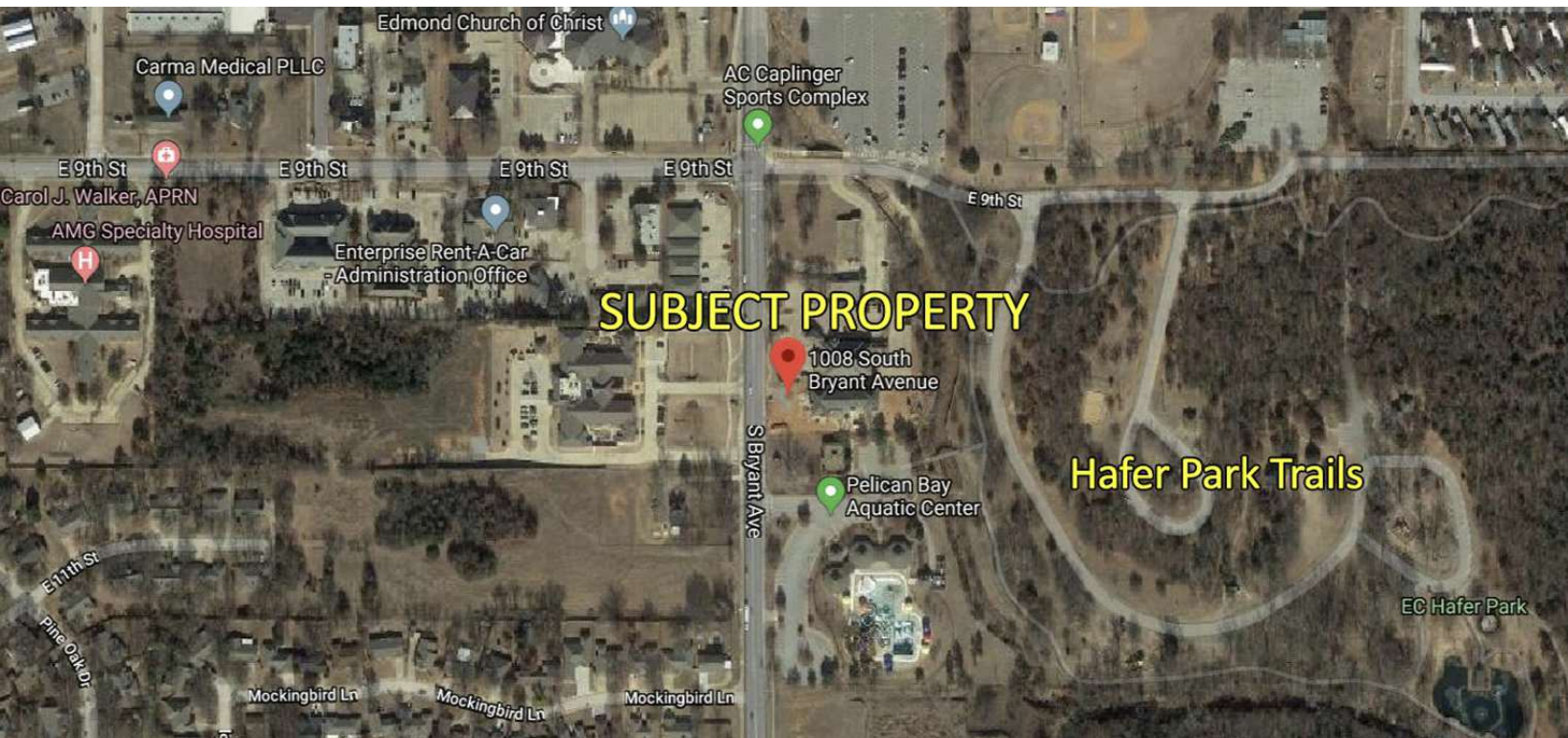
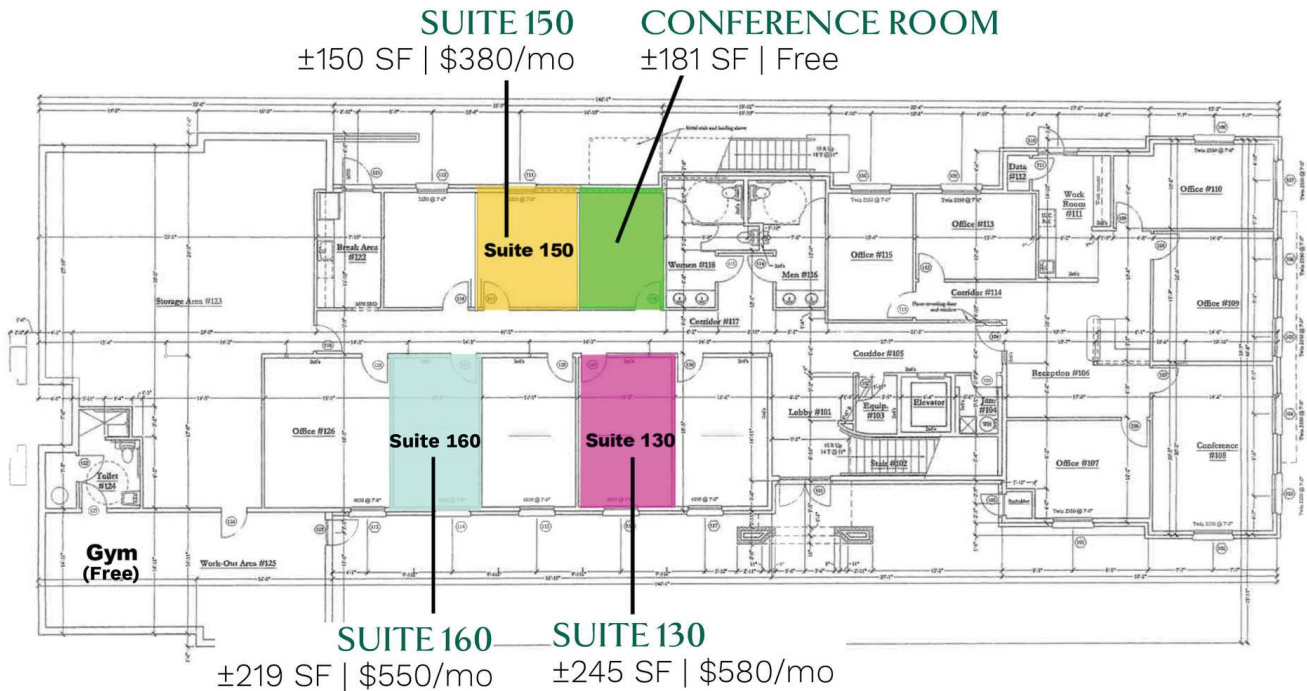
|                        |                           |
|------------------------|---------------------------|
| <b>Suite 130:</b>      | ±245 RSF<br>\$610 / month |
| <b>Suite 150:</b>      | ±150 RSF<br>\$380 / month |
| <b>Suite 160:</b>      | ±219 RSF<br>\$550 / month |
| <b>Building Class:</b> | A                         |
| <b>Year Built:</b>     | 2018                      |

#### TOM FIELDS

tfields@priceedwards.com  
O: 405.239.1205

## HAFER PLAZA

1008 S. BRYANT, EDMOND, OK 73034



**TOM FIELDS**

tfields@priceedwards.com

O: 405.239.1205