

Industrial Property For Lease

113 NE 36th St Oklahoma City, OK 73105



113 NE 36th St

Oklahoma City, Oklahoma

ANDREW HOLDER
Industrial Specialist
580.430.5124
aholder@pricedwards.com
pricedwards.com

DANNY RIVERA
Industrial Specialist
405.408.5449
drivera@pricedwards.com
pricedwards.com



OFFERING SUMMARY

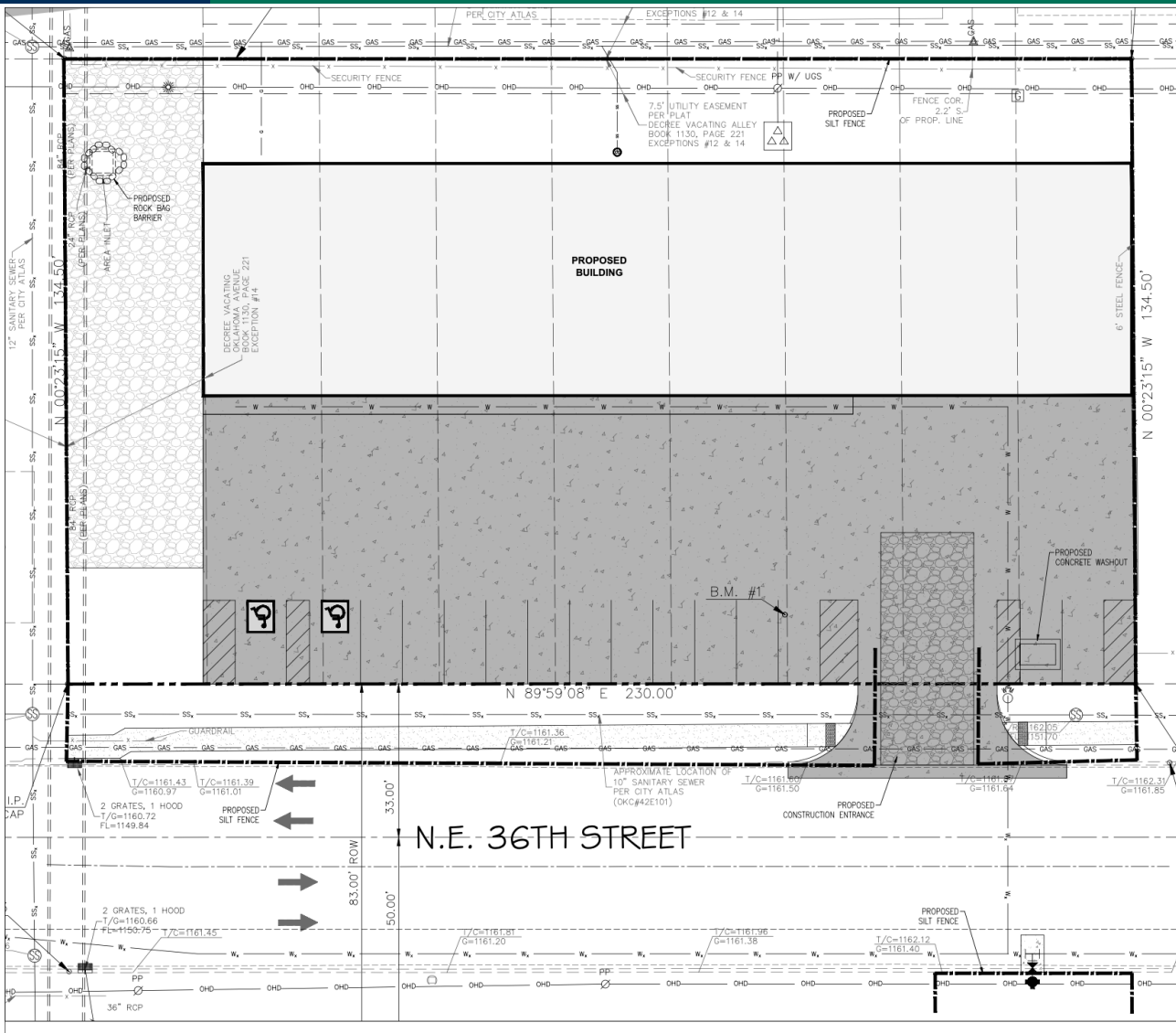
Lease Rate:	\$10.00 SF/yr (NNN)
Building Size:	10,000 SF
Available SF:	10,000 SF
Number of Units:	1
Year Built:	2022

PROPERTY OVERVIEW

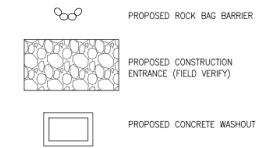
- Brand New Construction in a Prime Location.
- 4 bay doors w/ 14 ft Height
- 3 Phase Power 208V w/ 200 AMPs
- 3/4 Acre
- 11,600 SF of paved surface
- Proposed 1000 SF office, Change permissible prior to completion

ANDREW HOLDER
580.430.5124
aholder@priceedwards.com
priceedwards.com

DANNY RIVERA
405.408.5449
drivera@priceedwards.com
priceedwards.com



THIS SHEET IS PART OF THE APPROVED PLANS, CITY OF OKLAHOMA CITY DEVELOPMENT CENTER



113 NE 36th STREET
OKLAHOMA CITY, OKLAHOMA

Project Number: Client Number:
N/A



BWR DESIGN GROUP
BWR DESIGN GROUP, LLC
PO BOX 31732
EDMOND, OK 73003
405-761-5517
CA 7227, EXP. 06/30/2022
Issue Date: 02/16/2022

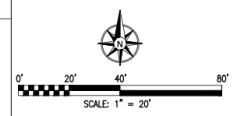
Purpose - Issue:
FINAL

Revisions:

No.	Date	Revision

Sheet Title:
EROSION CONTROL PLAN

Sheet Number:
C5.0

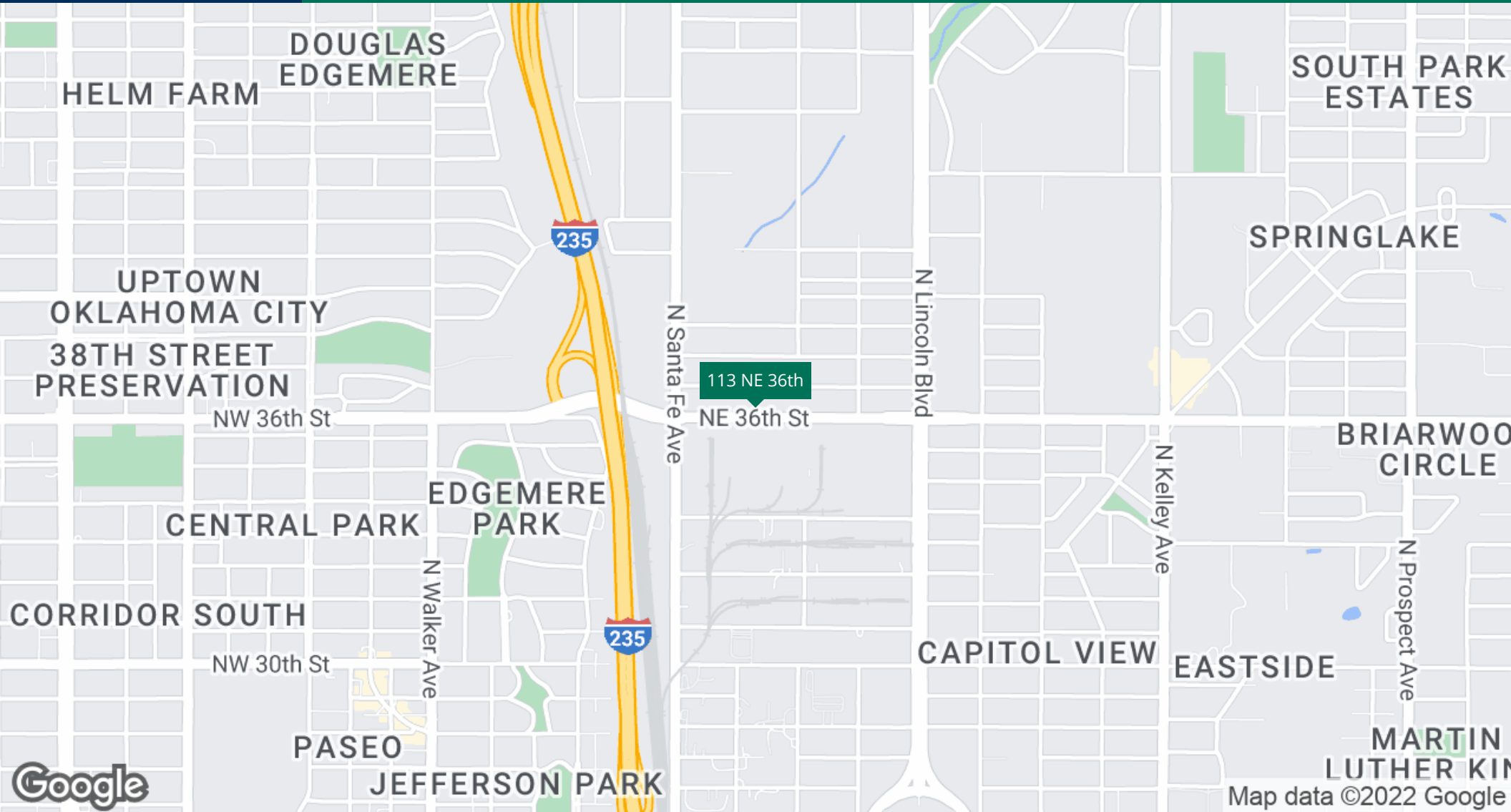


UTILITY WARNING:
THE UNDERGROUND UTILITIES SHOWN HAVE BEEN LOCATED FROM RECORD DOCUMENTS OR FIELD LOCATIONS BY THE OPERATOR. THE SURVEYOR MAKES NO GUARANTEE THAT THE UNDERGROUND UTILITIES SHOWN COMPRISE ALL SUCH UTILITIES IN THE AREA EITHER IN SERVICE OR ABANDONED. THE SURVEYOR FURTHER DOES NOT WARRANT THAT THE UNDERGROUND UTILITIES SHOWN ARE IN THE EXACT LOCATION INDICATED ALTHOUGH THE SURVEYOR DOES CERTIFY THAT THEY ARE LOCATED AS ACCURATELY AS POSSIBLE FROM THE INFORMATION AVAILABLE. THE SURVEYOR HAS NOT PHYSICALLY LOCATED THE UNDERGROUND UTILITIES.

UTILITY ELEVATIONS AND SIZES MAY HAVE BEEN MEASURED UNDER ADVERSE FIELD CONDITIONS. UPON EXPOSING THE UTILITY, ELEVATIONS AND THE SIZES SHOULD BE VERIFIED BY THE CONTRACTOR PRIOR TO CONSTRUCTION. CONTRACTOR SHOULD VERIFY SPOTIAL ELEVATIONS USING THE BENCHMARK PROVIDED BY THE SURVEYOR OR ENGINEER, AND DISCREPANCIES SHOULD BE IMMEDIATELY BROUGHT TO THE ENGINEER'S AND SURVEYOR'S ATTENTION.

ANDREW HOLDER
580.430.5124
aholder@priceedwards.com
priceedwards.com

DANNY RIVERA
405.408.5449
drivera@priceedwards.com
priceedwards.com



ANDREW HOLDER
580.430.5124
aholder@pricedwards.com
pricedwards.com

DANNY RIVERA
405.408.5449
drivera@pricedwards.com
pricedwards.com