

1220 N ROBINSON AVENUE

OKLAHOMA CITY, OK 73103



PROPERTY DESCRIPTION

Approximately 12 foot ceilings throughout the building.

New roof Portico entryways

Half mile to I-235

Less than a mile to the courthouse

One mile to Paycom Center

PROPERTY HIGHLIGHTS

- Two windowed private offices
- Large reception / bull pen
- Five onsite parking adjacent to the building
- Access to workout facility

OFFERING SUMMARY

Available SF:	±784 RSF
Lease Rate:	\$1,078 / month with \$0.50 / SF annual increases
Lease Type:	Full Service with landlord paying utilities and janitorial
Building Size:	14,980 SF
Market:	Midtown

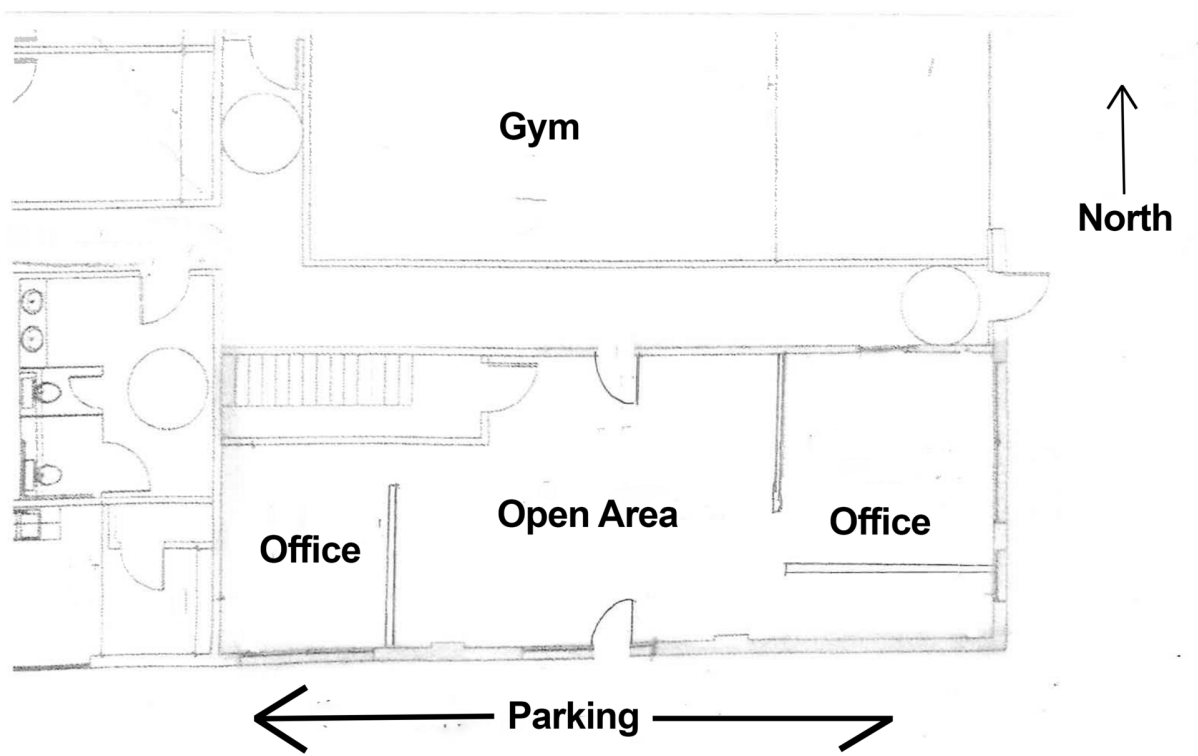
TOM FIELDS

tfields@priceedwards.com

O: 405.239.1205

1220 N ROBINSON AVENUE

OKLAHOMA CITY, OK 73103



TOM FIELDS

tfields@priceedwards.com

O: 405.239.1205