



## PROPERTY HIGHLIGHTS

<b>Total Building SF:</b>	16,000 SF
	10,000SF
<b>Front Building</b>	6,000 SF
<b>Back Building</b>	
<b>Lease Rate:</b>	\$8,000 per month (NNN)
<b>Annual Taxes:</b>	\$7,708.00
<b>Lot Size:</b>	1.7 Acres
<b>Additional Info:</b>	Fenced Yard Graveled

## LOCATION OVERVIEW:

Located directly off SE 25th Street just west of Interstate 35 providing excellent access to the metropolitan area.

## PROPERTY OVERVIEW

Main Building: 10,000 square feet - Size: 40' x 250'  
Office: 1,960 SF  
Tech Area: 1,000 SF

Office area contains 5 offices, conference/training room, restrooms, break areas

Shop: 3-14' overhead doors; 14-15' ceiling height; heavy electrical; exhaust fans; 2 -2-ton cranes and craneway; shop restrooms and locker area; "tech room".

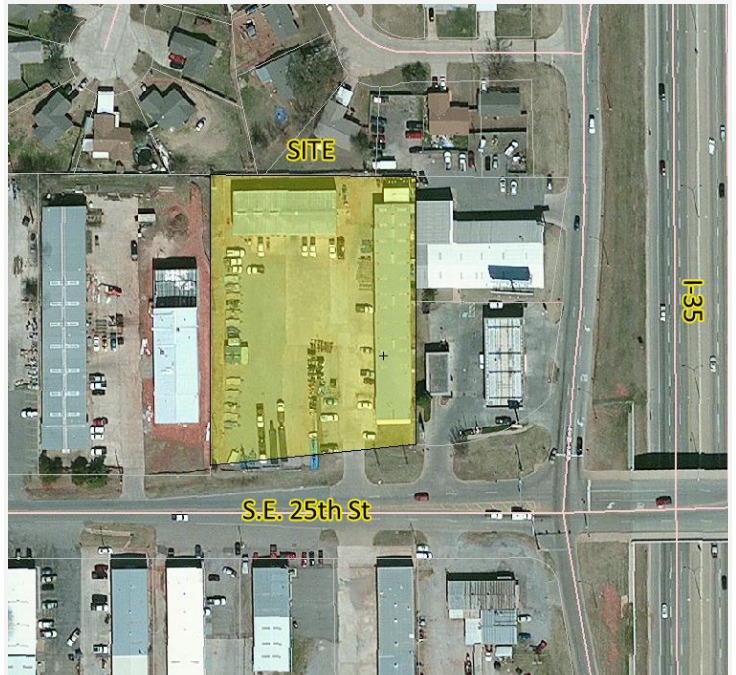
**MARK PATTON**  
405.843.7474  
mpatton@priceedwards.com  
priceedwards.com

**CODY BEAT**  
405.239.1235  
cbeat@priceedwards.com  
priceedwards.com



# Industrial Property for Lease

1333 SE 25th Street, Oklahoma City, OK 73129



**MARK PATTON**  
405.843.7474  
mpatton@priceedwards.com  
priceedwards.com

**CODY BEAT**  
405.239.1235  
cbeat@priceedwards.com  
priceedwards.com