



## OFFICE SPACE NOW AVAILABLE

Available SF:	1,159 - 2,045 SF
Lease Rate:	\$13.00 SF/yr (MG)
Building Size:	3,204 SF
Building Class:	B
Year Built:	1980

## PROPERTY OVERVIEW

Suite A: Comprised of 2 large private offices each with its own private restroom and 1 which has access to the outside patio with a private patio door. The suite also includes a break room, reception area, and file/workroom.

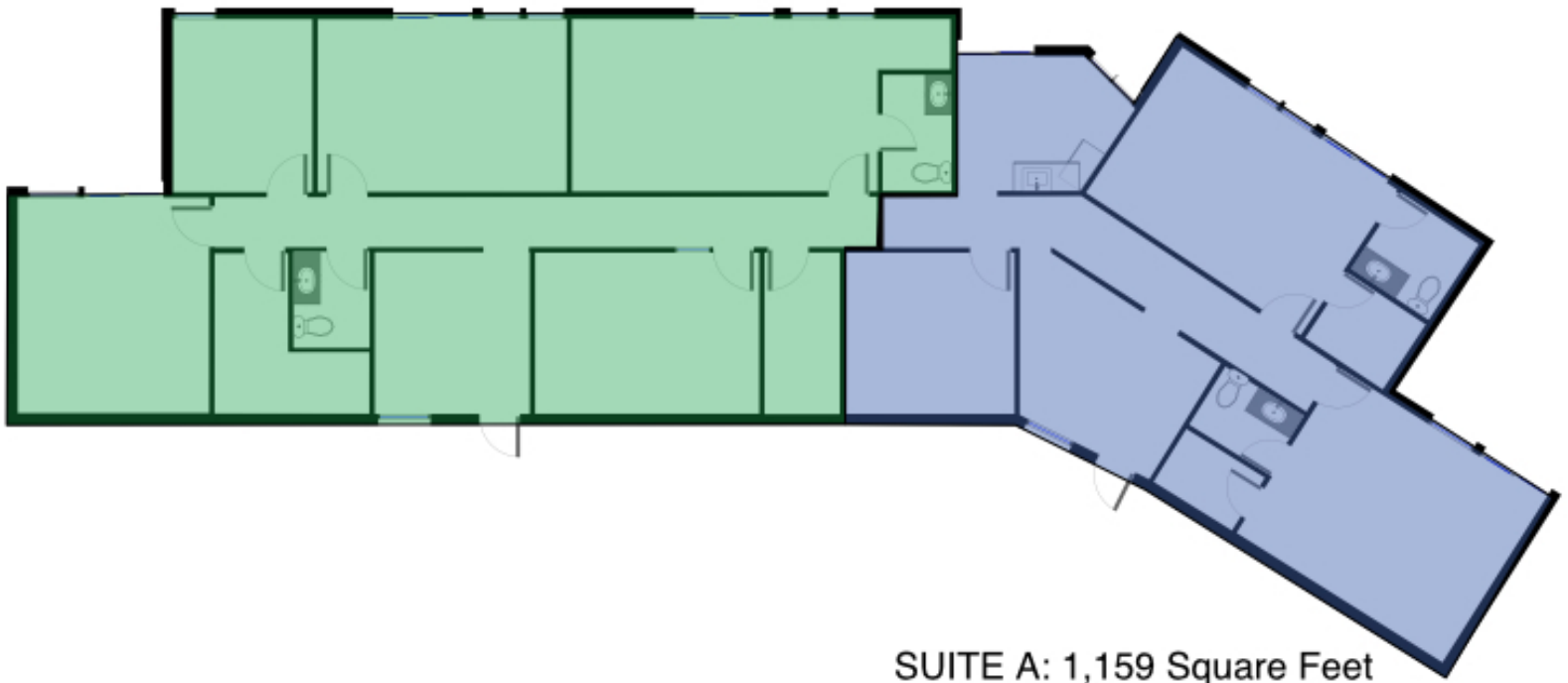
Suite B: Comprised of 4 private offices, 1 which has a private bathroom and 3 with access to the outside patio with their own private patio door. This suite also includes a reception area, conference room and file/work room.

## LOCATION OVERVIEW

The building is located along the west side of North Eastern Avenue, just south of East Memorial Road within a half-mile of the John Kilpatrick Turnpike.

**TRE DUPUY**  
405.843.7474  
tdupuy@priceedwards.com  
priceedwards.com

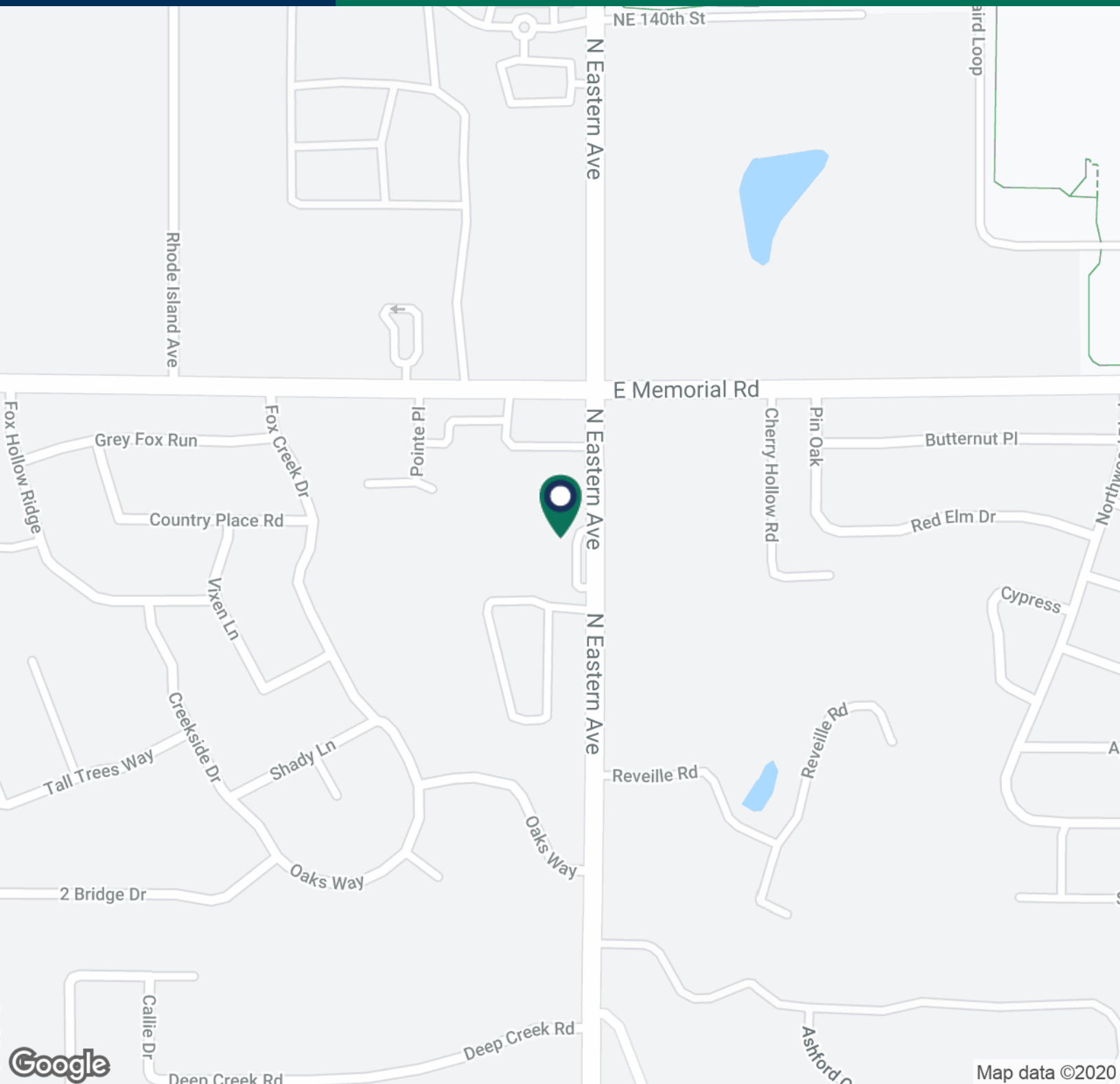
SUITE B: 2,045 Square Feet



SUITE A: 1,159 Square Feet

# 13501 N Eastern Ave

Oklahoma City, OK 73131



**TRE DUPUY**  
405.843.7474  
tdupuy@pricedwards.com  
pricedwards.com