

## 15TH STREET STATION

180 W 15TH STREET, EDMOND, OK 73013



### PROPERTY DESCRIPTION

15th Street Station is a well maintained property just west of Broadway Extension on 15th Street. The property is easily accessible and offers competitive Lease rates. End cap space available, and would work great for office space or retail.

Pylon signage space available

### PROPERTY HIGHLIGHTS

- Suite 150 - former restaurant space - Turn-Key all fixed equipment to remain
- Suite 140 - end cap space, highly visible

### OFFERING SUMMARY

<b>Lease Rate</b>	\$14.00 - 20.00 SF/yr (NNN)
<b>Available SF:</b>	1,750 - 3,250 SF
<b>Building Size:</b>	11,675 SF

SPACES	LEASE RATE	SPACE SIZE
<b>Suite 140</b>	\$20.00 SF/yr	1,750 SF
<b>Suite 150</b>	\$14.00 SF/yr	3,250 SF

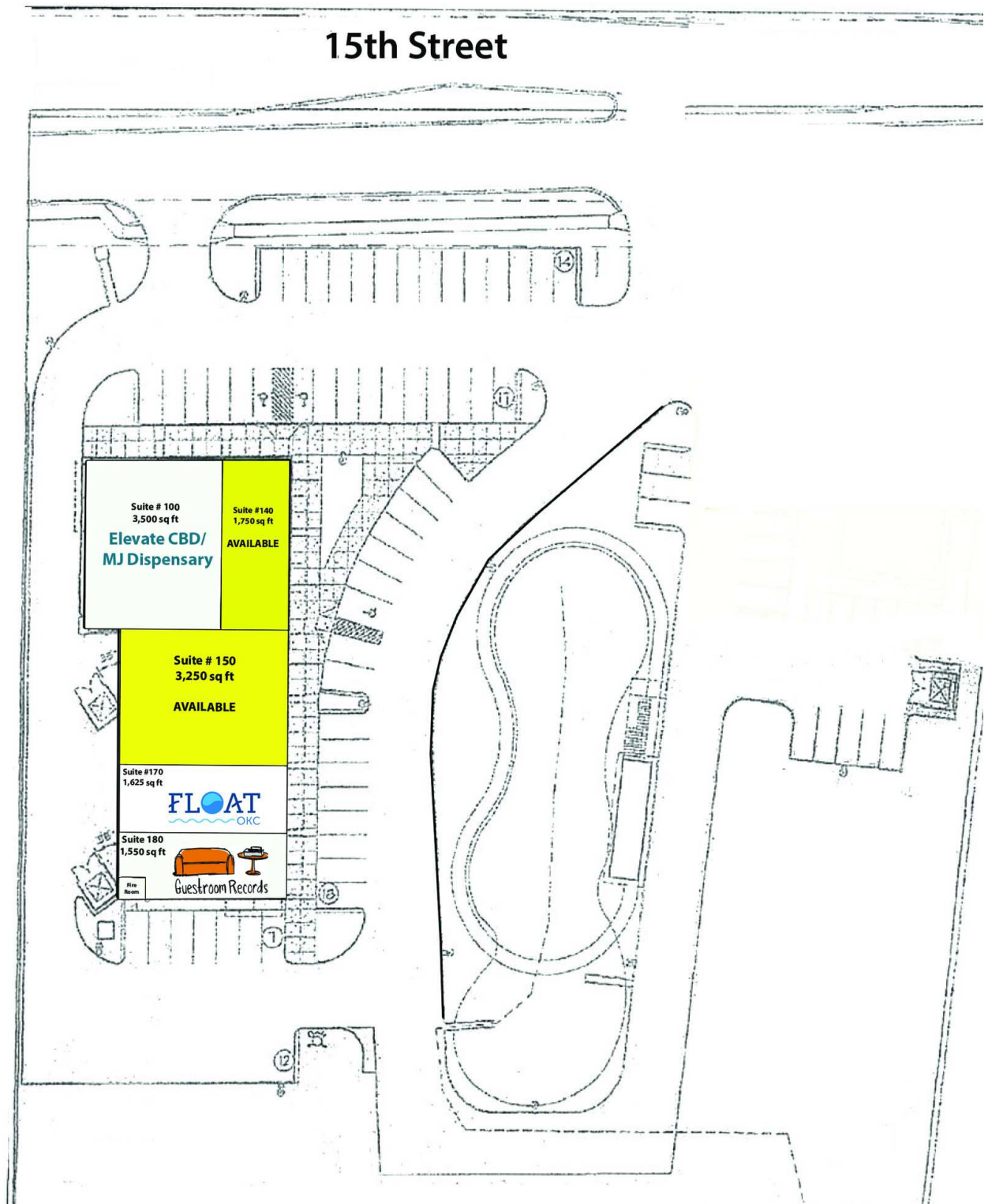
### ROSHA WOOD

rwood@priceedwards.com

O: 405.239.1219 C: 405.902.8181

### 15TH STREET STATION

180 W 15TH STREET, EDMOND, OK 73013



#### ROSHA WOOD

rwood@priceedwards.com

O: 405.239.1219 C: 405.902.8181



## 15TH STREET STATION

180 W 15TH STREET, EDMOND, OK 73013



Add text here...

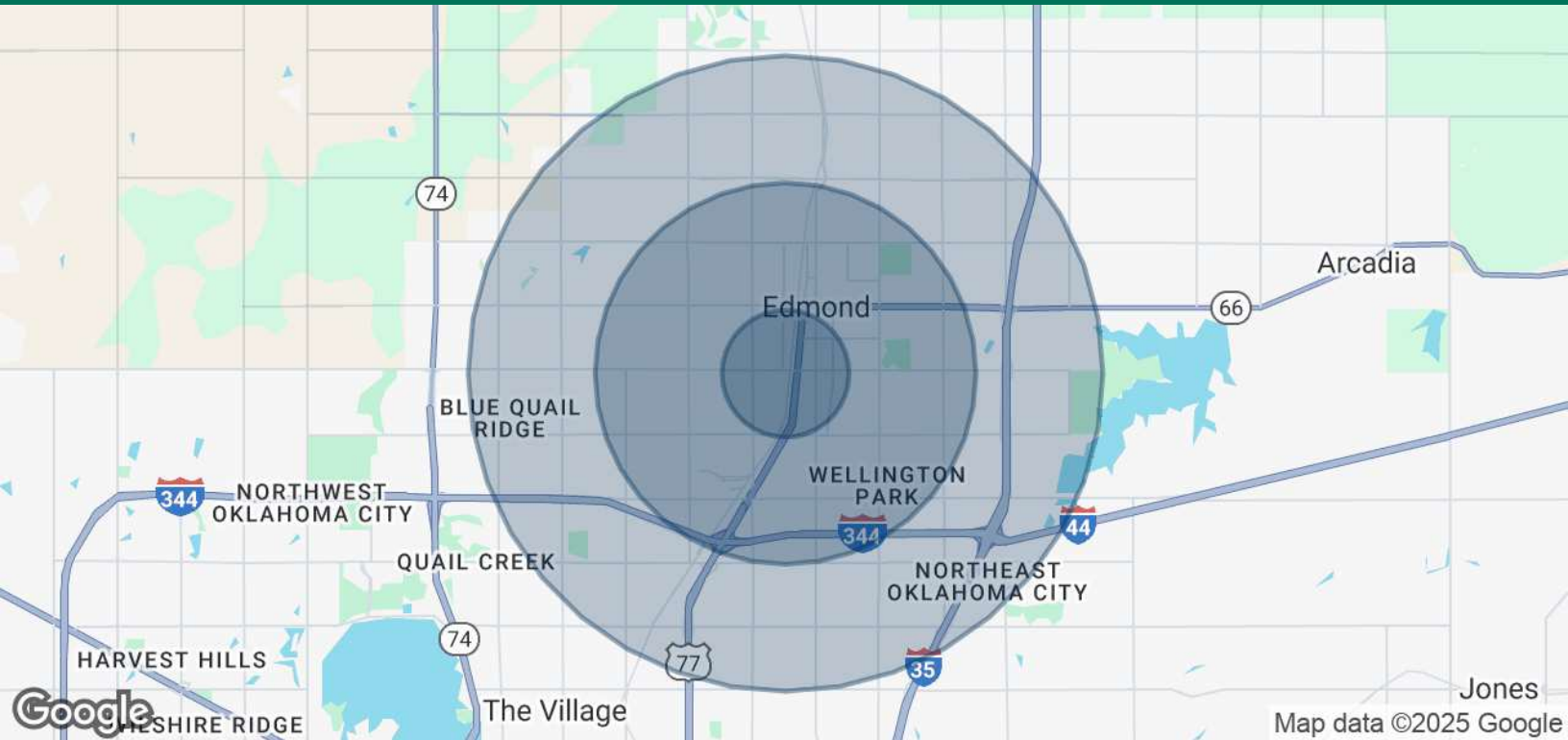
### ROSHA WOOD

[rwood@priceedwards.com](mailto:rwood@priceedwards.com)

O: 405.239.1219 C: 405.902.8181

## 15TH STREET STATION

180 W 15TH STREET, EDMOND, OK 73013



POPULATION	1 MILE	3 MILES	5 MILES
Total Population	9,568	70,892	130,780
Average Age	31.3	31.4	33.4
Average Age (Male)	29.1	29.7	32.0
Average Age (Female)	33.3	33.1	34.7
HOUSEHOLDS & INCOME	1 MILE	3 MILES	5 MILES
Total Households	3,880	27,130	50,436
# of Persons per HH	2.5	2.6	2.6
Average HH Income	\$58,372	\$70,708	\$85,364
Average House Value	\$134,321	\$175,826	\$216,040

2020 American Community Survey (ACS)

07242025

### ROSHA WOOD

rwood@priceedwards.com

O: 405.239.1219 C: 405.902.8181