

1601 MEDICAL CENTER DRIVE

EDMOND, OK 73034



LOCATION DESCRIPTION

Located off of Bryant Avenue just north of 2nd Street in Edmond.

PROPERTY HIGHLIGHTS

- Located in the heart of Edmond just east of OU Medical Center
- Near numerous restaurants
- Quick access to I-35
- Full Service Lease
- Landlord pays maintenance and utilities
- Tenant is responsible for phone and internet

OFFERING SUMMARY

1st Floor

Suite 3

±400 RSF
\$625 / month
with 3% annual increases

Suite 4:

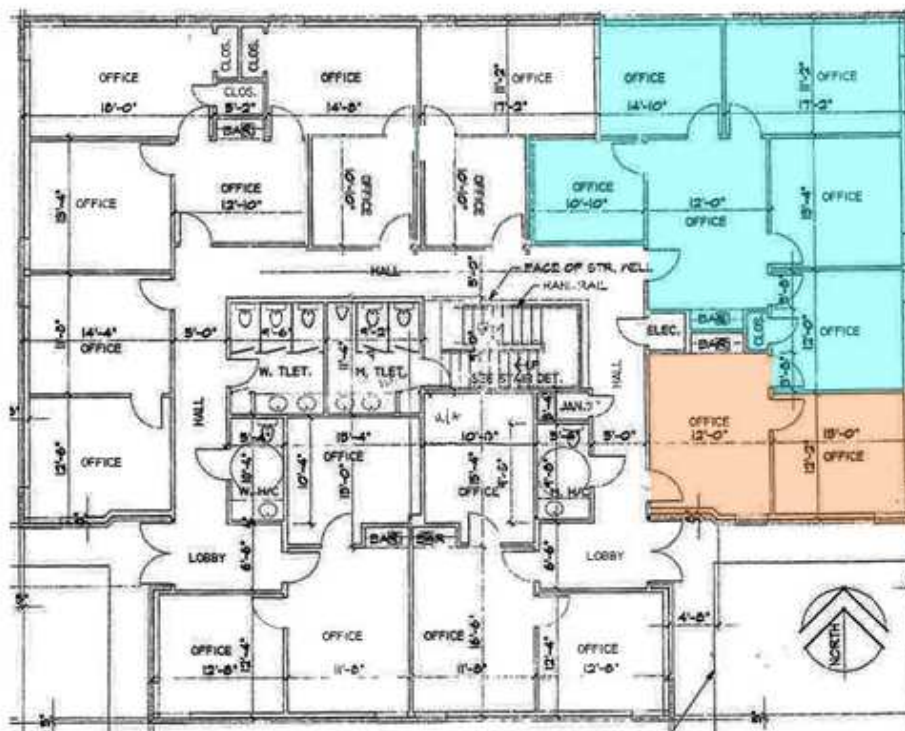
±1,250 SF
\$1,600 / month
with 3% annual increases

TOM FIELDS

tfields@priceedwards.com
O: 405.239.1205

1601 MEDICAL CENTER DRIVE

EDMOND, OK 73034



Suite 4
±1,250 RSF
\$1,600 / month

Suite 3
±400 RSF
\$625 / month



TOM FIELDS

tfields@priceedwards.com

O: 405.239.1205