

1601 MEDICAL CENTER DRIVE SUITE 4

EDMOND, OK 73034



PROPERTY DESCRIPTION

Located off of Bryant Avenue just north of 2nd Street in Edmond.

PROPERTY HIGHLIGHTS

- Located in the heart of Edmond just east of OU Medical Center
- Near numerous restaurants
- 1st floor space
- Located in the heart of Edmond just east of OU Medical Center
- Near numerous restaurants
- Quick access to I-35
- Full Service Lease
- Landlord pays maintenance and utilities
- Tenant is responsible for phone and internet

OFFERING SUMMARY

FIRST FLOOR

Suite 4:

±1,100 SF
\$1,475 / month
with 3% annual increases

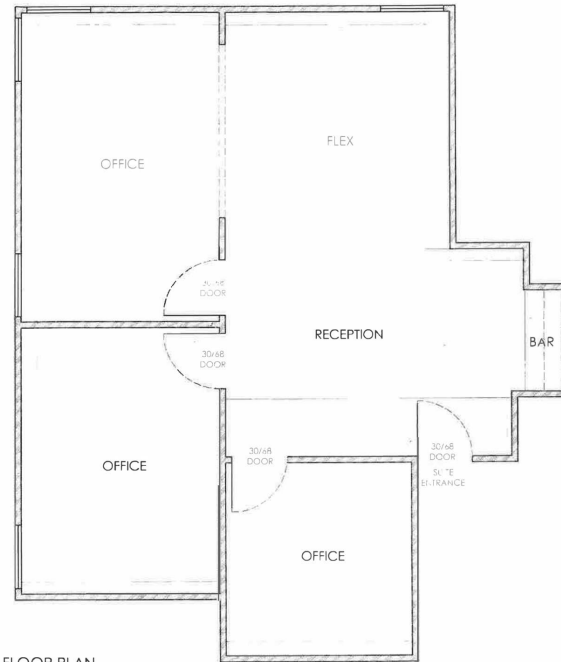
TOM FIELDS

tfields@priceedwards.com

O: 405.239.1205

1601 MEDICAL CENTER DRIVE SUITE 4

EDMOND, OK 73034



FLOOR PLAN
SUITE 4
1601 MEDICAL CENTER DR.
SYCAMORE SQUARE EDMOND, OK



TOM FIELDS

tfields@priceedwards.com

O: 405.239.1205