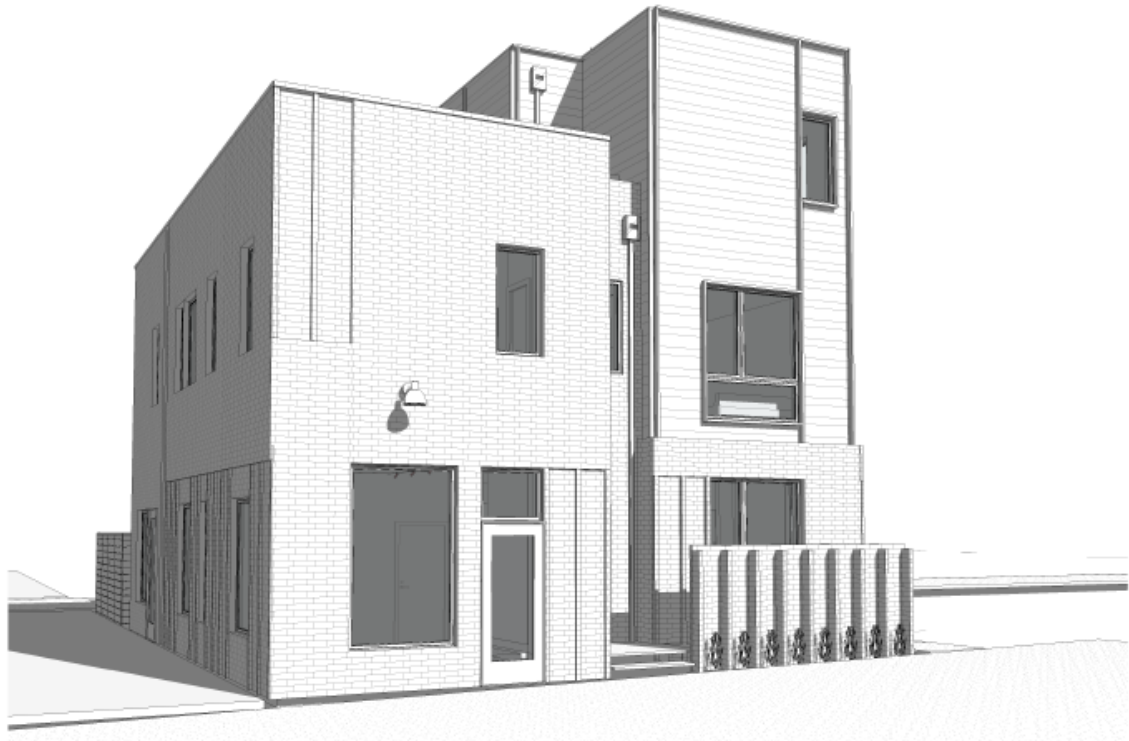


1700 & 1701 SPOKE STREET

OKLAHOMA CITY, OK 73108



PROPERTY DESCRIPTION

Two identical corner commercial suites with windows along Spoke Street and SW 16th Street will be available mid-2023 for lease. Suites are move-in ready with a private restroom. Tenants are allowed signage consistent with the existing signs along Spoke Street.

Walkable to Clarity Coffee, Taco Nation, The Big Friendly Brewery, Akai sushi & Izakaya and hundreds of residential homes, Spoke Street is one of OKC's most beautiful storefront streets. As a tenant in this location, you'll enjoy neighborhood events like the Wheeler Crit, farmer's market and pop-up retail events.

PROPERTY HIGHLIGHTS

- Corner/Anchor suites on the street
- Rent is inclusive of all expenses except utilities and interior maintenance
- Move-in ready
- Finished ADA restroom
- New construction with sealed concrete floors, high ceilings and natural light

OFFERING SUMMARY

Lease Rate:	\$1,400.00 per month (MG)
Number of Units:	2
Available SF:	669 SF
Building Size:	3,214 SF

ALLISON BARTA BAILEY

abailey@priceedwards.com
O: 405.239.1245 C: 405.620.3883

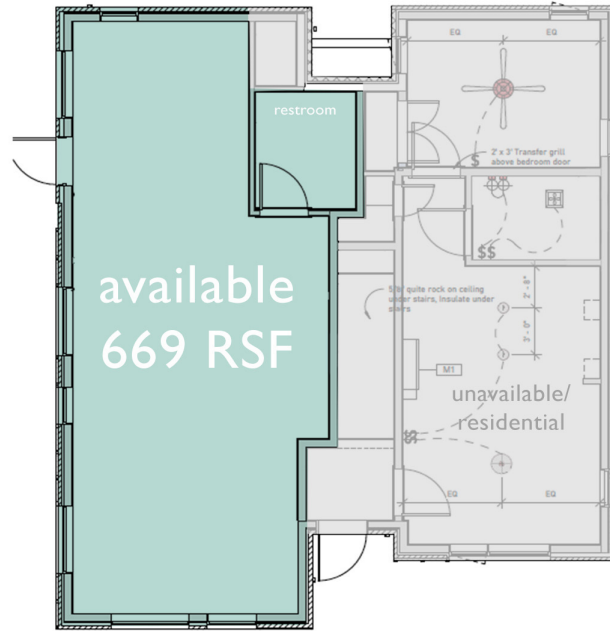
1700 & 1701 SPOKE STREET

OKLAHOMA CITY, OK 73108



ALLISON BARTA BAILEY
abailey@priceedwards.com
O: 405.239.1245 C: 405.620.3883

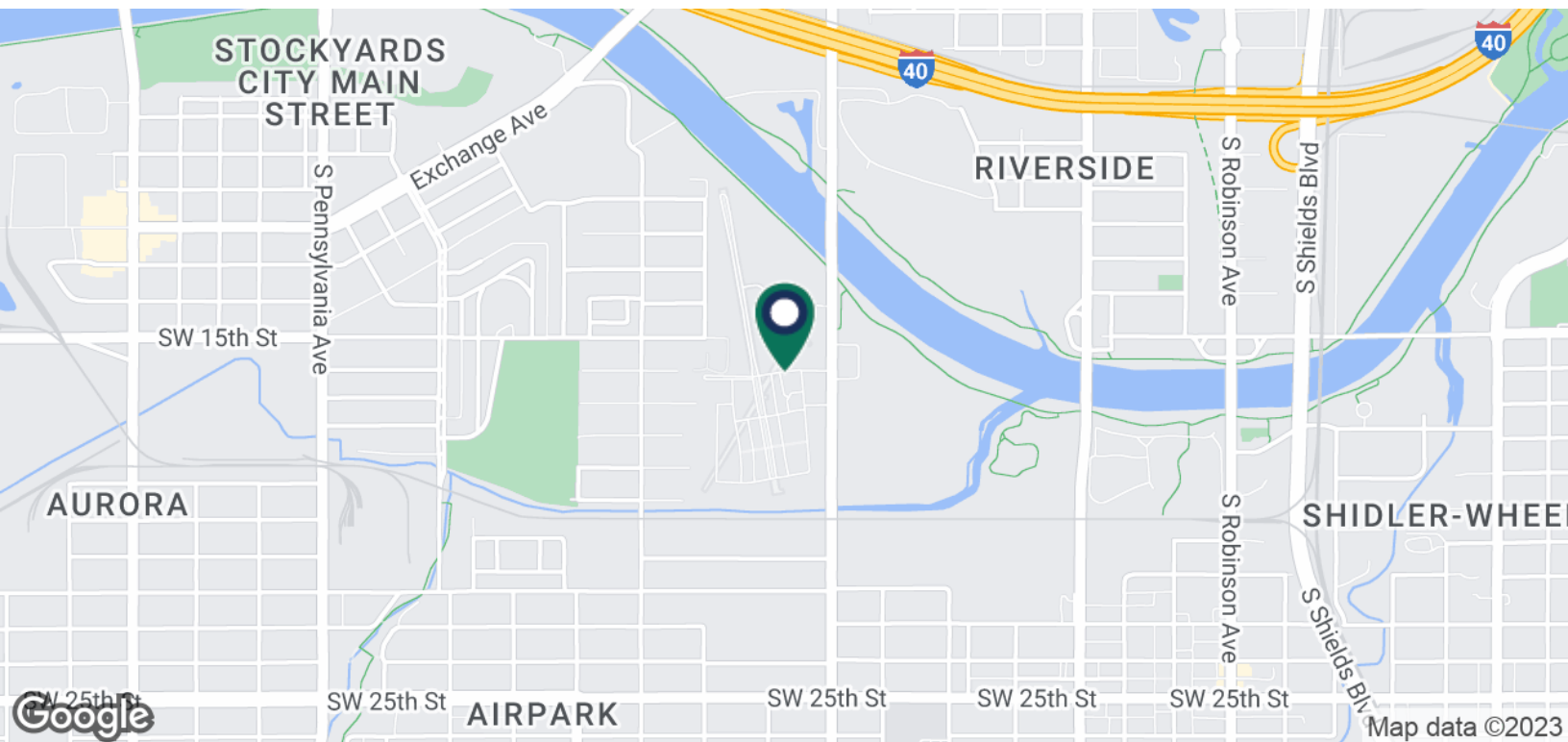
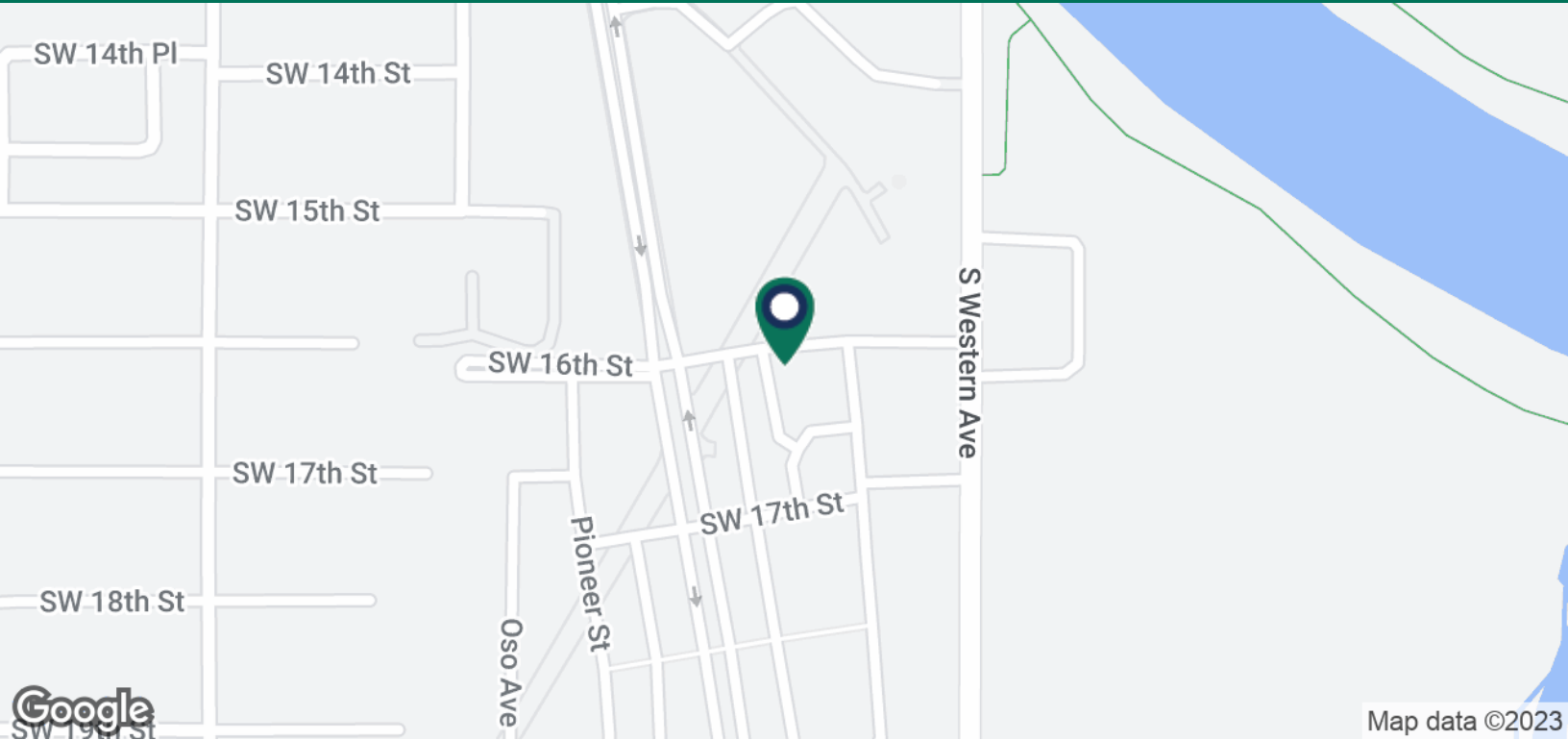
1700 & 1701 SPOKE STREET
AVAILABLE SUITES



NOW AVAILABLE FOR LEASE

TENANT	SUITE	SPACE SIZE	RATE
Available	1700 Spoke Street	669 SF	\$1,400 per month
Available	1701 Spoke Street	669 SF	\$1,400 per month

1700 & 1701 SPOKE STREET 1700 & 1701 SPOKE STREET OKLAHOMA CITY, OK 73108



ALLISON BARTA BAILEY

abailey@priceedwards.com

O: 405.239.1245 C: 405.620.3883