



OFFERING SUMMARY

Available SF: 2,160 - 2,930 SF

Lease Rate: Negotiable

Year Built: 1965

Year Remodeled: 2021

Building Size: 12,221

Market: Downtown OKC /
Auto Alley

PROPERTY OVERVIEW

This Auto Alley redevelopment project consists of Skydance Brewery (Suite A), a 2,100 SF food & beverage suite (Suite B), an office/retail suite (Suite C) and a dedicated parking lot for the building. Parking spaces and an alley-side loading area are available to tenants.

All suites have industrial features and raw brick walls. New storefronts and shared amenities are provided by the Landlord with delivery available immediately for tenants.

PROPERTY HIGHLIGHTS

- Dedicated parking lot
- Nearby residential and office tenants
- Patio and courtyard provided in by Landlord
- Sign opportunities for all tenants

ALLISON BARTA BAILEY
405.239.1245
abailey@priceedwards.com
priceedwards.com

AARON DIEHL
405.843.7474 x255
adiehl@priceedwards.com
priceedwards.com

1 NE 7th Street

1 NE 7th Street, Oklahoma City, OK 73104

LEASE TYPE | NNN

TOTAL SPACE | 2,160 - 2,930 SF

LEASE TERM | Negotiable

LEASE RATE | Negotiable



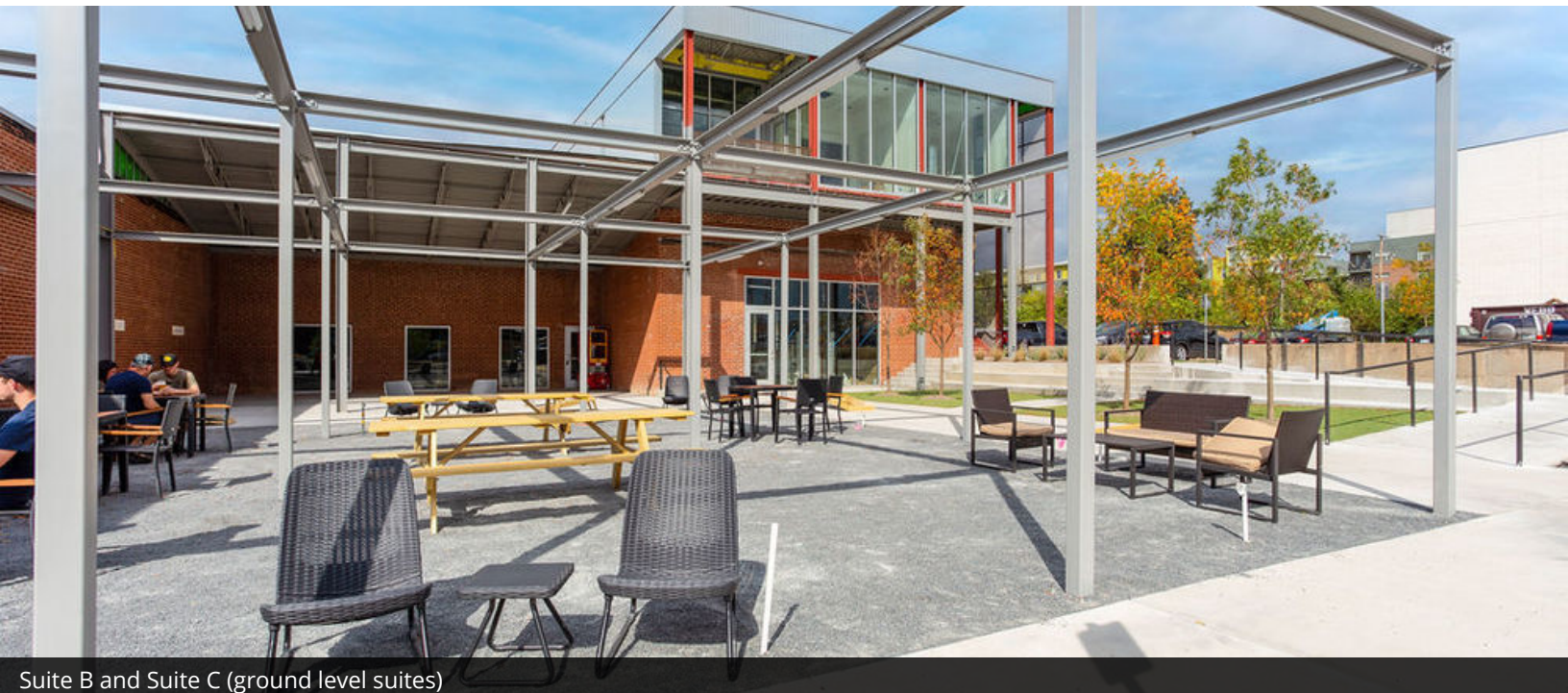
SUITE	SIZE (SF)	LEASE TYPE	LEASE RATE	DESCRIPTION
1 NE 7th Street, B	2,160 SF	NNN	Negotiable	14.5 ft ceiling, access to patio & courtyard
1 NE 7th Street, C	2,930 SF	NNN	Negotiable	13.5 ft ceiling, access to courtyard

ALLISON BARTA BAILEY
405.239.1245
abailey@priceedwards.com
priceedwards.com

AARON DIEHL
405.843.7474 x255
adiehl@priceedwards.com
priceedwards.com



Skydance Brewing (shown on left) and available Suite B (shown on right) with shared patio



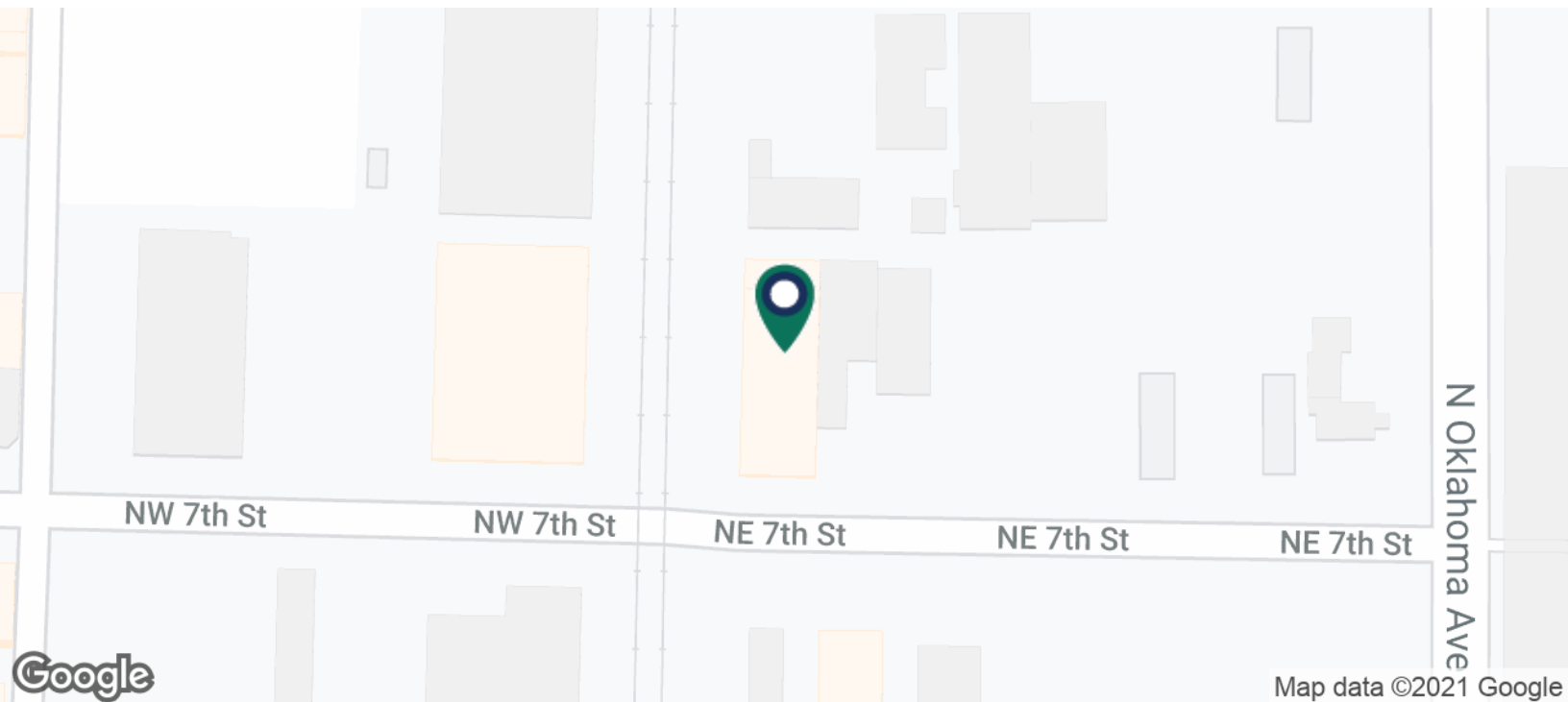
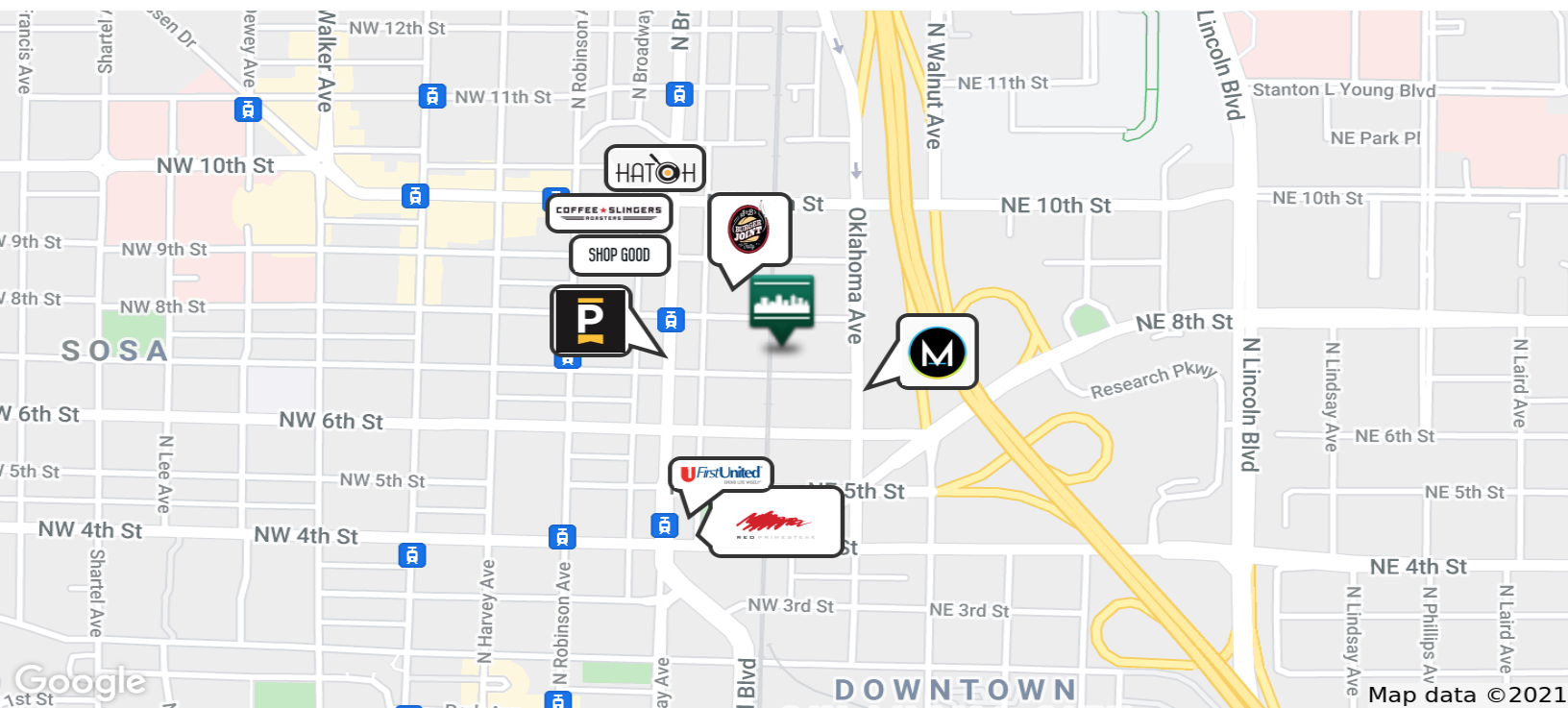
Suite B and Suite C (ground level suites)

ALLISON BARTA BAILEY
405.239.1245
abailey@priceedwards.com
priceedwards.com

AARON DIEHL
405.843.7474 x255
adiehl@priceedwards.com
priceedwards.com

1 NE 7th Street

1 NE 7th Street, Oklahoma City, OK 73104



ALLISON BARTA BAILEY
405.239.1245
abailey@pricedwards.com
pricedwards.com

AARON DIEHL
405.843.7474 x255
adiehl@pricedwards.com
pricedwards.com