

2237- 2241 W MEMORIAL RD 2237-2241 W MEMORIAL RD OKC, OK 73134



PROPERTY DESCRIPTION

2237-2241 W Memorial Rd is offering 1,132 SF of retail space available for lease. The space is in white-box condition with utilities, lights, HVAC and 1 ADA restroom. Co-tenants include Gold's Gym, Chuck E Cheese, AT&T Wireless, Hope Infusions, and Native Chiropractic.

PROPERTY HIGHLIGHTS

- White-Box Condition

SPACE	LEASE RATE		SPACE SIZE
2237 W Memorial Ste 118	\$20.00 - 22.00 SF/yr		1,132 SF
DEMOGRAPHICS	1 MILE	3 MILES	5 MILES
Total Households	7,099	34,108	78,599
Total Population	11,149	71,425	174,030
Average HH Income	\$47,074	\$80,266	\$87,867

OFFERING SUMMARY

Lease Rate	\$20.00 - 22.00 SF/yr (NNN)
Number of Units:	6
Available SF:	1,132 SF
Building Size:	23,000 SF

TRAFFIC COUNT

W Memorial Rd	east	11,200
W Memorial Rd	west	12,000
N Pennsylvania Ave	north	14,400
N Pennsylvania Ave	south	14,300
John Kilpatrick Turnpike	east	68,801
John Kilpatrick Turnpike	west	70,210

AARON DIEHL

adiehl@priceedwards.com
O: 405.651.3308

2237- 2241 W MEMORIAL RD 2237-2241 W MEMORIAL RD OKLAHOMA CITY, OK 73134

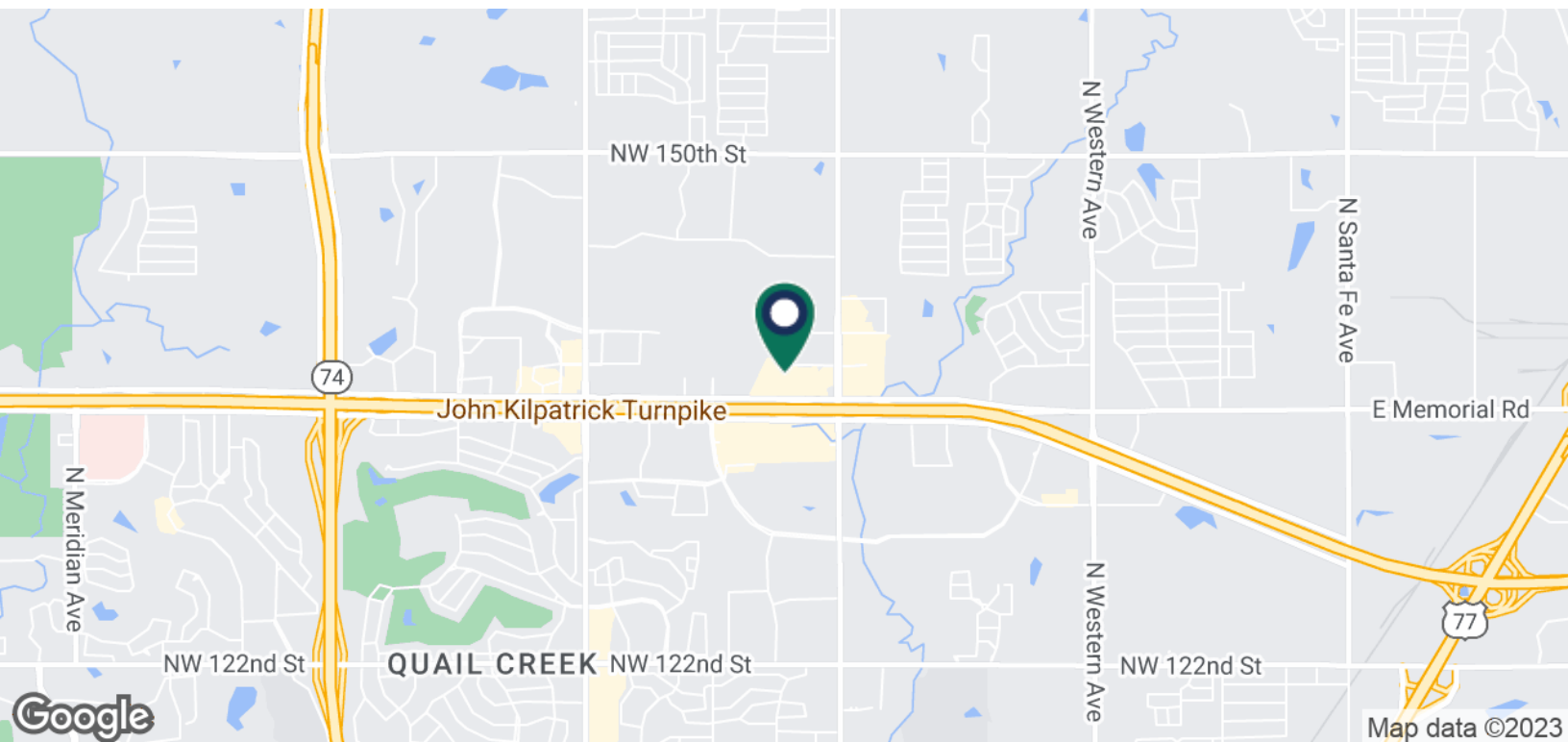


AARON DIEHL

adiehl@priceedwards.com

O: 405.651.3308

2237- 2241 W MEMORIAL RD 2237-2241 W MEMORIAL RD, OKC, OK 73134

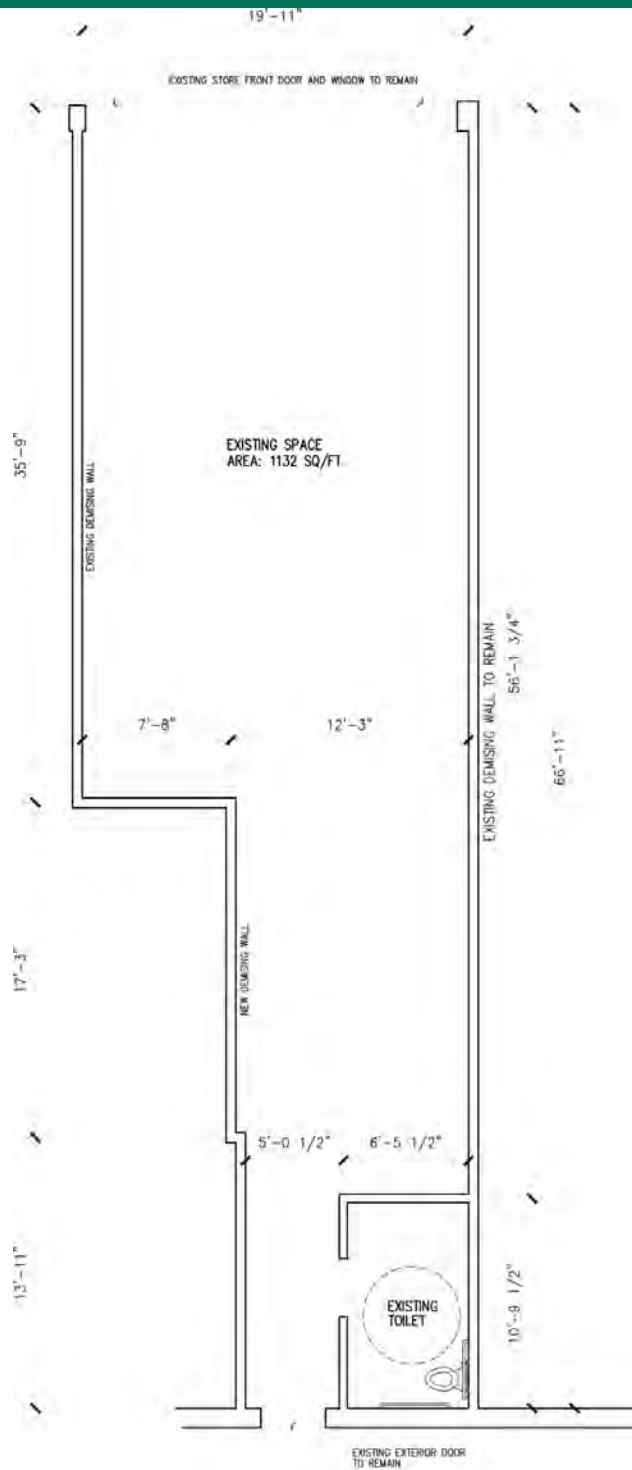


AARON DIEHL

adiehl@priceedwards.com

O: 405.651.3308

2237- 2241 W MEMORIAL RD 2237-2241 W MEMORIAL RD, OKC, OK 73134



1 EXISTING FLOOR PLAN
A2.2 SCALE: 1/4"=1'-0"

AARON DIEHL

adiehl@priceedwards.com

O: 405.651.3308