



#### INDUSTRIAL SPACE NOW AVAILABLE

Building Size:	6,000 SF
Lease Rate:	\$13.00/SF (NNN)
Lot Size:	1.0 Acre MOL
Clear Height:	15'-16'
Overhead Door:	15'X12'
Year Built:	2006
Zoning:	PUD, I-2

#### LOCATION OVERVIEW

Conveniently located directly off SE 29th & Global Parkway - less than a half-mile north of Interstate 40.

#### PROPERTY OVERVIEW

- The 3,000 square feet of office space boasts 11 individual office plus a conference room, reception and break room.

- Fenced-in lot provides excellent security for material and fleet storage.

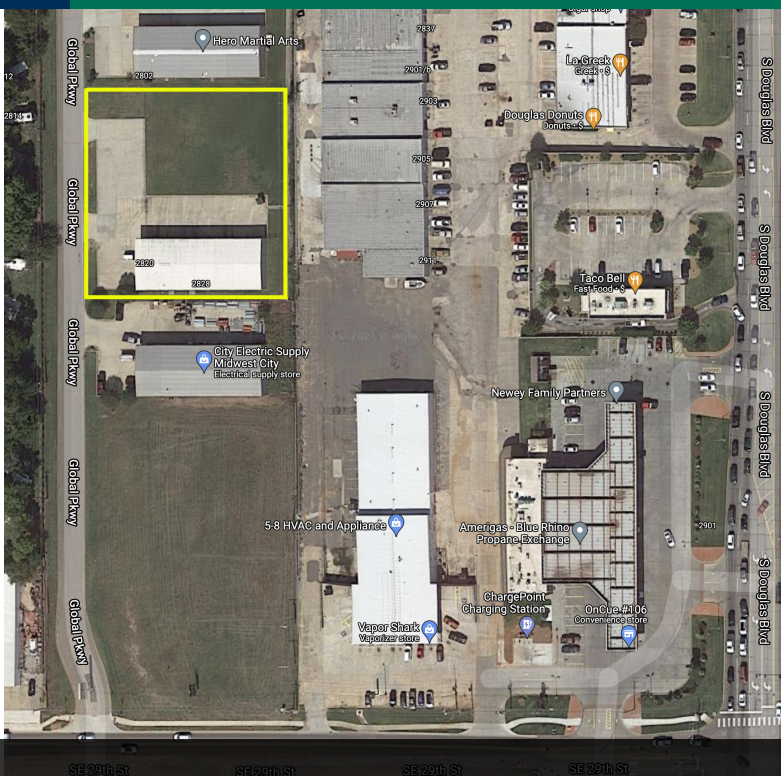
- Location of the property provides easy access to Interstate 40 and Tinker Air Force Base.

**CHRIS ROBERTS**  
405.239.1236  
croberts@priceedwards.com  
priceedwards.com

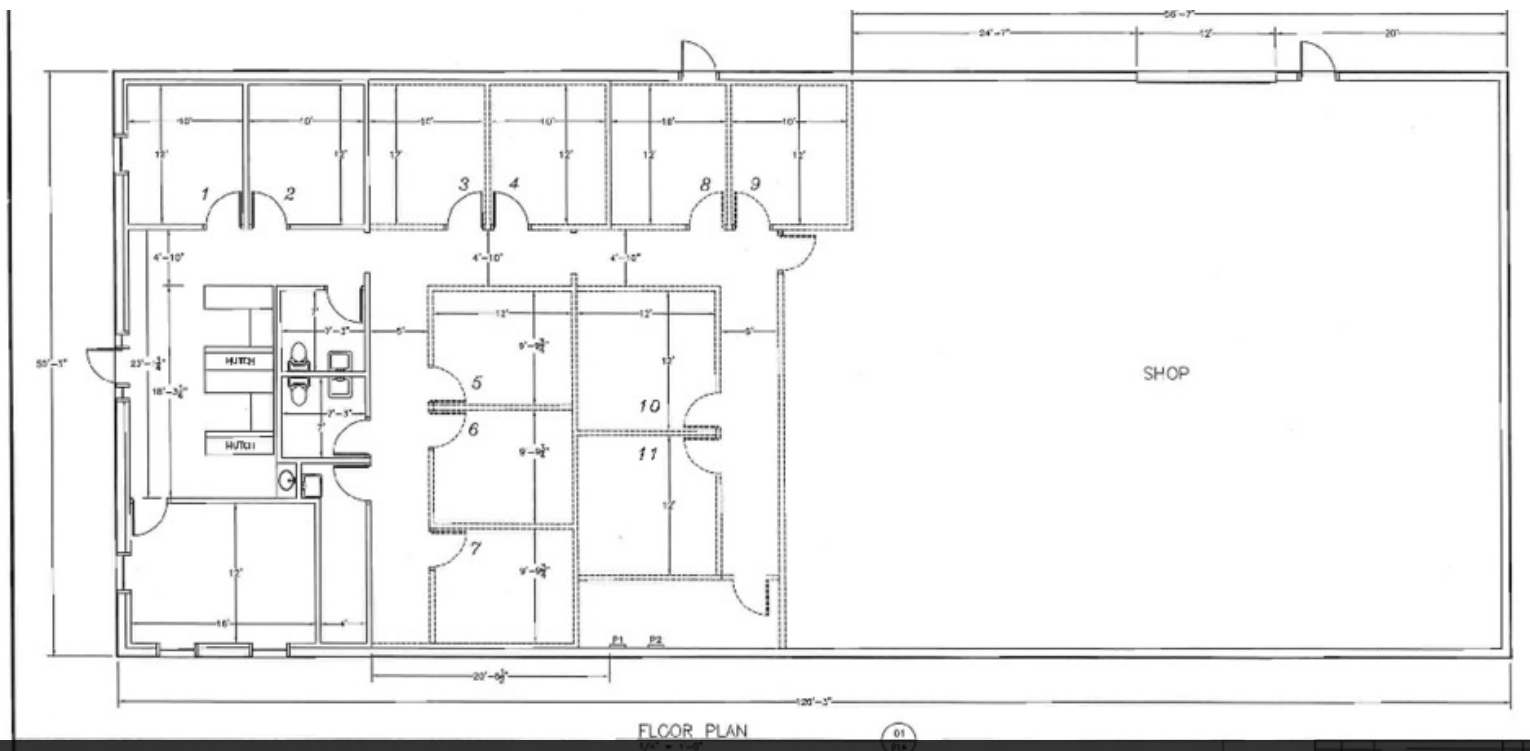
**CODY BEAT**  
405.239.1235  
cbeat@priceedwards.com  
priceedwards.com

# Industrial Property for Lease

2820 Global Parkway, Midwest City, OK 73110



Aerial boundary of the property



Floor Plan

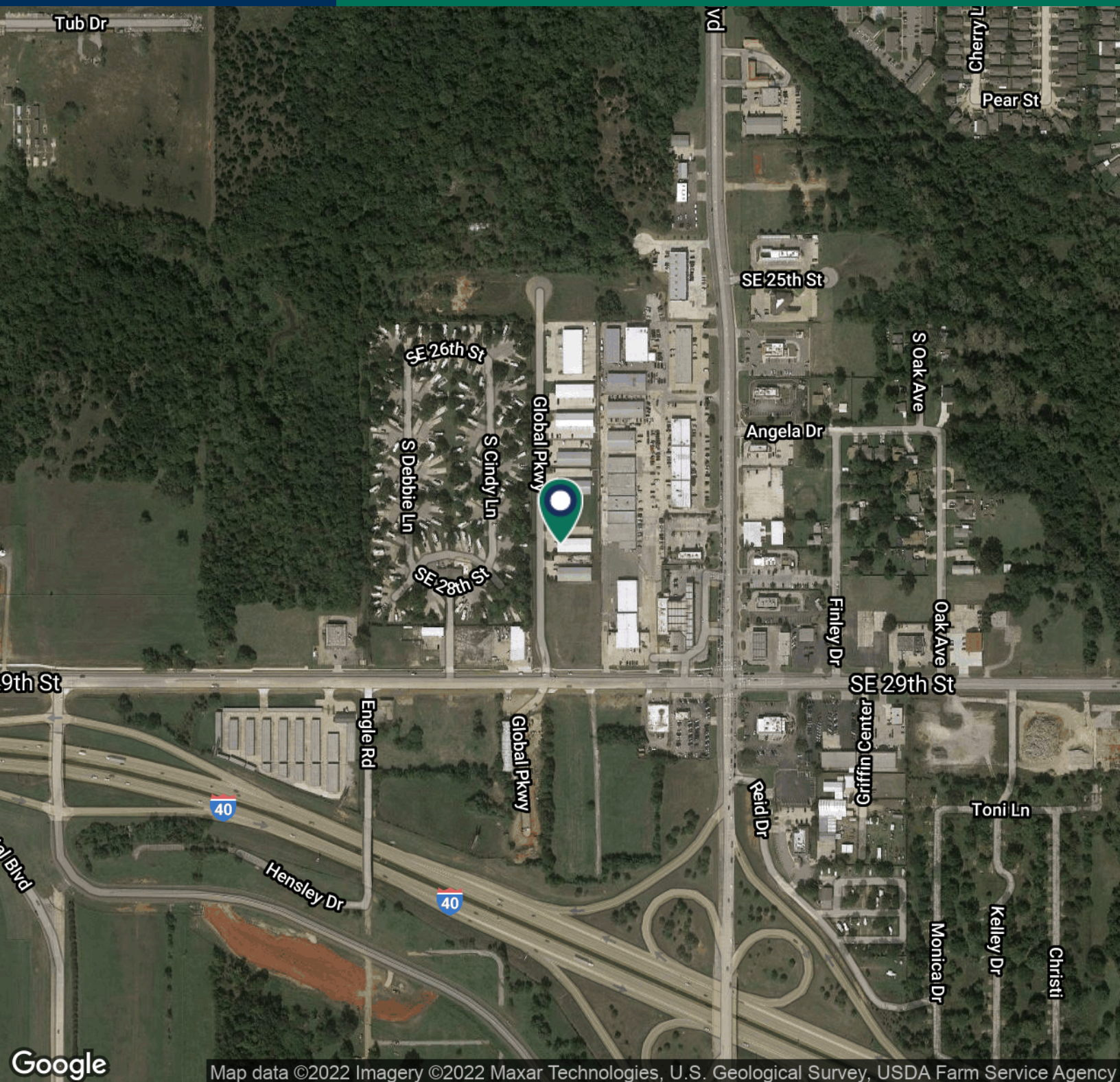
**CHRIS ROBERTS**  
405.239.1236  
croberts@priceedwards.com  
priceedwards.com

**CODY BEAT**  
405.239.1235  
cbeat@priceedwards.com  
priceedwards.com



# Industrial Property for Lease

2820 Global Parkway, Midwest City, OK 73110



Map data ©2022 Imagery ©2022 Maxar Technologies, U.S. Geological Survey, USDA Farm Service Agency

**CHRIS ROBERTS**  
405.239.1236  
croberts@priceedwards.com  
priceedwards.com

**CODY BEAT**  
405.239.1235  
cbeat@priceedwards.com  
priceedwards.com