

CLASS A OFFICE SPACE FOR LEASE

301 LILAC DRIVE, EDMOND, OK 73034



LOCATION DESCRIPTION

Located in East Edmond; Lilac Drive is on the south side of E. 2nd Street which is located 3/4 of a mile west of I-35.

PROPERTY HIGHLIGHTS

- Ample on-site parking
- Executive office space
- Class A office space
- Ready for Immediate Occupancy
- Locally owned and managed
- Includes normal utilities, janitorial & maintenance. Tenant pays internet/phone
- 3% annual increases

OFFERING SUMMARY

Suite 210:	±1,075 RSF \$1,703 / month
Market:	Edmond
Class:	A

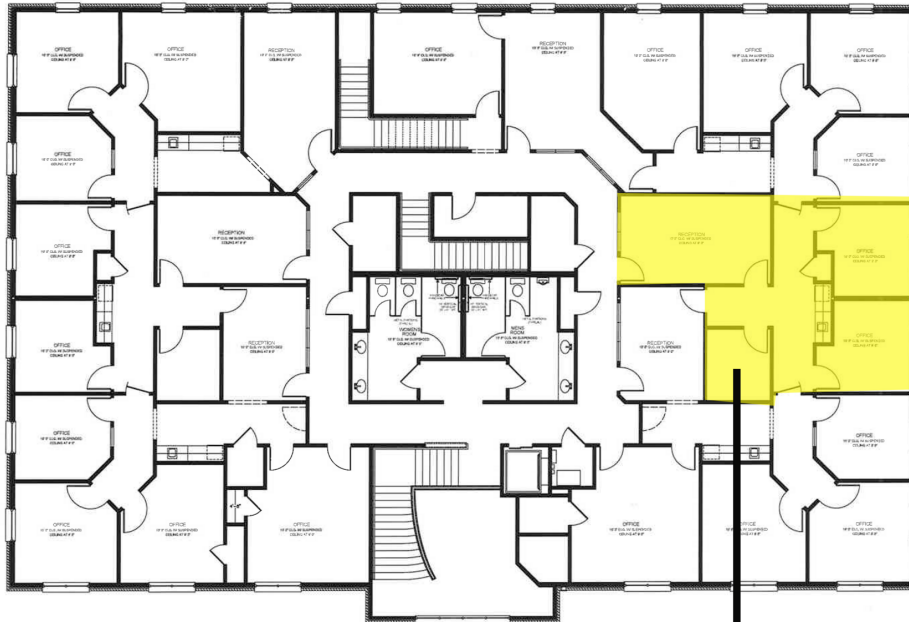
TOM FIELDS

tfields@priceedwards.com

O: 405.239.1205

CLASS A OFFICE SPACE FOR LEASE

301 LILAC DRIVE, EDMOND, OK 73034



2nd Floor

Suite 210
±1,075 RSF | \$1,703 / month



E 2nd Street (Edmond Rd.)

Lilac Drive



TOM FIELDS

tfields@priceedwards.com

O: 405.239.1205