



## OFFERING SUMMARY

**Available SF:** 1,292 - 21,526 SF

**Lease Rate:** \$20.00 SF/YR

**Lease Type:** Full Service

**Lot Size:** 5 Acres

**Year Built:** 1999

**Building Size:** 41,992 SF

**Submarket:** Memorial Corridor

## PROPERTY HIGHLIGHTS

- Inviting two story lobby atrium
- Flexible floor layout
- Close proximity to several business oriented amenities
- Video security surveillance system
- Easy access to John Kilpatrick Turnpike, Lake Hefner Pkwy & I-235
- Abundant surface parking
- Portico drive
- Management and on-site engineering staff
- Local ownership

**TRE DUPUY**  
405.843.7474  
tdupuy@priceedwards.com

# 3121 Quail Springs Parkway

3121 Quail Springs Parkway. Oklahoma City, OK 73134



Exterior



Click Link for 3D Walkthrough of lobby: <https://my.matterport.com/show/?m=7aoVnJ2nEs1>

**TRE DUPUY**  
405.843.7474  
tdupuy@priceedwards.com

The information above has been obtained from sources believe reliable. While we do not doubt its accuracy, we have not verified it and make no guarantee, warranty, or representation about it. You and your legal and technical advisors should conduct a careful, independent investigation of the property to determine to your satisfaction to the suitability of the property for your needs.

# 3121 Quail Springs Parkway

3121 Quail Springs Parkway, Oklahoma City, OK 73134

**Lease Rate:** \$20.00 SF/YR      **Total Space:** 1,292 - 21,526 SF  
**Lease Type:** Full Service      **Lease Term:** Negotiable

SPACE	SPACE USE	LEASE RATE	LEASE TYPE	SIZE (SF)
Suite 130	Office Building	\$20.00 SF/YR	Full Service	1,289 SF
Suite 150	Office Building	\$20.00 SF/YR	Full Service	1,293 SF
Suite 170	Office Building	\$20.00 SF/YR	Full Service	2,173 SF
Suite 160	Office Building	\$20.00 SF/YR	Full Service	3,113 SF
Suite 200	Office Building	\$20.00 SF/YR	Full Service	21,526 SF

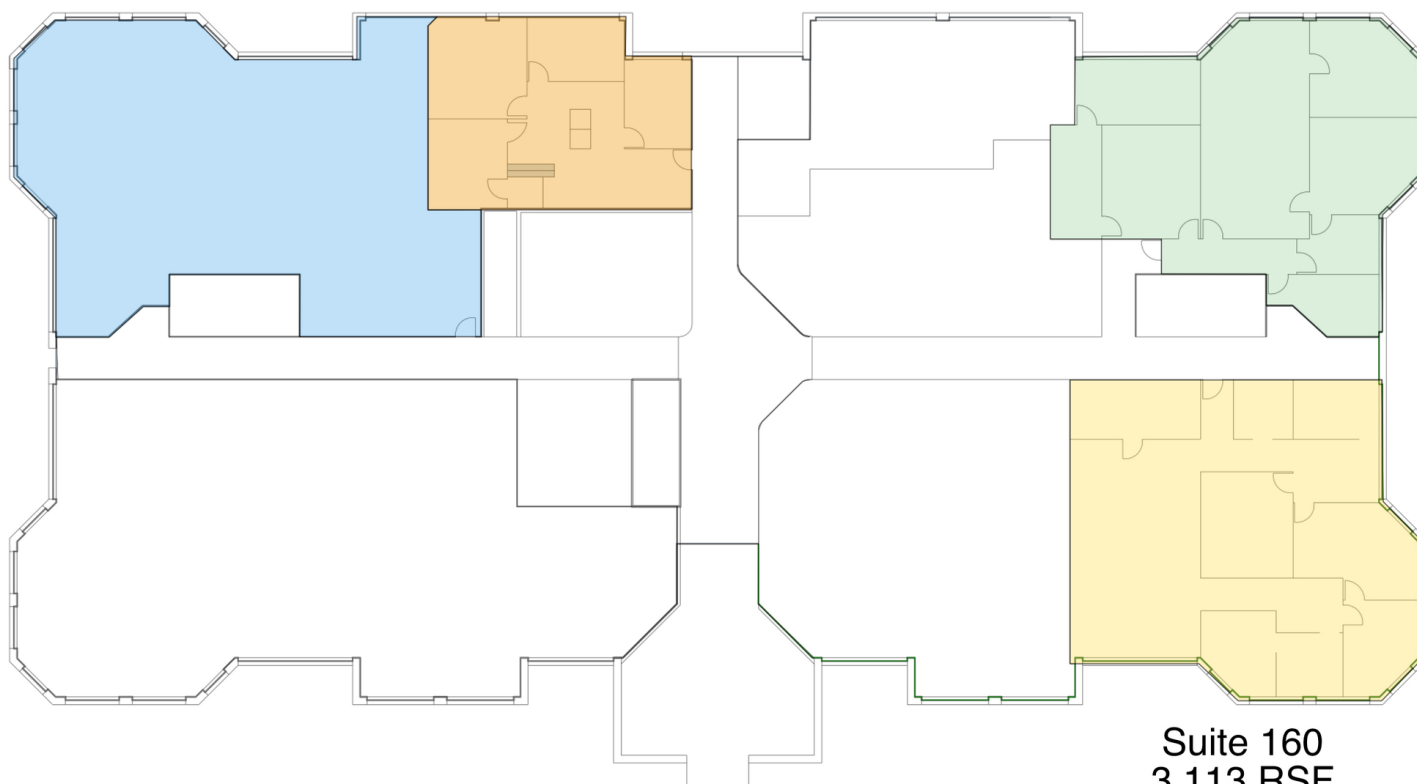
# 3121 Quail Springs Parkway

3121 Quail Springs Parkway, Oklahoma City, OK 73134

**Suite 150**  
3,165 RSF

**Suite 130**  
1,292 RSF

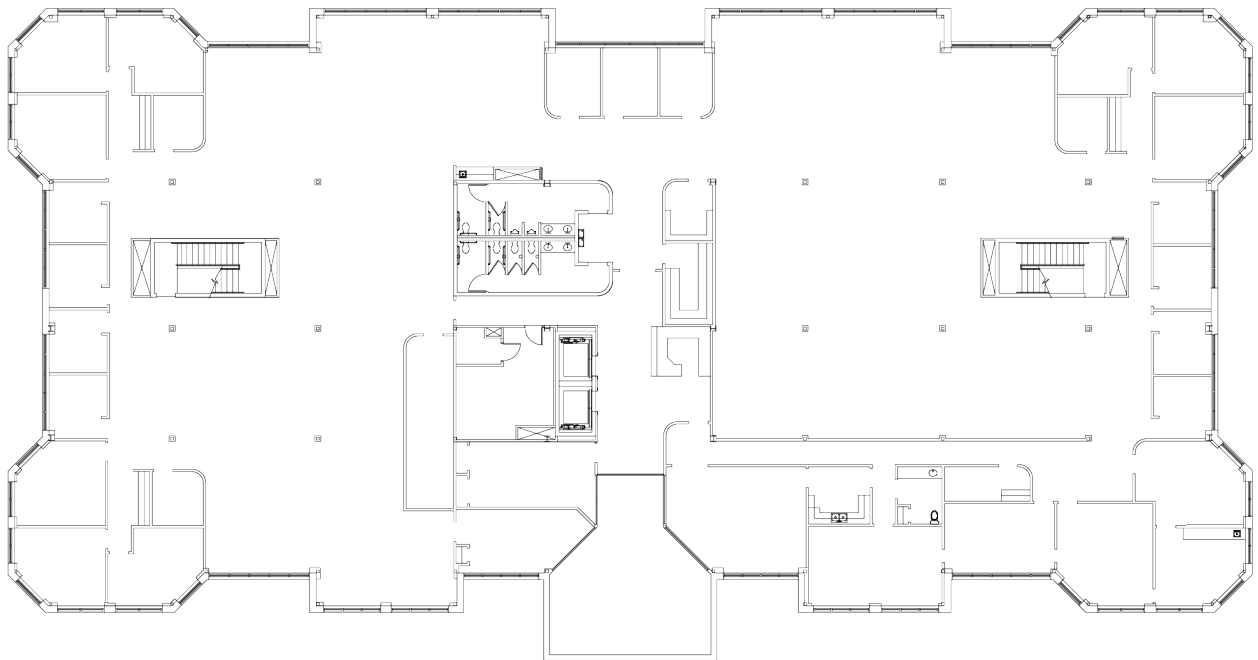
**Suite 170**  
2,173 RSF



**Suite 160**  
3,113 RSF

# 3121 Quail Springs Parkway

3121 Quail Springs Parkway, Oklahoma City, OK 73134



2

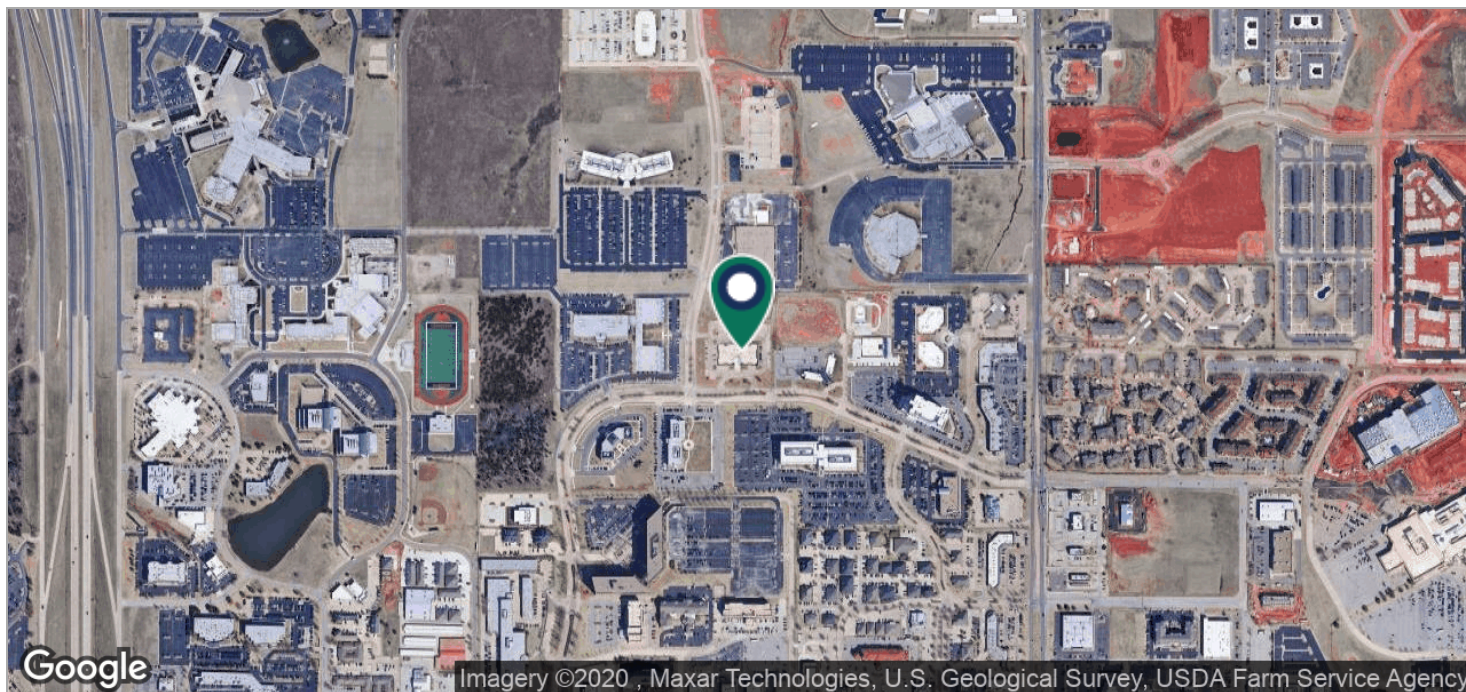
SUITE 200  
21,526 RSF

TRE DUPUY  
405.843.7474  
[tdupuy@priceedwards.com](mailto:tdupuy@priceedwards.com)

The information above has been obtained from sources believe reliable. While we do not doubt its accuracy, we have not verified it and make no guarantee, warranty, or representation about it. You and your legal and technical advisors should conduct a careful, independent investigation of the property to determine to your satisfaction to the suitability of the property for your needs.

# 3121 Quail Springs Parkway

3121 Quail Springs Parkway, Oklahoma City, OK 73134



TRE DUPUY  
405.843.7474  
tdupuy@pricedwards.com

The information above has been obtained from sources believe reliable. While we do not doubt its accuracy, we have not verified it and make no guarantee, warranty, or representation about it. You and your legal and technical advisors should conduct a careful, independent investigation of the property to determine to your satisfaction to the suitability of the property for your needs.