

PRICE EDWARDS AND CO.

3201 QUAIL SPRINGS PARKWAY

FOR LEASE



### QUAIL COMMERCE CENTER

3201 QUAIL SPRINGS PKWY, OKLAHOMA CITY, OK 73134



#### PROPERTY SUMMARY

**\$19.00/SF**  
Rental Rate

**25,000 - 103,500**  
RSF

**FULL SERVICE GROSS**  
Lease Type

**C-3**  
Zoning

**6.7/1,000 RSF**  
Parking Ratio

**11.34 ACRES**  
Site Area

**2000**  
Year Built

TRE DUPUY  
tdupuy@priceedwards.com  
O: 405.239.1210

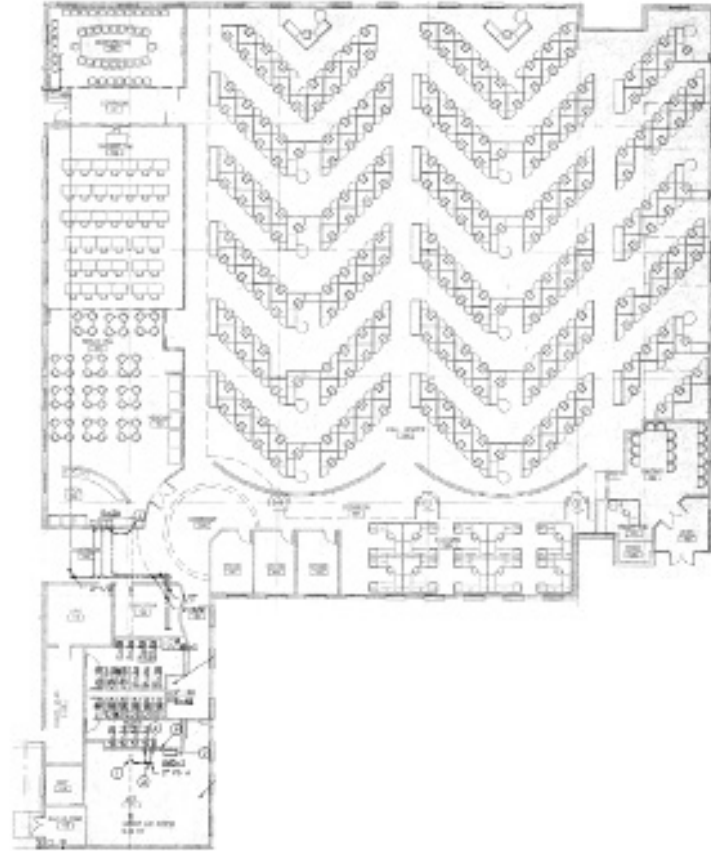
IAN SELF  
iself@priceedwards.com  
O: 405.239.1271



### QUAIL COMMERCE CENTER

3201 QUAIL SPRINGS PKWY, OKLAHOMA CITY, OK 73134

#### Building 2 - North



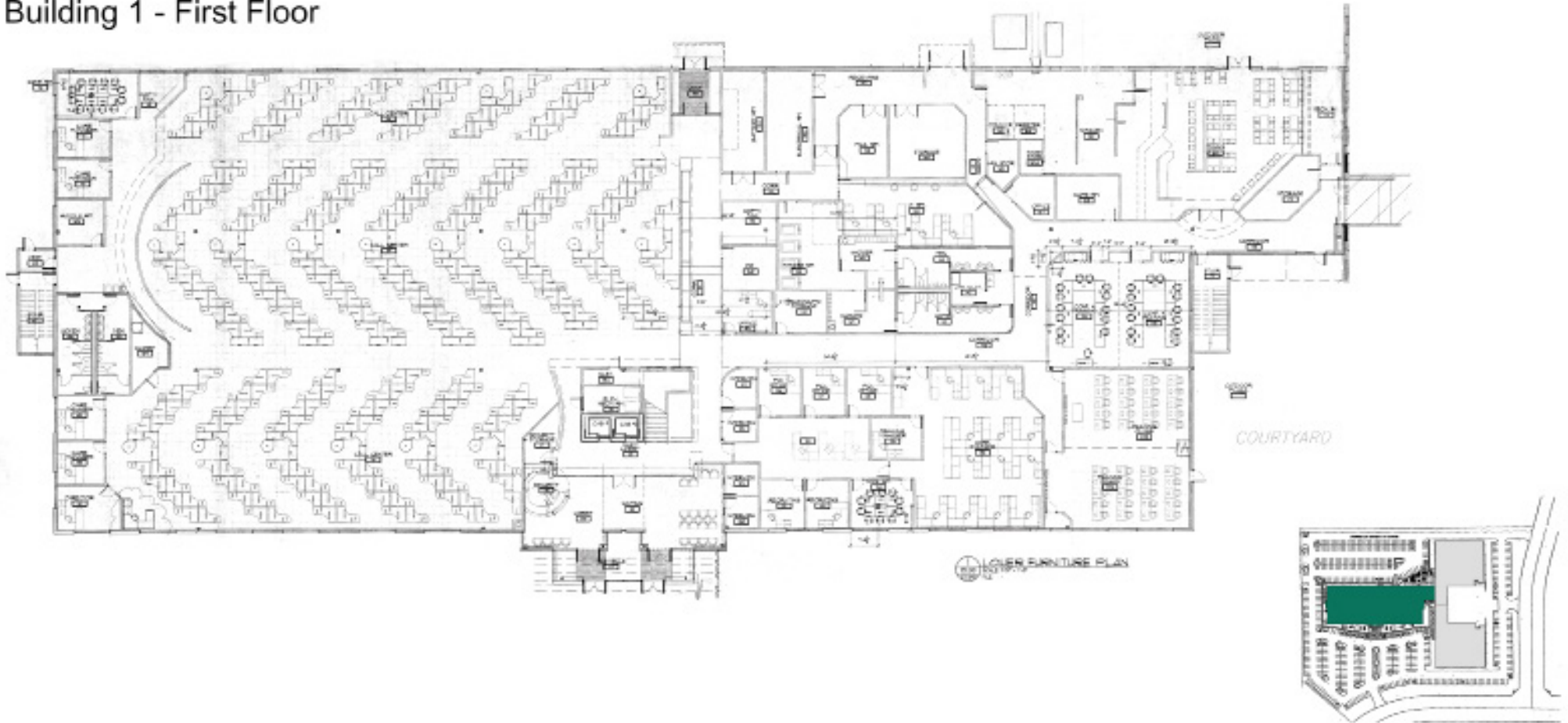
TRE DUPUY  
tdupuy@priceedwards.com  
O: 405.239.1210

IAN SELF  
iself@priceedwards.com  
O: 405.239.1271

### QUAIL COMMERCE CENTER

3201 QUAIL SPRINGS PKWY, OKLAHOMA CITY, OK 73134

#### Building 1 - First Floor



TRE DUPUY  
tdupuy@priceedwards.com  
O: 405.239.1210

IAN SELF  
iself@priceedwards.com  
O: 405.239.1271

### QUAIL COMMERCE CENTER

3201 QUAIL SPRINGS PKWY, OKLAHOMA CITY, OK 73134

#### Building 1 - Second Floor



TRE DUPUY  
tdupuy@priceedwards.com  
O: 405.239.1210

IAN SELF  
iself@priceedwards.com  
O: 405.239.1271



## QUAIL COMMERCE CENTER

3201 QUAIL SPRINGS PKWY, OKLAHOMA CITY, OK 73134



TRE DUPUY  
tdupuy@priceedwards.com  
O: 405.239.1210

IAN SELF  
iself@priceedwards.com  
O: 405.239.1271