

For Lease

3324 French Park Drive, Suite D, Edmond, OK 73034



OFFERING SUMMARY

Lease Rate: \$1,175 per month
3% annual increase

Building Size: +/-800 RSF

Class: B

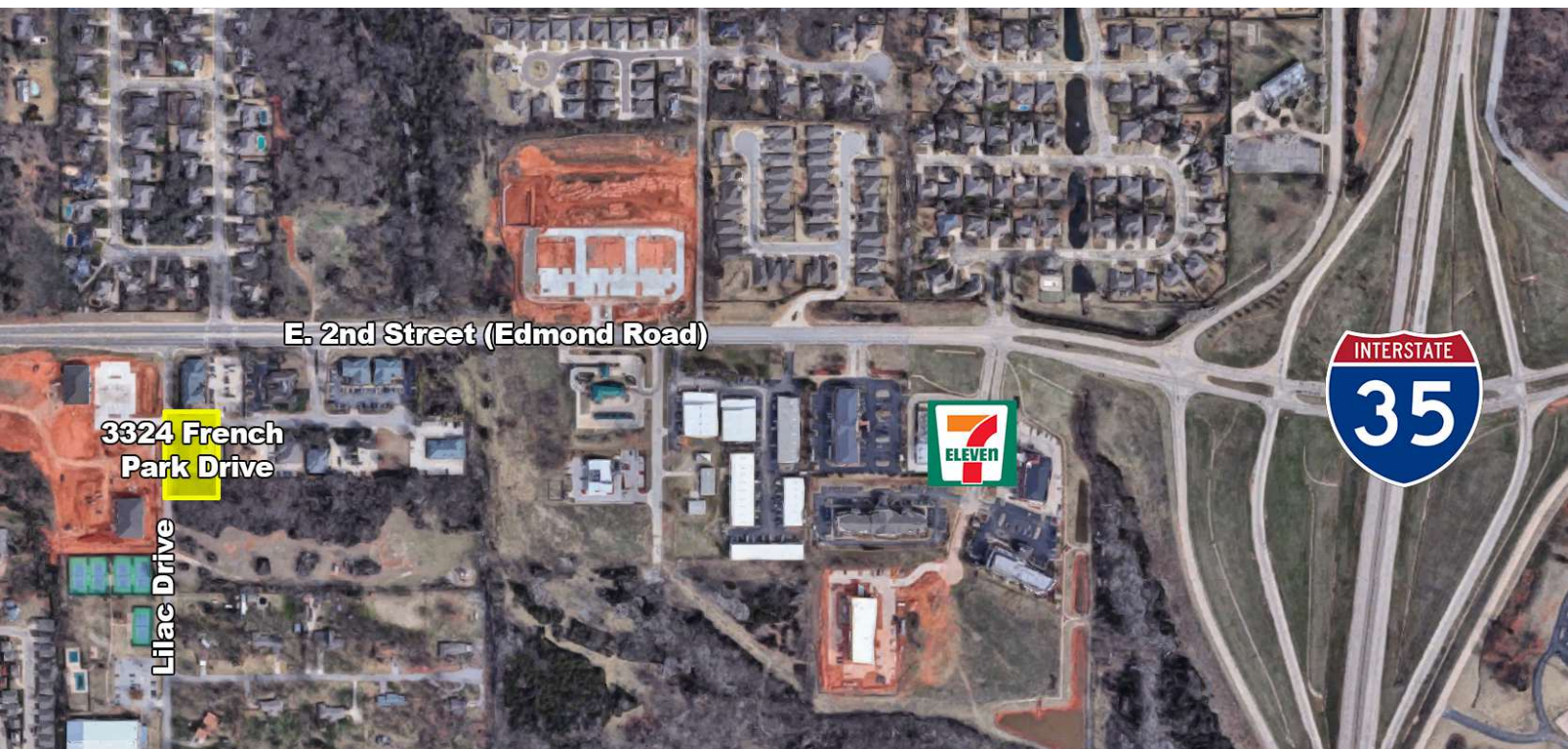
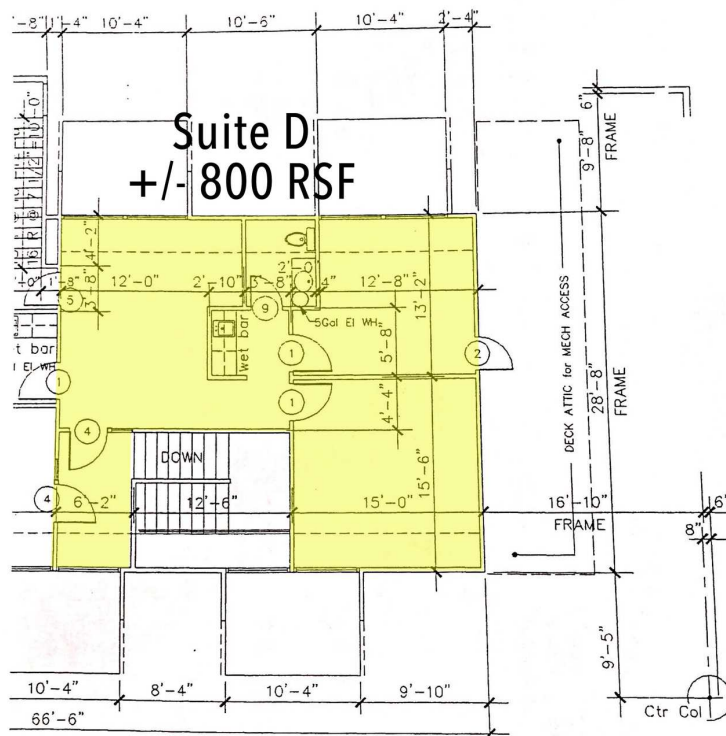
LOCATION OVERVIEW

Located in East Edmond; French Park is on the south side of E. 2nd Street which is located 3/4 mile west of I-35.

PROPERTY HIGHLIGHTS

- Two Offices & Reception Area
- Coffee Bar with Sink
- Ample On-Site Parking
- Ready for Immediate Occupancy
- Locally Owned and Managed
- Includes Normal Utilities, Janitorial & Maintenance
- Tenant Pays Internet/Phone

TOM FIELDS
405.239.1205
tfields@priceedwards.com
priceedwards.com



TOM FIELDS
405.239.1205
tfields@priceedwards.com
priceedwards.com

The information contained herein is from sources deemed reliable. No representation is made to the accuracy herein. Photos herein are the property of their respective owners, and use of them without express written consent of the owner is prohibited.