

For Lease

3325 French Park Drive, Edmond, OK 73034



OFFERING SUMMARY

Lease Rate: \$1,000 per month

Available SF: +/-900 SF

Market: Edmond

Class: B

LOCATION OVERVIEW

Located in East Edmond; French Park is on the south side of E. 2nd Street which is located 3/4 mile west of I-35.

PROPERTY HIGHLIGHTS

- Ample on-site parking
- Executive office space
- Ready for Immediate Occupancy
- Locally owned and managed
- Rent increases 3% annually
- Includes normal utilities, janitorial & maintenance.
- Tenant pays internet/phone

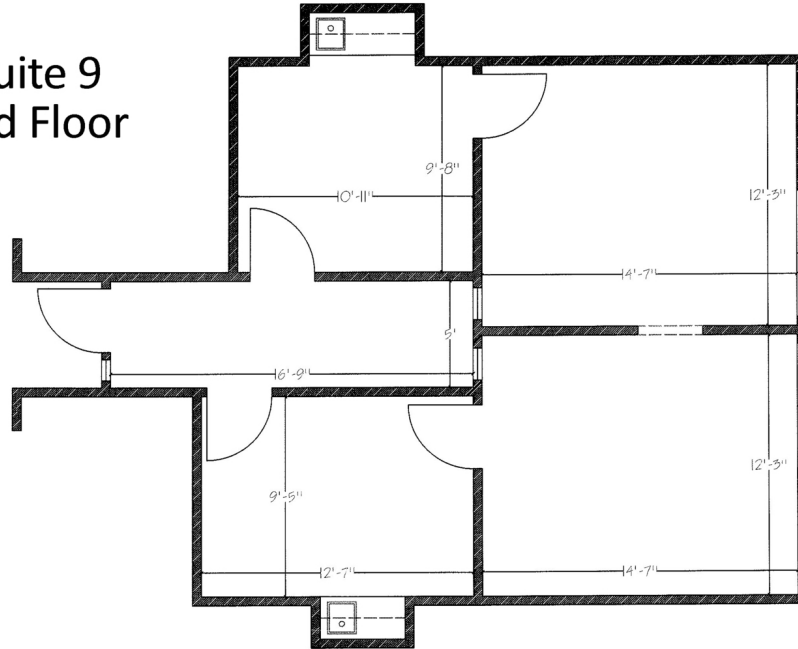
TOM FIELDS
405.239.1205
tfields@priceedwards.com
priceedwards.com

The information above has been obtained from sources believe reliable. While we do not doubt its accuracy, we have not verified it and make no guarantee, warranty, or representation about it. You and your legal and technical advisors should conduct a careful, independent investigation of the property to determine to your satisfaction to the suitability of the property for your needs.

For Lease

3325 French Park Drive, Edmond, OK 73034

Suite 9
2nd Floor



TOM FIELDS
405.239.1205
tfields@priceedwards.com
priceedwards.com

The information above has been obtained from sources believe reliable. While we do not doubt its accuracy, we have not verified it and make no guarantee, warranty, or representation about it. You and your legal and technical advisors should conduct a careful, independent investigation of the property to determine to your satisfaction to the suitability of the property for your needs.