



## OFFERING SUMMARY

Lease Rate: \$999.00 SF/yr  
3% annual increases

Available SF: ±950 RSF

Class: B

## PROPERTY OVERVIEW

Located in East Edmond; French Park is on the south side of E. 2nd Street which is located 3/4 mile west of I-35.

## PROPERTY HIGHLIGHTS

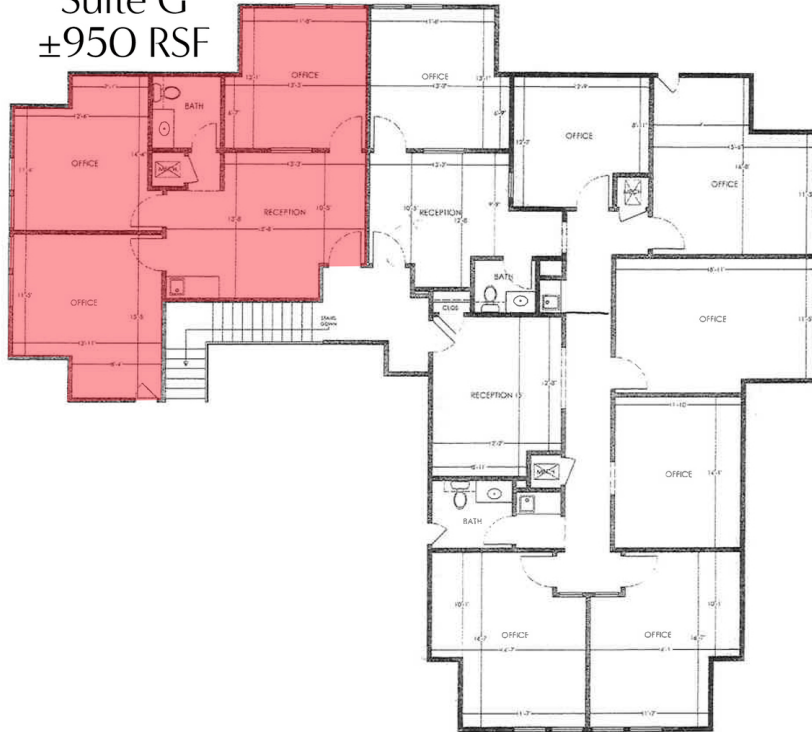
- Includes normal utilities, janitorial & maintenance
- Wet bar
- Private restroom
- Ample on-site parking
- Executive office space
- Locally owned and managed
- Tenant pays internet/phone

**TOM FIELDS**  
405.239.1205  
tfields@priceedwards.com  
priceedwards.com

# Office Space For Lease

3501 French Park Drive, Edmond, OK 73034

Suite G  
±950 RSF



**TOM FIELDS**  
405.239.1205  
tfields@priceedwards.com  
priceedwards.com