

Office Space For Lease

3501 French Park Drive, Edmond, OK 73034



OFFERING SUMMARY

Lease Rate: \$1,270 /mo
3% annual increases

Available SF: ±950 RSF

Class: B

PROPERTY OVERVIEW

Located in East Edmond; French Park is on the south side of E. 2nd Street which is located 3/4 mile west of I-35.

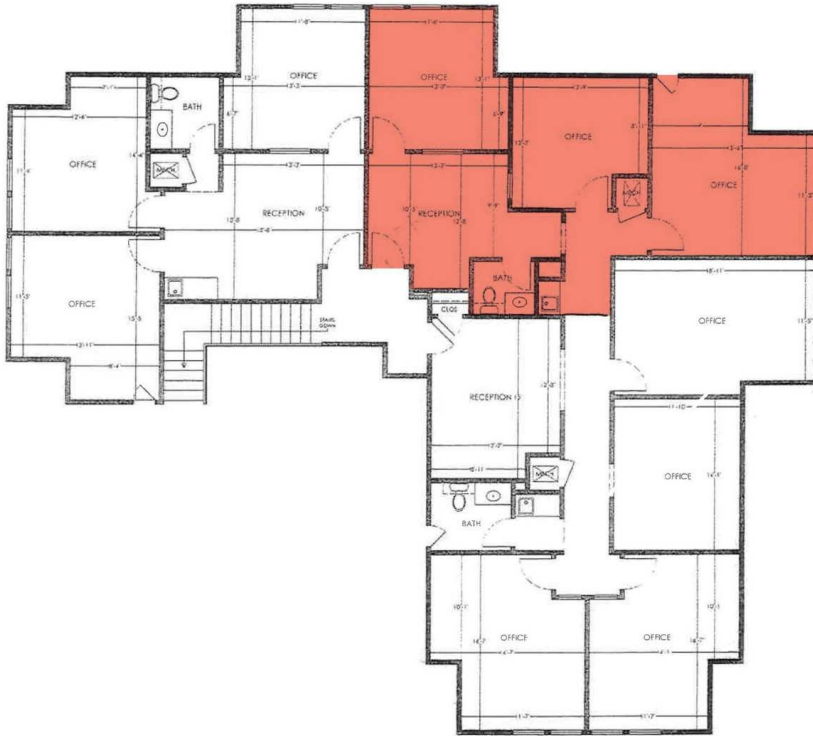
PROPERTY HIGHLIGHTS

- Includes normal utilities, janitorial & maintenance
- Wet bar
- Private restroom
- Ample on-site parking
- Executive office space
- Locally owned and managed
- Tenant pays internet/phone

TOM FIELDS
405.239.1205
tfields@priceedwards.com
priceedwards.com

Office Space For Lease

3501 French Park Drive, Edmond, OK 73034



SUITE F

±950 SF | \$1,270/mo

3% annual Increases



TOM FIELDS
405.239.1205
tfields@priceedwards.com
priceedwards.com