

Office Property for Lease

409 NE 28th Street, Oklahoma City, OK 73105



BUILDING PROFILE

Available SF:	2,000 - 43,200 SF
Building Size:	43,200 SF (3 Stories)
Lease Rate:	\$12.00 SF/YR
Lease Type:	Full-Service
Year Built:	1983
Submarket:	North

PROPERTY OVERVIEW

- Excellent access to I-235
- Located within a half-mile of State Capitol
- Newly upgraded mechanical systems
- Newly replaced windows throughout building
- After-hours secured access
- Large floor plates with minimal obstructions for wide range of office layouts

TRE DUPUY
405.843.7474
tdupuy@pricedwards.com
pricedwards.com

CODY BEAT
405.239.1235
cbeat@pricedwards.com
pricedwards.com

Office Property for Lease

409 NE 28th Street, Oklahoma City, OK 73105

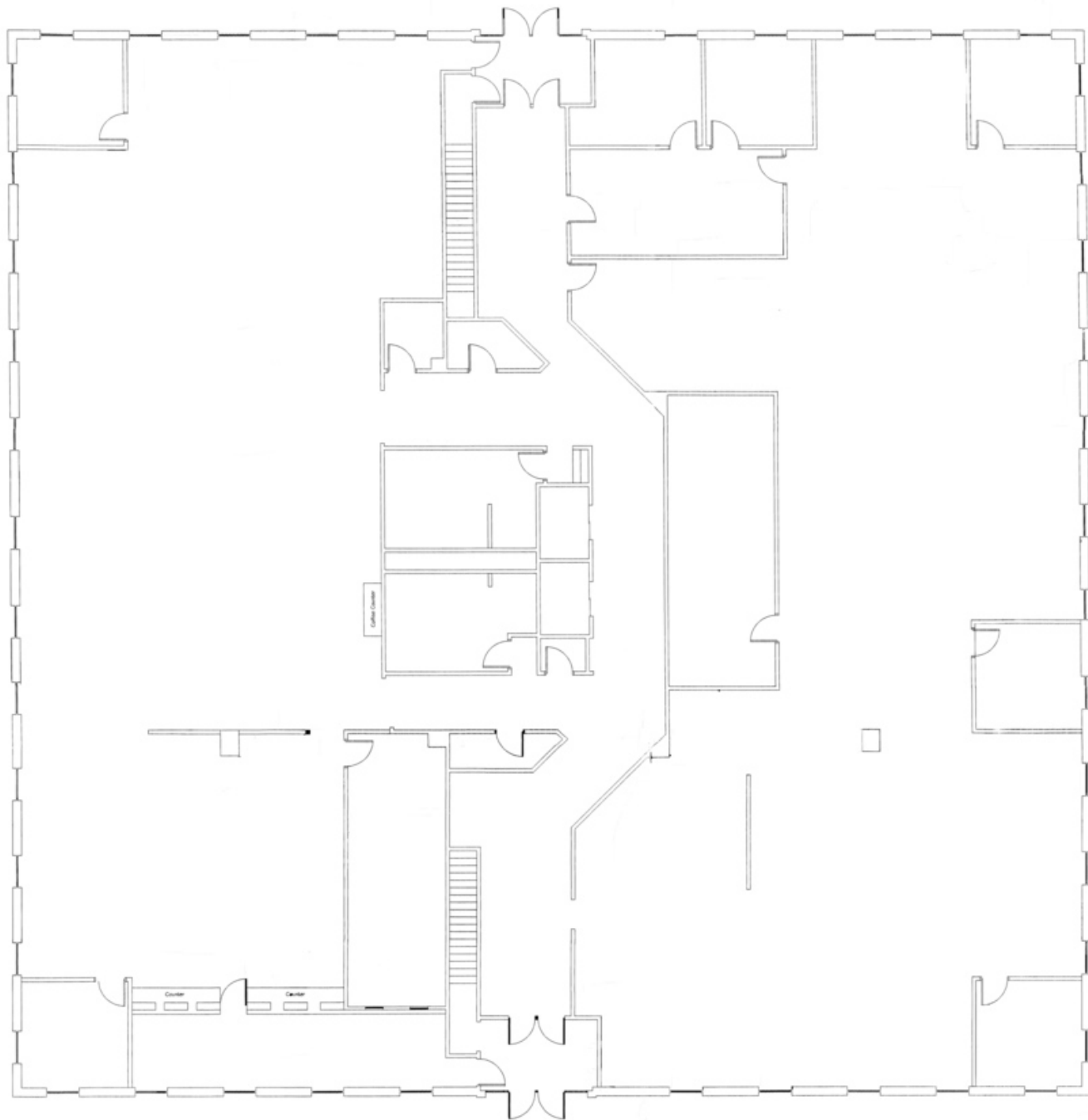


TRE DUPUY
405.843.7474
tdupuy@pricedwards.com
pricedwards.com

CODY BEAT
405.239.1235
cbeat@pricedwards.com
pricedwards.com

Office Property for Lease

409 NE 28th Street, Oklahoma City, OK 73105



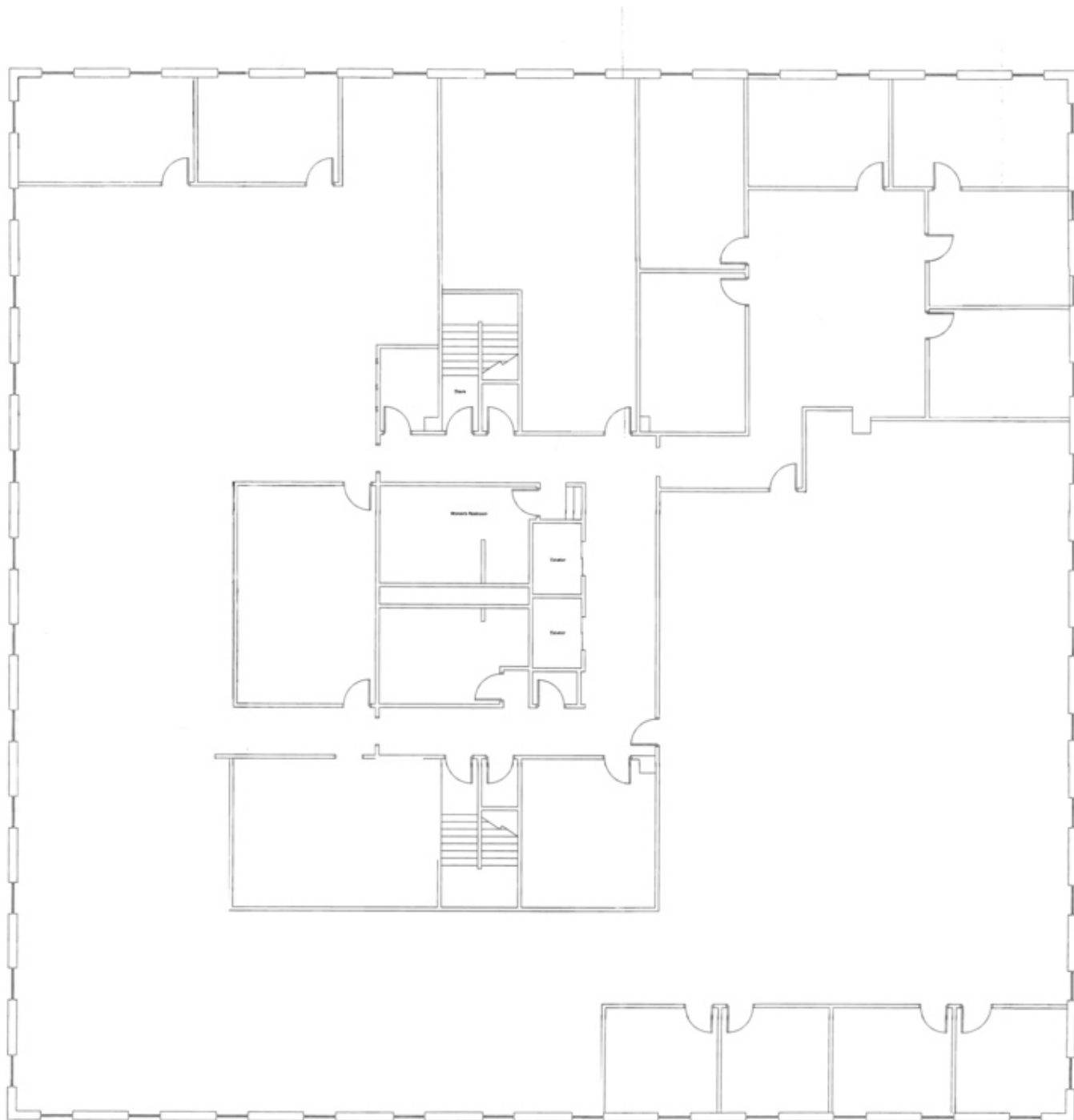
First Floor

TRE DUPUY
405.843.7474
tdupuy@pricedwards.com
pricedwards.com

CODY BEAT
405.239.1235
cbeat@pricedwards.com
pricedwards.com

Office Property for Lease

409 NE 28th Street, Oklahoma City, OK 73105



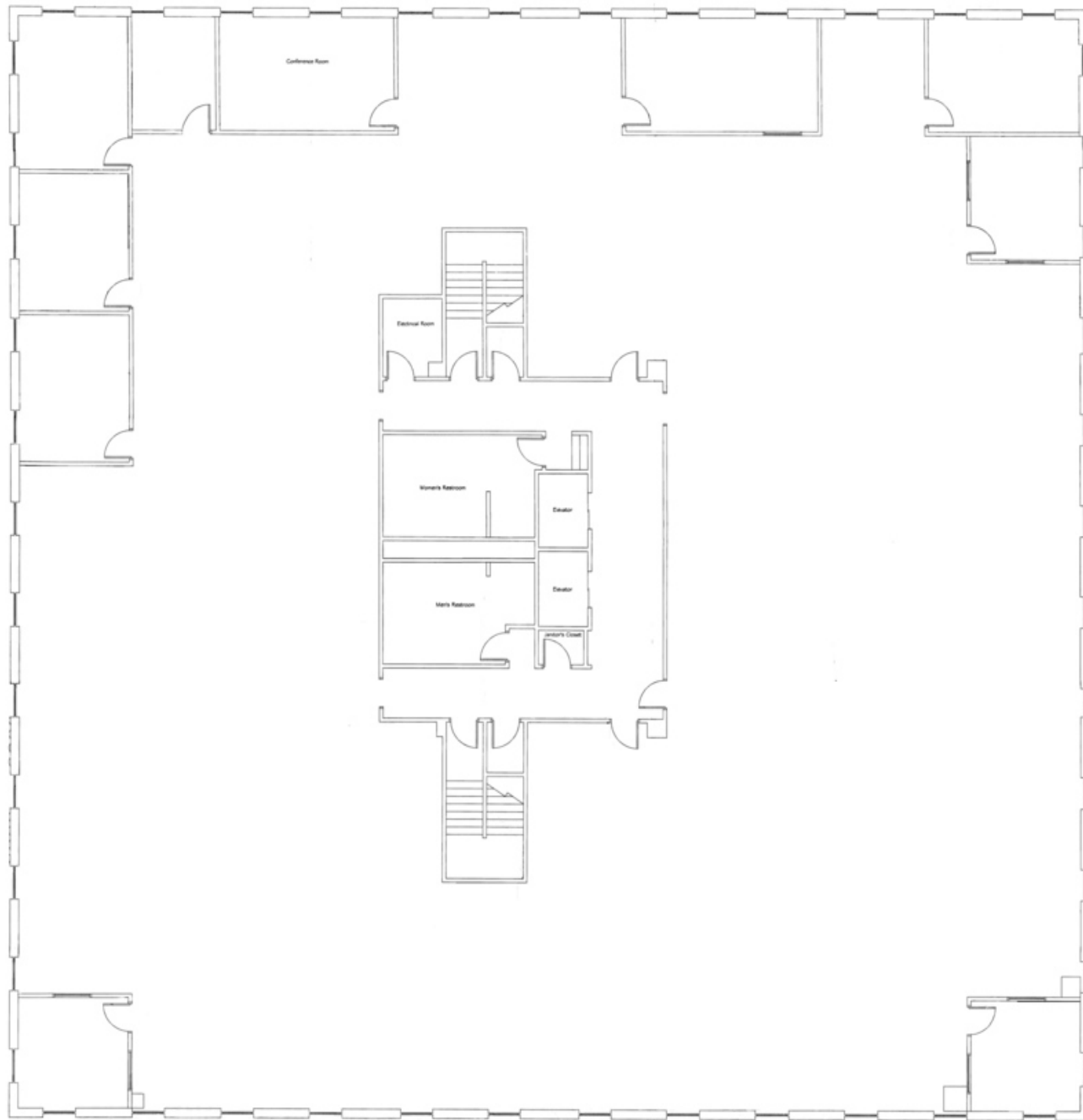
Second Floor

TRE DUPUY
405.843.7474
tdupuy@priceedwards.com
priceedwards.com

CODY BEAT
405.239.1235
cbeat@priceedwards.com
priceedwards.com

Office Property for Lease

409 NE 28th Street, Oklahoma City, OK 73105



Third Floor

TRE DUPUY
405.843.7474
tdupuy@priceedwards.com
priceedwards.com

CODY BEAT
405.239.1235
cbeat@priceedwards.com
priceedwards.com