

Office Space for Lease

4300 Charter Avenue, Oklahoma City, OK 73108



OFFICE SPACE NOW AVAILABLE

Lease Rate:	\$9.00 SF/yr (MG)
Available SF:	4,769 SF
Building Size:	41,713 SF
Overhead Door:	1 grade level 10'X12'
Private Offices:	12

PROPERTY OVERVIEW

The suite boasts a large amount of updated office space with twelve private offices, conference room, and kitchen area.

Warehouse space provides great flexibility for shipping and receiving.

Tenant pays increases over base year taxes and insurance plus CAM estimated at \$600/month for the initial lease calendar year.

LOCATION OVERVIEW

The property is located in Metropolitan Industrial Park, which is situated just east of Meridian Avenue and less than one mile south of I-40.

CHRIS ROBERTS
405.239.1236
croberts@priceedwards.com
priceedwards.com

CODY BEAT
405.239.1235
cbeat@priceedwards.com
priceedwards.com

Office Space for Lease

4300 Charter Avenue, Oklahoma City, OK 73108



Interior photograph of the suite



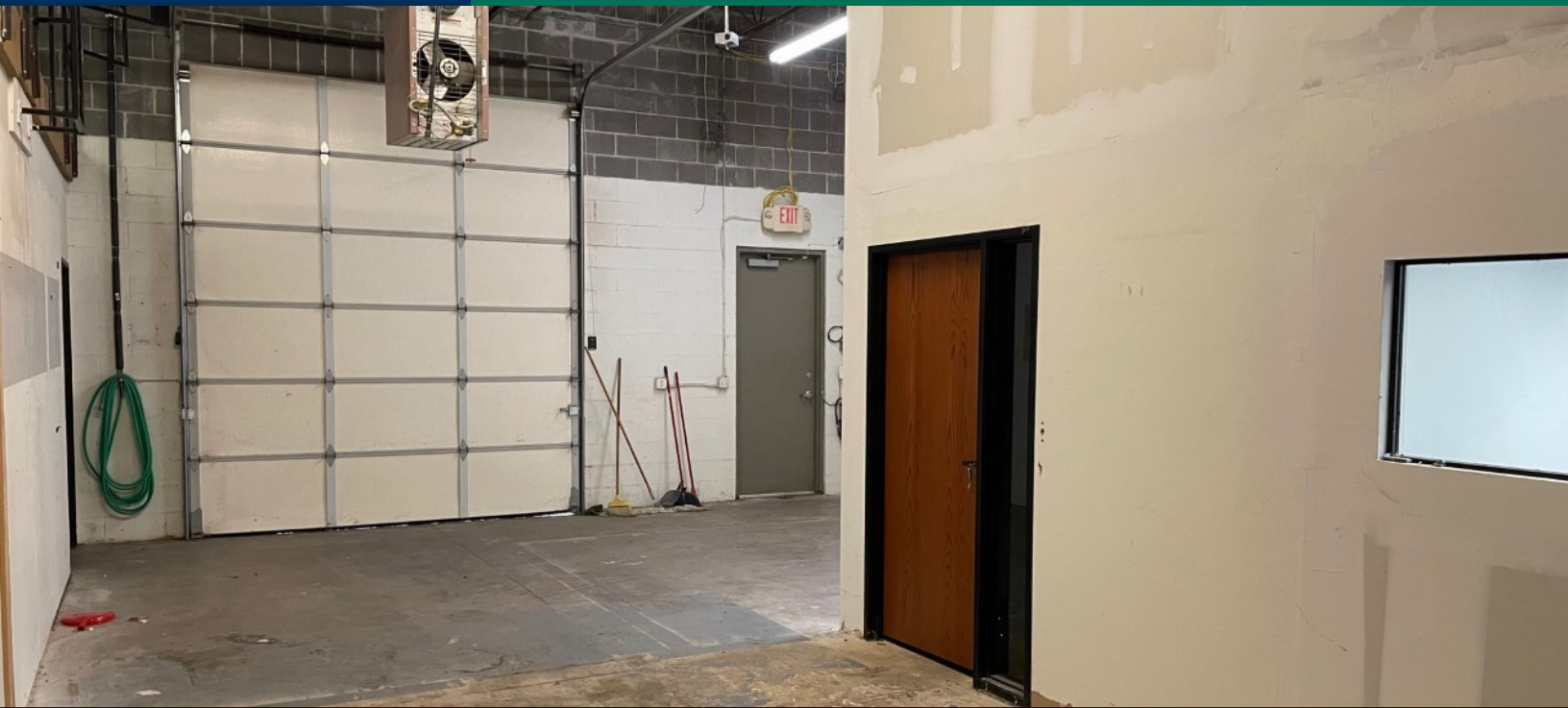
Conference Room

CHRIS ROBERTS
405.239.1236
croberts@priceedwards.com
priceedwards.com

CODY BEAT
405.239.1235
cbeat@priceedwards.com
priceedwards.com

Office Space for Lease

4300 Charter Avenue, Oklahoma City, OK 73108



Warehouse portion of the suite



Office

CHRIS ROBERTS
405.239.1236
croberts@pricedwards.com
pricedwards.com

CODY BEAT
405.239.1235
cbeat@pricedwards.com
pricedwards.com