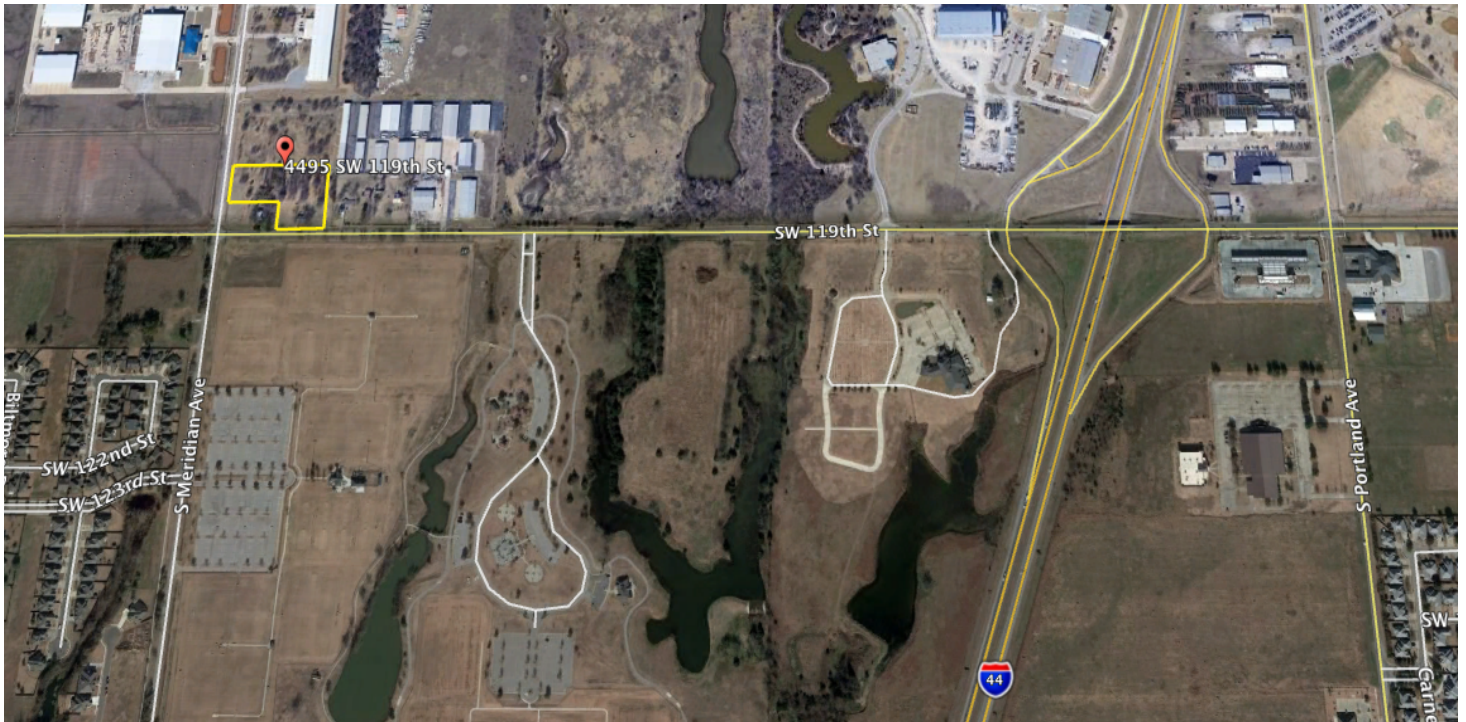


4495 SW 119TH ST.

Industrial Building For Lease



OFFERING SUMMARY

Available SF: 6,500 SF

Lease Rate: \$8,500 PM NNN

Lot Size: 2.95 Acres

Zoning: I-2

PROPERTY OVERVIEW

New 6,500 SF industrial building with 24' clear height, 5 ton bridge crane, drive through bays and 2.95 acres graveled/fenced yard. Estimated completion will be end of September.

PROPERTY HIGHLIGHTS

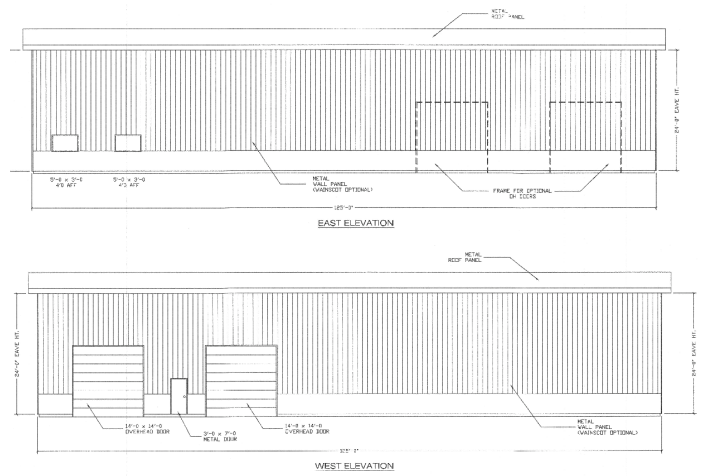
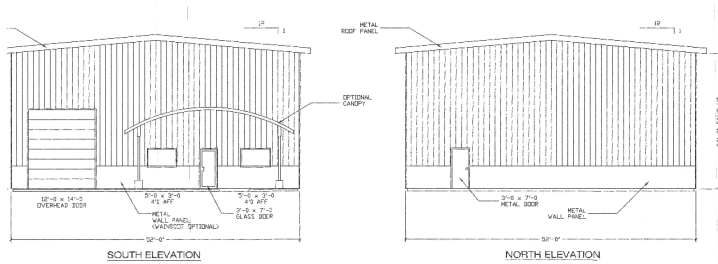
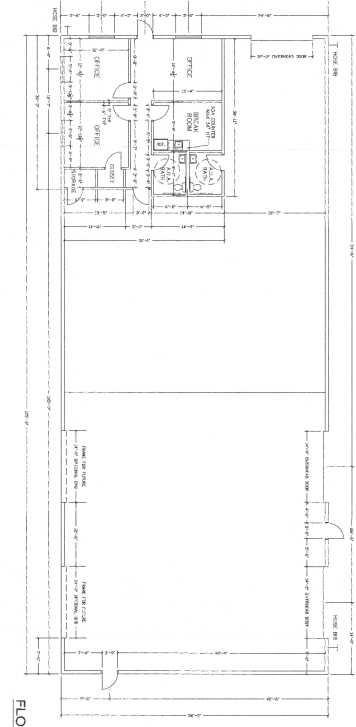
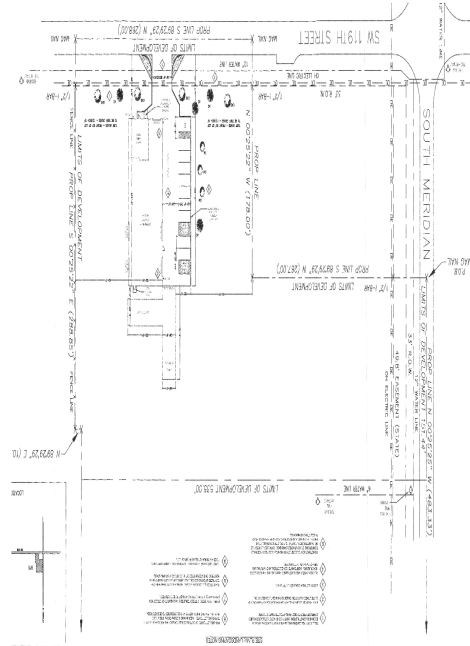
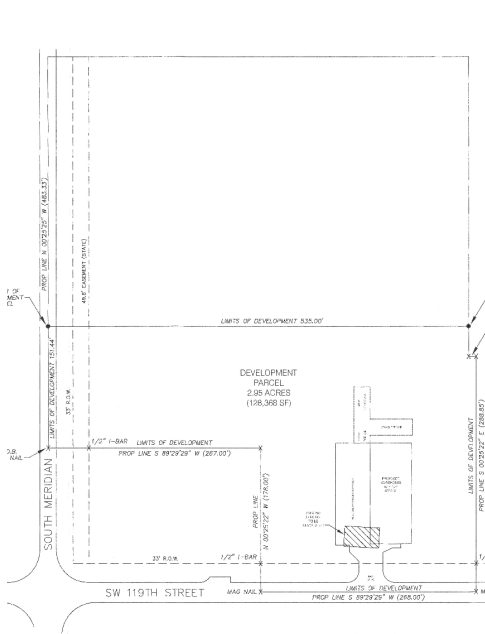
- 6,500 SF Building
- 24' Clear Height
- 5 Ton Bridge Crane
- 14' Overhead Doors
- 2 Sets of Drive Through Bays
- 942 SF of Office Space
- 2.95 Acres Fenced & Graveled

DANNY RIVERA

Industrial Specialist
drivera@priceedwards.com
405.408.5449
210 Park Ave, Suite 700, Oklahoma City, OK 73102
priceedwards.com

4495 SW 119TH ST.

Industrial Building For Lease



DANNY RIVERA
 Industrial Specialist
 drivera@priceedwards.com
 405.408.5449
 210 Park Ave, Suite 700, Oklahoma City, OK 73102
 priceedwards.com

The information above has been obtained from sources believe reliable. While we do not doubt its accuracy, we have not verified it and make no guarantee, warranty, or representation about it. You and your legal and technical advisors should conduct a careful, independent investigation of the property to determine to your satisfaction to the suitability of the property for your needs.