



PROPERTY SUMMARY

Available SF: 12,812 rsf

Lease Rate: \$22.00/SF/YR

Year Built: 2008

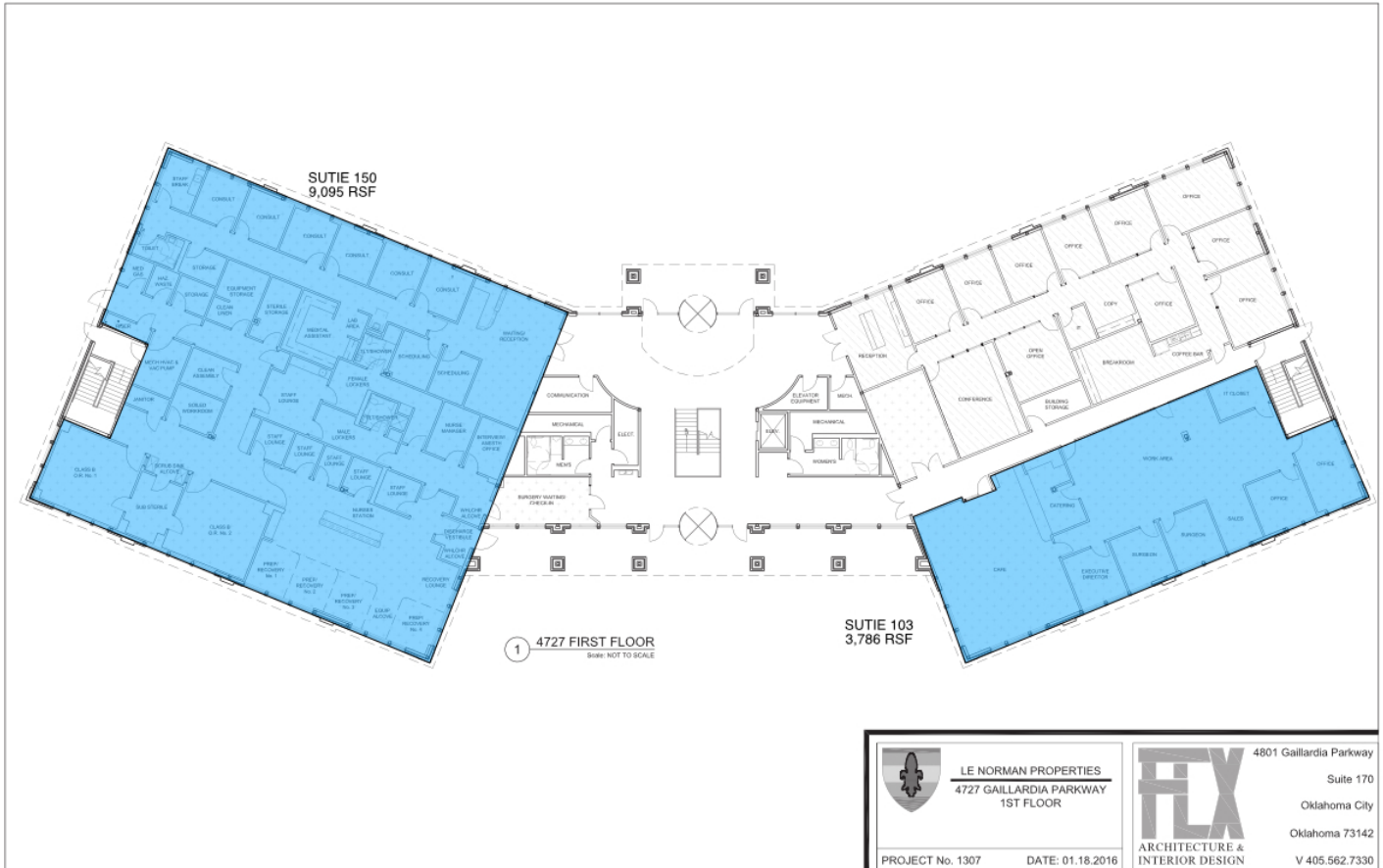
Building Size: 37,624 SF

PROPERTY OVERVIEW

The 4727 Gaillardia building is located in the Gaillardia Office Park, the most prestigious office development in Oklahoma City. 4727 Gaillardia is located less than 1 mile from several restaurants and hotels and is easily accessible from Memorial Road and the John Kilpatrick Turnpike. The building overlooks the Gaillardia Country Club, a 7,724-yard par 72, open links-style golf course anchored by a 55,000 square foot clubhouse recognized as one of the top 100 clubhouses in the world.

TRE DUPUY
405.239.1210
tdupuy@priceedwards.com
priceedwards.com

IAN SELF
405.239.1271
iself@priceedwards.com
priceedwards.com

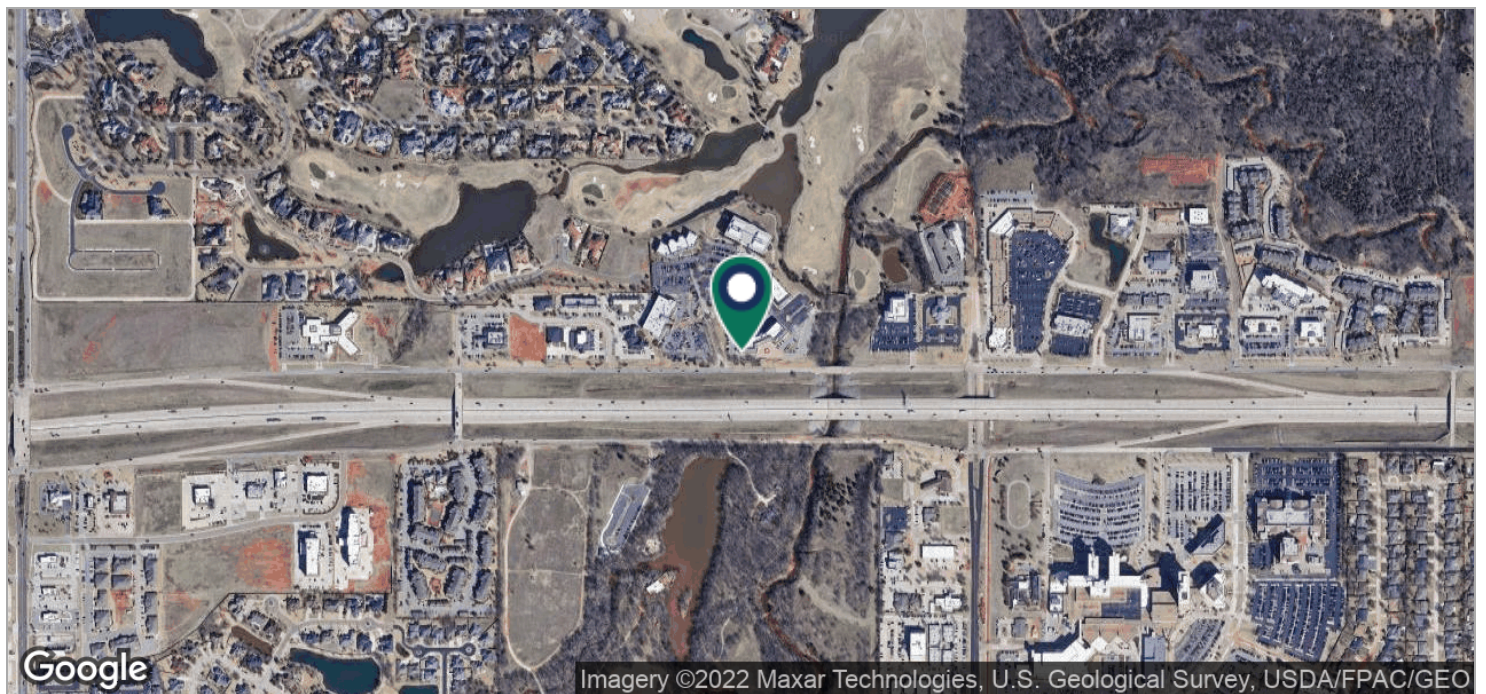
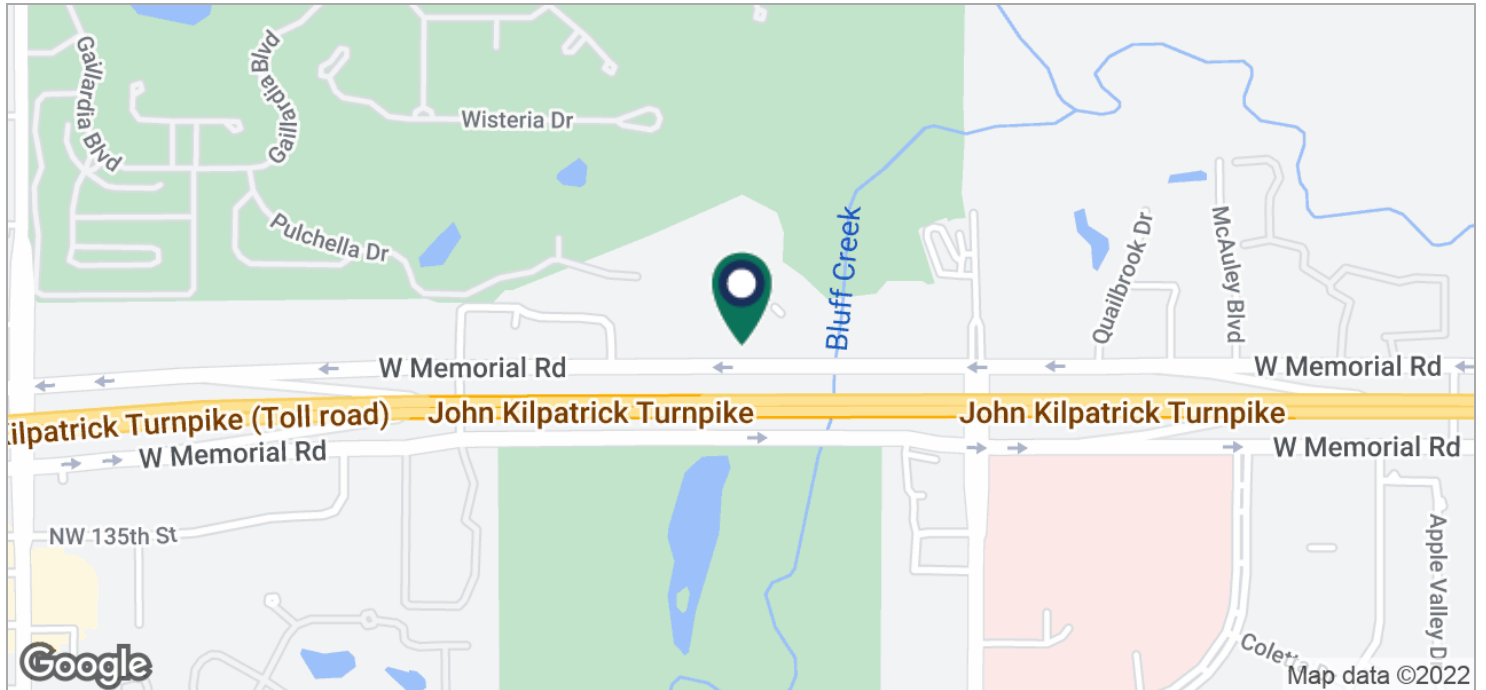


TRE DUPUY
405.239.1210
tdupuy@pricedwards.com
pricedwards.com

IAN SELF
405.239.1271
iself@pricedwards.com
pricedwards.com

4727 Gaillardia

4727 Gaillardia Parkway, Oklahoma City, OK 73142



TRE DUPUY
405.239.1210
tdupuy@priceedwards.com
priceedwards.com

IAN SELF
405.239.1271
iself@priceedwards.com
priceedwards.com