



OFFERING SUMMARY

Available SF: 4,292 SF

Lease Rate: \$24.00/SF/YR

Year Built: 2008

Building Size: 23,955 SF

PROPERTY OVERVIEW

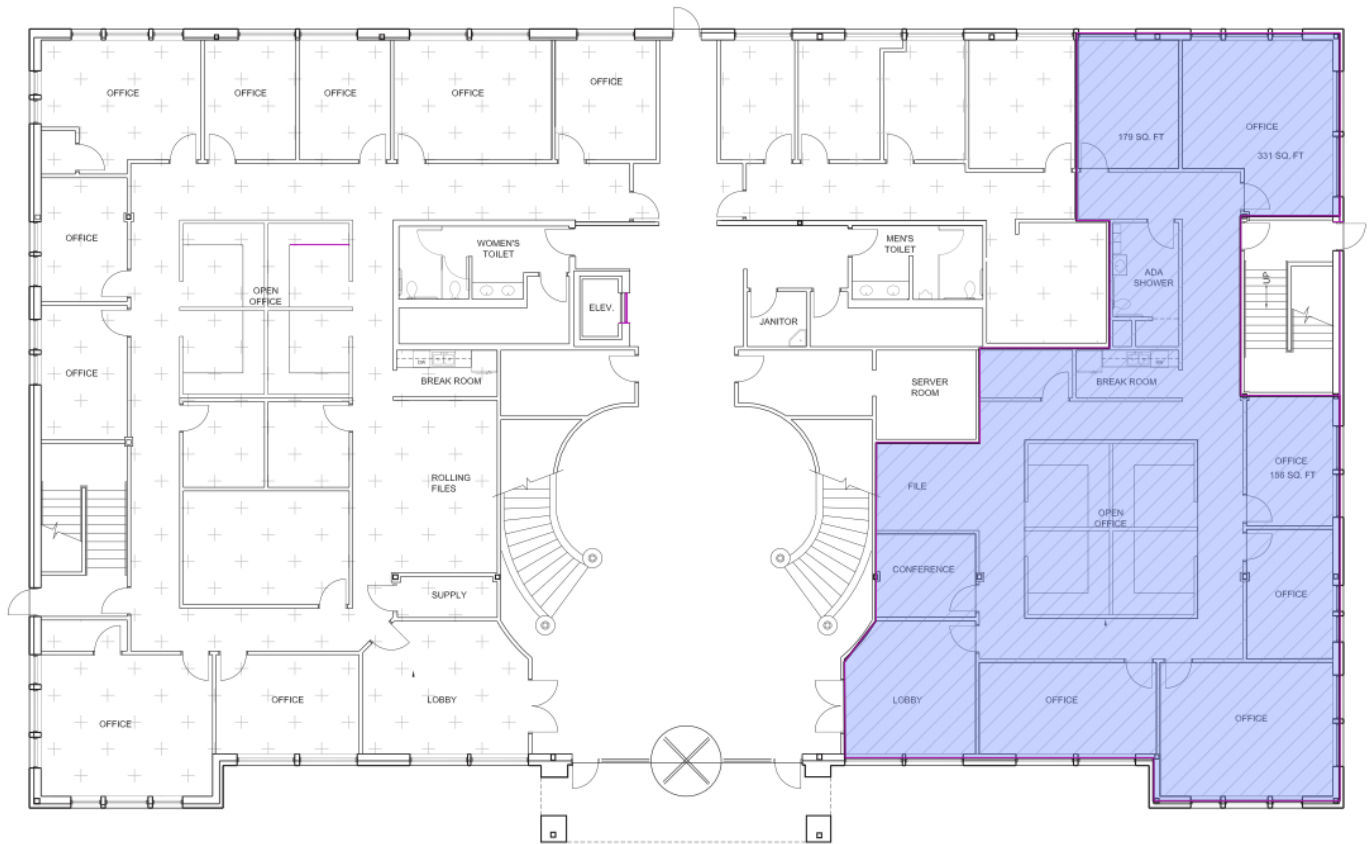
The 4747 Gaillardia building is located in the Gaillardia Office Park, the most prestigious office development in Oklahoma City. 4747 Gaillardia is located less than 1 mile from several restaurants, hotels, and is easily accessible from Memorial Road, as well as the John Kilpatrick Turnpike. The building overlooks the Gaillardia Country Club, a 7,724 yard par 72, open links style golf course, anchored by a 55,000 square foot clubhouse recognized as one of the top 100 clubhouses in the world. These spaces can be leased fully furnished, allowing for immediate occupancy. This will allow a company to make a stress-free transition into new space.

PROPERTY HIGHLIGHTS

- Furniture available as part of the lease package
- Nine-foot ceiling heights
- Ample surface parking
- Views of Gaillardia Golf Course
- Travertine floors

TRE DUPUY
405.843.7474
tdupuy@priceedwards.com
priceedwards.com

IAN SELF
405.239.1271
iself@priceedwards.com
priceedwards.com



1

SUITE 150
+/- 4,292 SF

TRE DUPUY
405.843.7474
tdupuy@priceedwards.com
priceedwards.com

IAN SELF
405.239.1271
iself@priceedwards.com
priceedwards.com

4747 Gaillardia

4747 Gaillardia Parkway, Oklahoma City, OK 73142



TRE DUPUY
405.843.7474
tdupuy@priceedwards.com
priceedwards.com

IAN SELF
405.239.1271
iself@priceedwards.com
priceedwards.com

4747 Gaillardia

4747 Gaillardia Parkway, Oklahoma City, OK 73142



TRE DUPUY
405.843.7474
tdupuy@priceedwards.com
priceedwards.com

IAN SELF
405.239.1271
iself@priceedwards.com
priceedwards.com