

4747 GAILLARDIA

LEASE SUMMARY



OFFERING SUMMARY

Available SF: 4,292 SF

Lease Rate: \$24.00/SF/YR

Year Built: 2008

Building Size: 23,955 SF

PROPERTY OVERVIEW

The 4747 Gaillardia building is located in the Gaillardia Office Park, the most prestigious office development in Oklahoma City. 4747 Gaillardia is located less than 1 mile from several restaurants, hotels, and is easily accessible from Memorial Road, as well as the John Kilpatrick Turnpike. The building overlooks the Gaillardia Country Club, a 7,724 yard par 72, open links style golf course, anchored by a 55,000 square foot clubhouse recognized as one of the top 100 clubhouses in the world. These spaces can be leased fully furnished, allowing for immediate occupancy. This will allow a company to make a stress-free transition into new space.

PROPERTY HIGHLIGHTS

- Furniture available as part of the lease package
- Nine-foot ceiling heights
- Ample surface parking
- Views of Gaillardia Golf Course
- Travertine floors

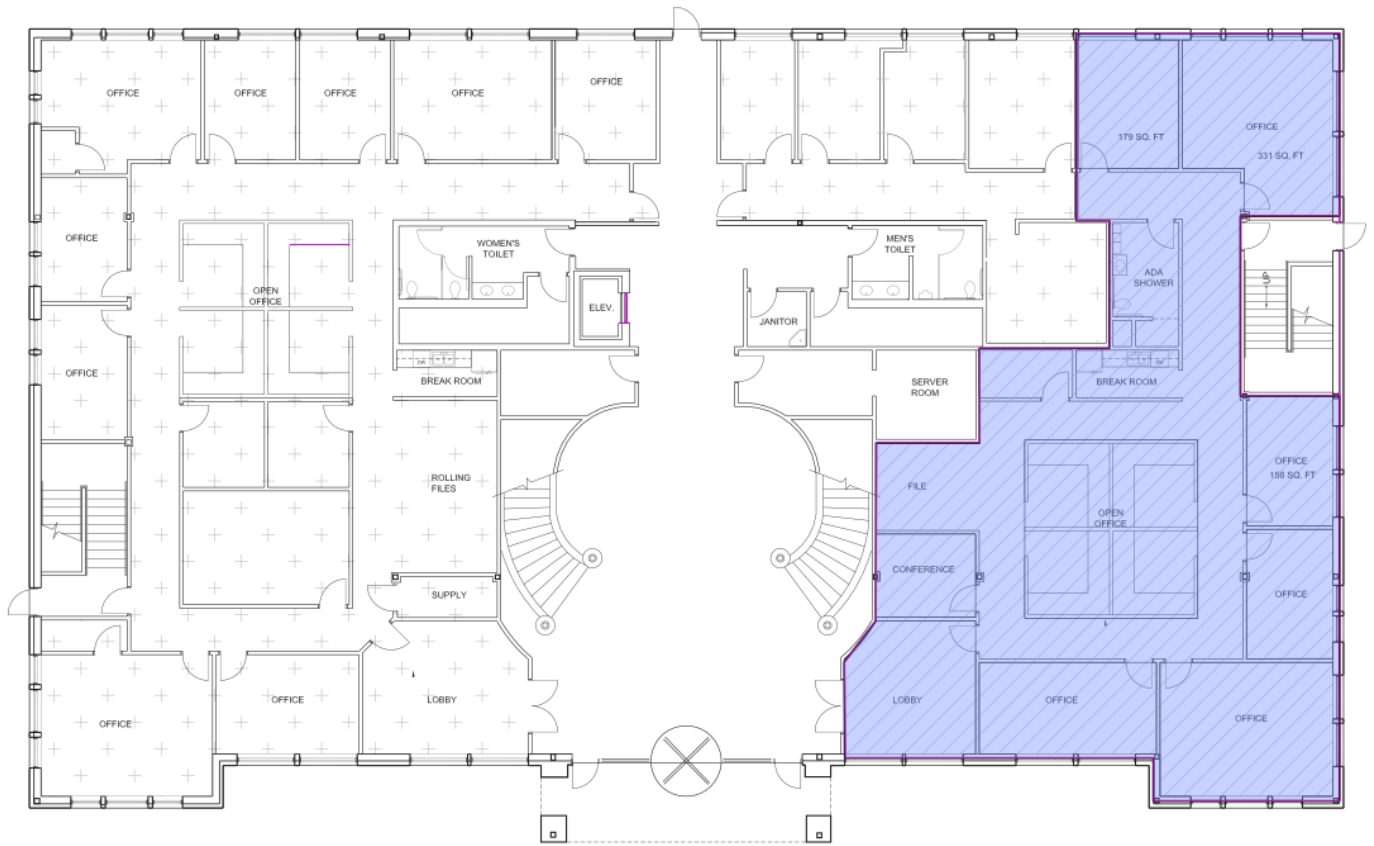
For more information please contact:

TRE DUPUY

tdupuy@priceedwards.com
405.843.7474

4747 GAILLARDIA

FLOOR PLAN: SUITE 150



For more information please contact:

TRE DUPUY

tdupuy@priceedwards.com
405.843.7474

4747 GAILLARDIA

ADDITIONAL PHOTOS



For more information please contact:

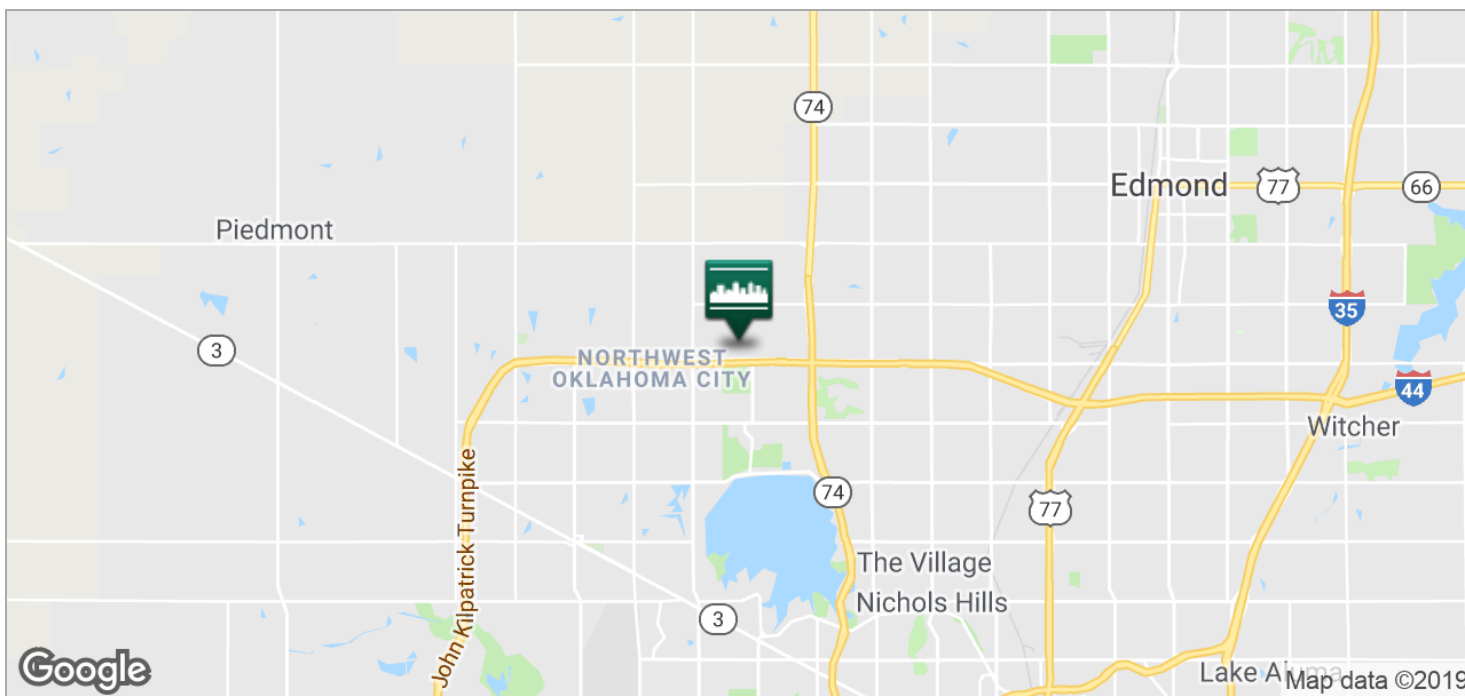
TRE DUPUY

tdupuy@priceedwards.com

405.843.7474

4747 GAILLARDIA

LOCATION MAPS



For more information please contact:

TRE DUPUY

tdupuy@priceedwards.com
405.843.7474