



LEASE DETAILS

Available SF: 12,607 RSF

Lease Rate: \$23.50/SF/Year

Building Size: 74,432

Market: Memorial Corridor

PROPERTY OVERVIEW

4801 Gaillardia is designed to complement the Normandy style of the adjacent Gaillardia Country Club. The lower portions of the building are clad in natural stone. The use of full-height glass and punched windows give the exterior a multi-dimensional presence. The interior is highlighted by a two-story atrium lobby featuring granite floors and walls clad in travertine and dark natural woods which repeat in the upper floor elevator lobbies. The building avails the tenant with views of the golf course on three of its four sides.

PROPERTY HIGHLIGHTS

- Close to numerous restaurants and shopping centers
- 9' ceilings
- Fiber-optic communications
- On-site building engineer
- Golf Course views

TRE DUPUY
405.239.1210
tdupuy@priceedwards.com
priceedwards.com

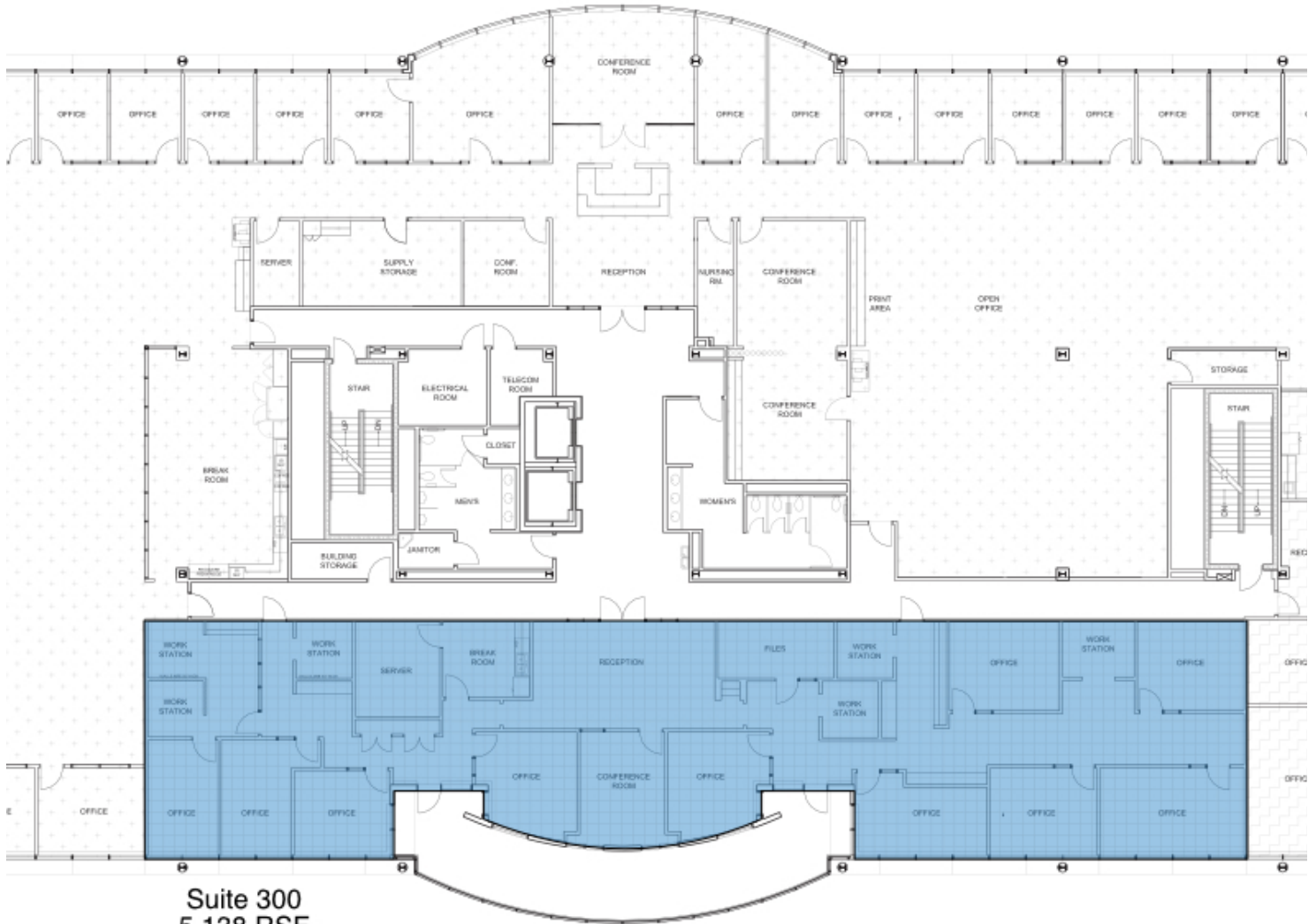
IAN SELF
405.239.1271
iself@priceedwards.com
priceedwards.com



Suite 201
7,469 RSF


TRE DUPUY
405.239.1210
tdupuy@priceedwards.com
priceedwards.com

IAN SELF
405.239.1271
iself@priceedwards.com
priceedwards.com



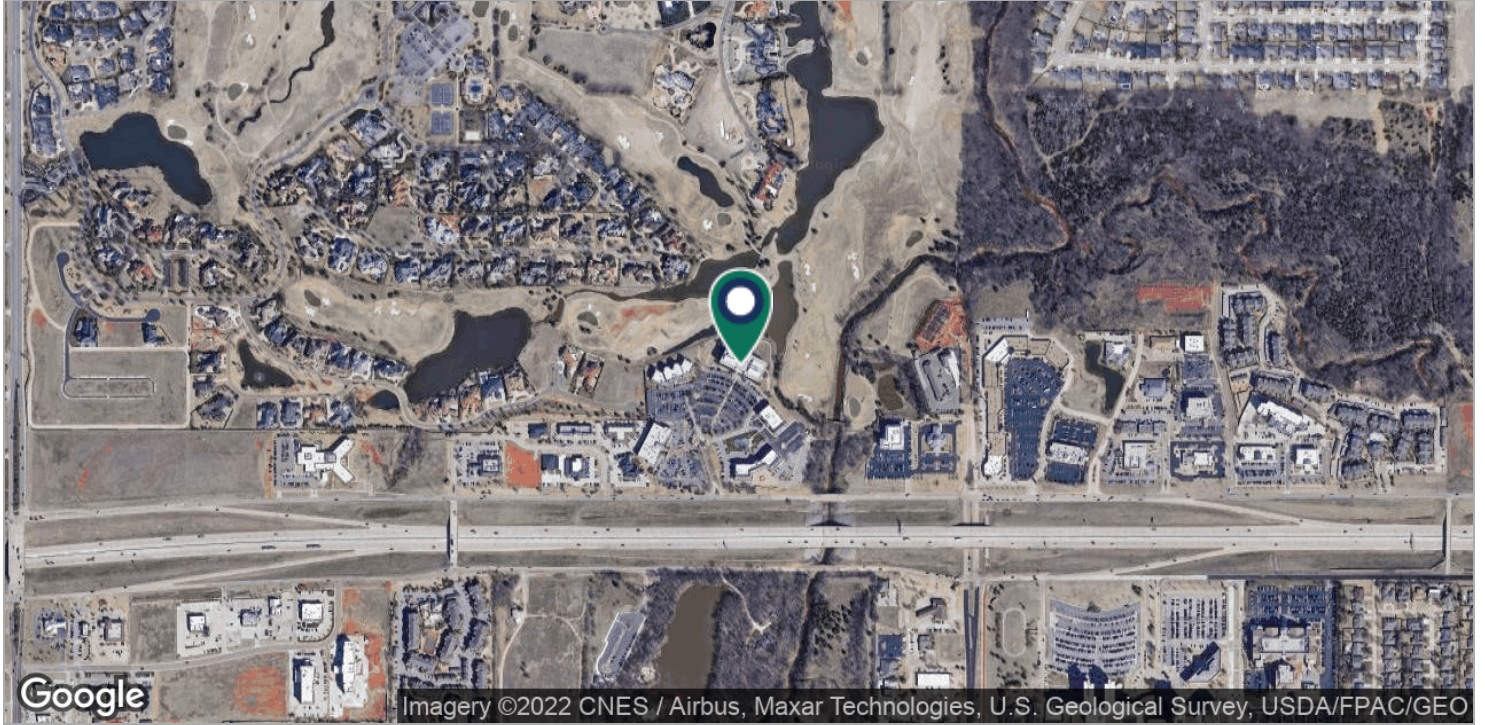
Suite 300
5,138 RSF

1
1'

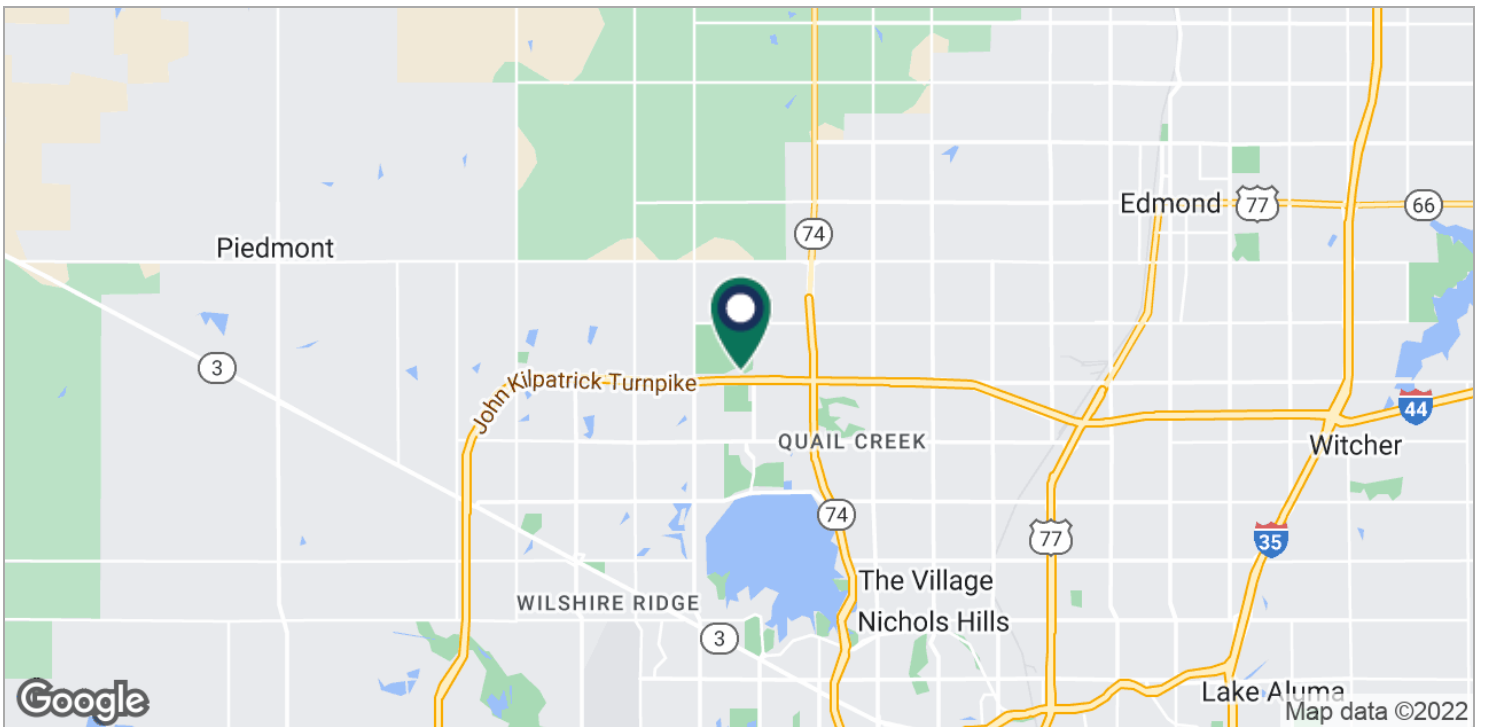
	LE NORMAN PROPERTIES 4801 GAILLARDIA PARKWAY		AR IN1
	PROJECT No. 1307	DATE: 09.08.2017	

TRE DUPUY
405.239.1210
tdupuy@priceedwards.com
priceedwards.com

IAN SELF
405.239.1271
iself@priceedwards.com
priceedwards.com



Imagery ©2022 CNES / Airbus, Maxar Technologies, U.S. Geological Survey, USDA/FPAC/GEO



TRE DUPUY
405.239.1210
tdupuy@priceedwards.com
priceedwards.com

IAN SELF
405.239.1271
iself@priceedwards.com
priceedwards.com