

4801 GAILLARDIA PARKWAY

OKLAHOMA CITY, OK 73142



2,414 - 7,469 SF FOR LEASE



Rate
\$23.50 / SF / YR



Conveniently
Located



Key Card
Access



Underground
Parking



On-Site
Engineer



Golf Course
Views



Flexible
Floorplan

TRE DUPUY

tdupuy@priceedwards.com
O: 405.239.1210 C: 405.412.3810

IAN SELF

iself@priceedwards.com
O: 405.239.1271

4801 GAILLARDIA PARKWAY

AVAILABLE SUITES



SUITE	SIZE	RATE
Suite 201	7,469 SF	\$23.50 SF/yr
Suite 300	5,408 SF	\$23.50 SF/yr
Suite 375	2,414 SF	\$23.50 SF/yr

4801 GAILLARDIA PARKWAY

OKLAHOMA CITY, OK 73142



Suite 201
7,469 RSF

TRE DUPUY

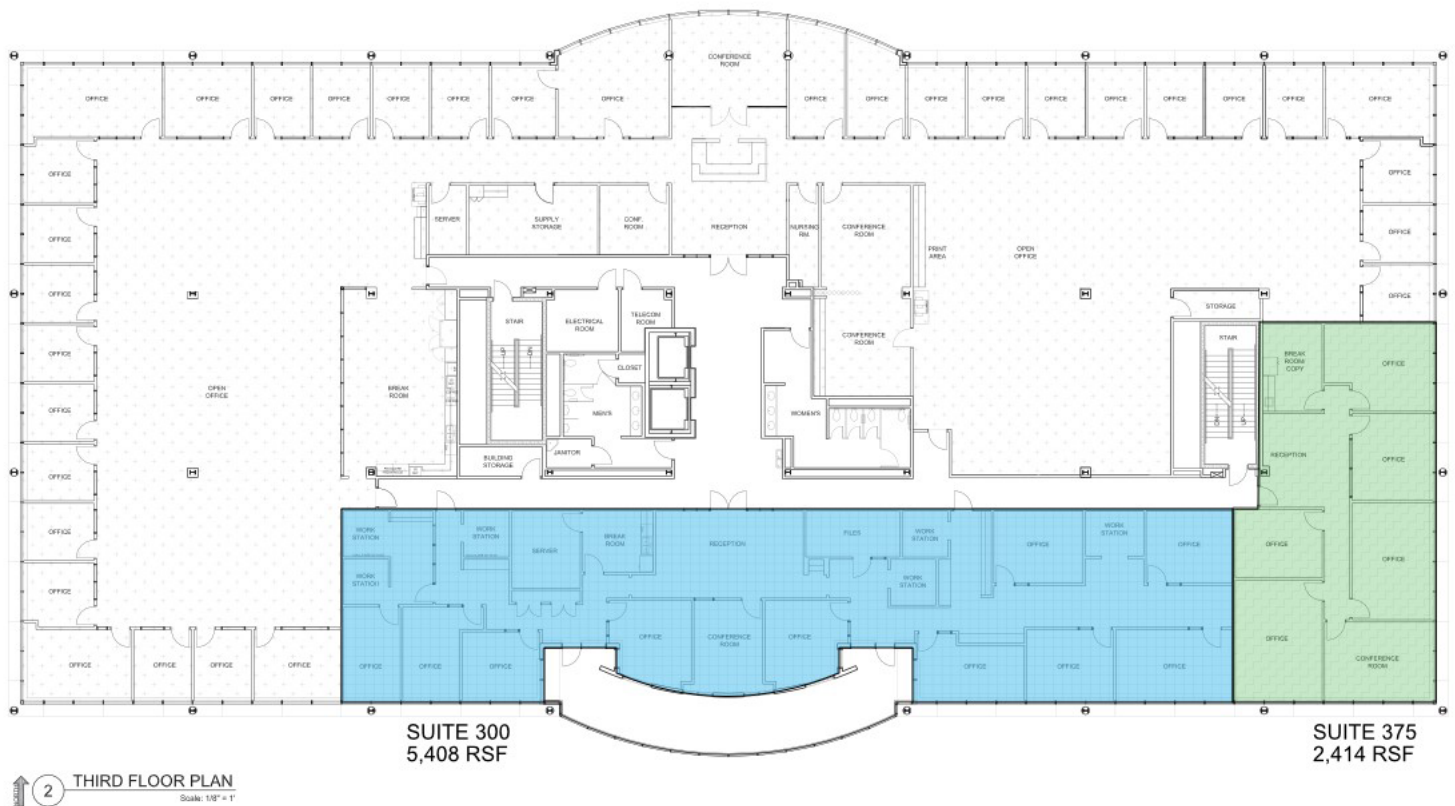
tdupuy@priceedwards.com
O: 405.239.1210 C: 405.412.3810

IAN SELF

iself@priceedwards.com
O: 405.239.1271

4801 GAILLARDIA PARKWAY

OKLAHOMA CITY, OK 73142



TRE DUPUY

tdupuy@priceedwards.com
O: 405.239.1210 C: 405.412.3810

IAN SELF

iself@priceedwards.com
O: 405.239.1271