

501 S COLTRANE RD

EDMOND, OK 73034



PROPERTY DESCRIPTION

Located just South of 2nd and Coltrane this building is in a booming part of town. This property features approximately 14 covered parking spaces. Great local ownership.

LOCATION DESCRIPTION

Located on Coltrane Street just south of 2nd Street in Edmond. One mile west of I-35.

OFFERING SUMMARY

Suite B:

±1,489 RSF
\$14.00 SF/yr
with 3% annual increases

Building Size:

±15,004 SF

Tenant pays utilities.

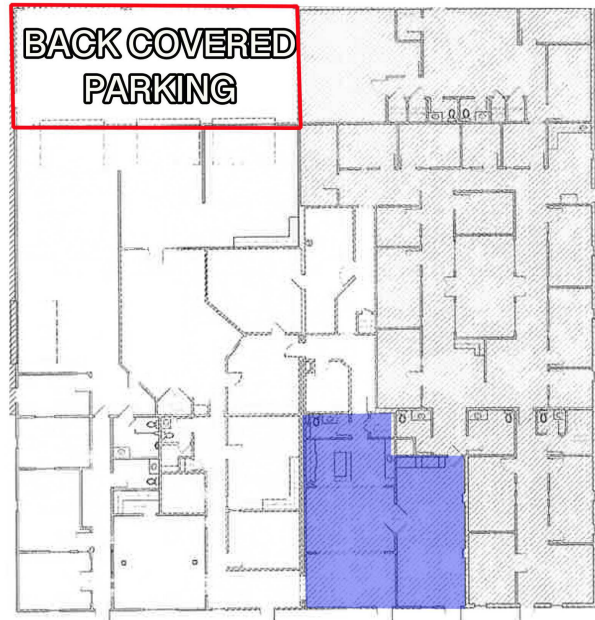
Landlord pays taxes, insurance, water, landscape maintenance and repairs

TOM FIELDS

tfields@priceedwards.com
O: 405.239.1205

501 S COLTRANE RD

EDMOND, OK 73034



SUITE B
±1,489 RSF
\$14 SF/YR



TOM FIELDS

tfields@priceedwards.com

O: 405.239.1205