



INDUSTRIAL SPACE NOW AVAILABLE

Building Size:	9,832 SF
Office Space	2,290 SF
Warehouse Space	7,592 SF
Lease Rate:	\$8,200/month (NNN)
Taxes/Insurance:	\$1,056/MO
Ceiling Height:	19' Sidewall, 21' Center
Overhead Doors:	2 grade level , 1 dock high
Zoning:	I-2

PROPERTY OVERVIEW

This property provides convenient access to the interstate system and Will Rogers Airport.

- 6 offices with windows
- Breakroom
- Full data wiring
- Shop/warehouse bathroom with shower
- 2 restrooms in office area
- 400 amp 3 phase power
- Infrared heat in shop/warehouse natural gas
- Air lines installed
- 2 grade level overhead doors - height & width - (South door 12' x 12') (West door 14' x 12')
- 1 dock high overhead door - 9' x 9'
- 1, 5 ton bridge crane
- 3, half ton jib cranes
- 15 Parking spots

LOCATION OVERVIEW

Located directly off of S MacArthur Boulevard and SW 21st Street.

TOM FIELDS
405.239.1205
tfields@pricedwards.com
pricedwards.com

Downtown OKC

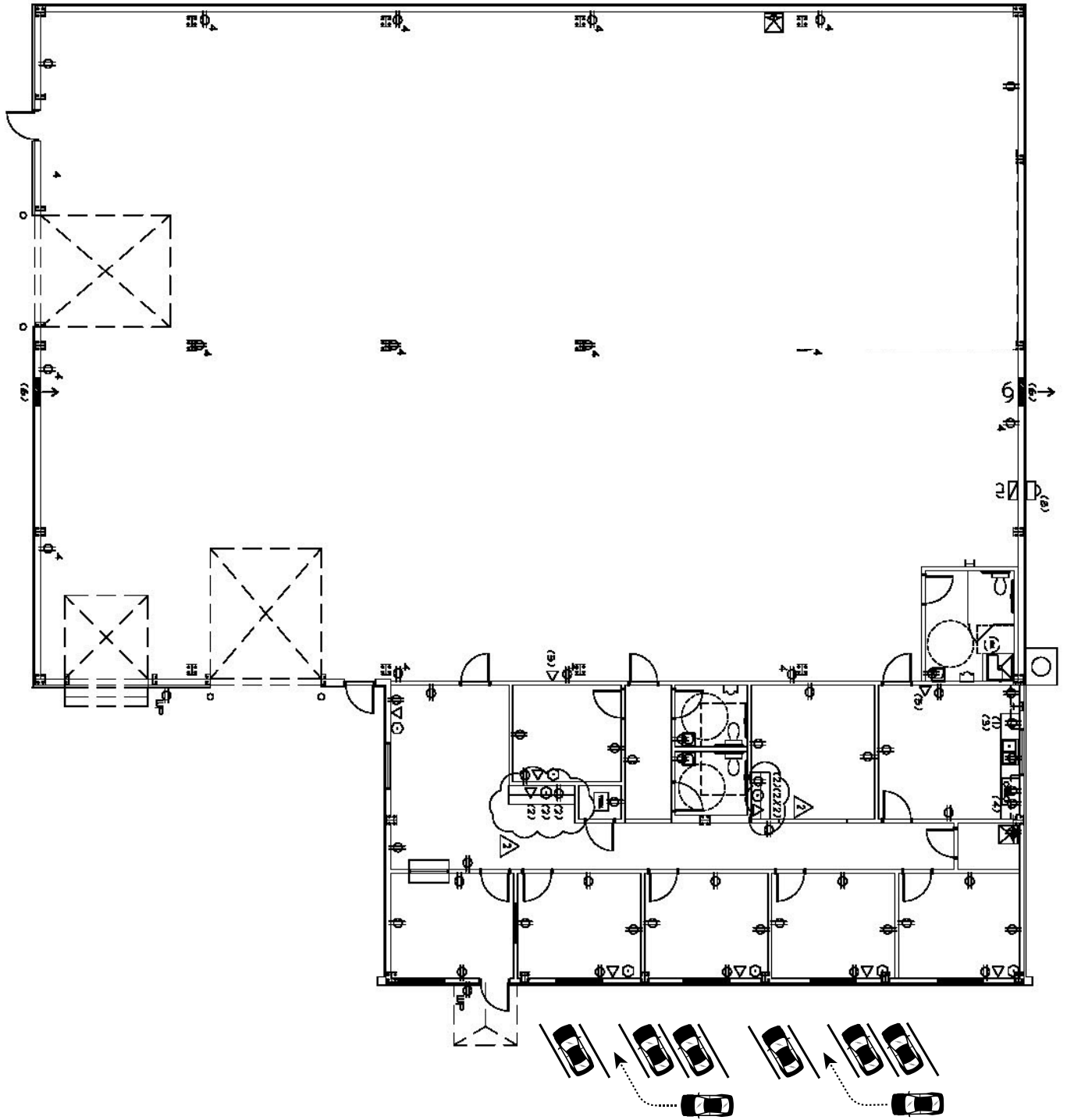
5817 SW 21st

SW 21st
S. MacArthur



TOM FIELDS
405.239.1205
tfields@pricedwards.com
pricedwards.com





PARKING