

6701 BROADWAY EXT.

Office Space For Lease



OFFERING SUMMARY

Available SF: 2,815 - 3,468 SF

Lease Rate: Negotiable

Building Size: 48,700 SF

Market: North

PROPERTY HIGHLIGHTS

- Directly facing Broadway Extension
- Inviting 4 story atrium and lobby
- Covered outdoor balcony for tenant's use
- Natural light from full height glass exterior windows
- One of a kind views of Broadway
- Excellent access to Wilshire Blvd. & 63rd St.
- Covered parking included
- Complete building renovation in 2014

TRE DUPUY

Office Specialist

tdupuy@priceedwards.com

405.843.7474

210 Park Ave, Suite 700, Oklahoma City, OK 73102

priceedwards.com

6701 BROADWAY EXT.

Available Spaces



LEASE TYPE | Full Service

TOTAL SPACE | 2,815 - 3,468 SF

LEASE TERM | Negotiable

LEASE RATE | Negotiable



SUITE	TENANT	SIZE (SF)	LEASE TYPE	LEASE RATE
Suite 300	Available	3,468 SF	Full Service	Negotiable
Suite 301	Available	2,815 SF	Full Service	Negotiable

TRE DUPUY

Office Specialist

tdupuy@priceedwards.com

405.843.7474

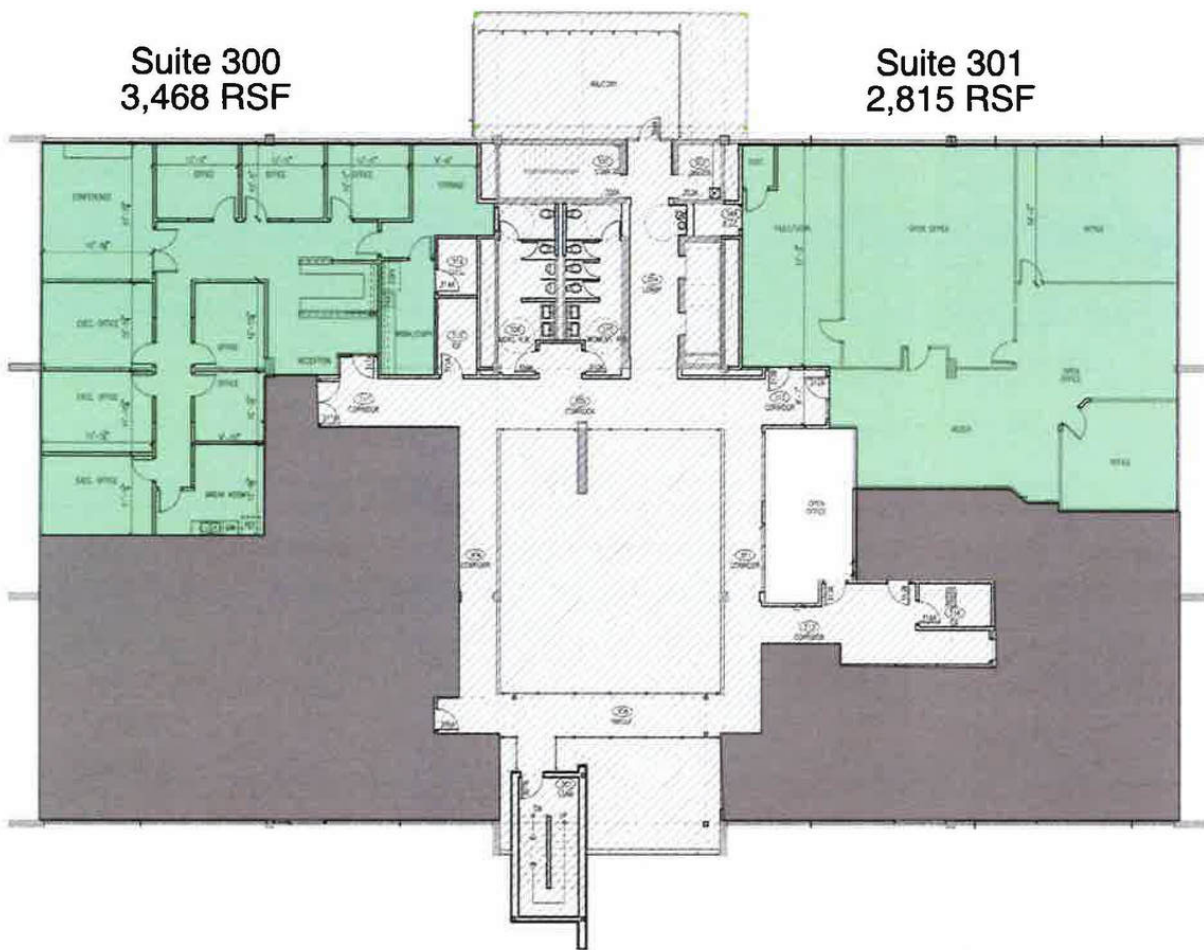
210 Park Ave, Suite 700, Oklahoma City, OK 73102

priceedwards.com

The information above has been obtained from sources believe reliable. While we do not doubt its accuracy, we have not verified it and make no guarantee, warranty, or representation about it. You and your legal and technical advisors should conduct a careful, independent investigation of the property to determine to your satisfaction to the suitability of the property for your needs.

6701 BROADWAY EXT.

Floor Plans



TRE DUPUY

Office Specialist

tdupuy@priceedwards.com

405.843.7474

210 Park Ave, Suite 700, Oklahoma City, OK 73102

priceedwards.com