



INDUSTRIAL SPACE NOW AVAILABLE

PROPERTY OVERVIEW

| | | | | |
|---------------------------|--------------------|----------------------|---------------------|-----------------------------------------------------------------------------|
| Available SF: | Building 1: | 4,200 SF | Building 1: | 4,200 SF |
| | Office: | 1,400 SF | | 4,200 SF |
| | | | | 3 drive through bays (70') |
| | Building 2: | 1,152 SF (24' x 48') | | Truck Service Pit |
| | | | | 6 - 16' overhead doors |
| Lease Rate: | | \$5,500/month | Office Area: | 1,400 SF |
| | | | | Large reception area, 2 offices, storage areas, restrooms, shop locker room |
| Total Square Feet: | | 6,752 SF | Building 2: | 1,152 SF (24' x 48') |
| | | | | 4 dock doors |
| | | | Yard: | 3.5 acres |
| | | | | Fenced |
| | | | | Graveled |
| | | | | Trailer drop pads |
| | | | | 2 entry drives |

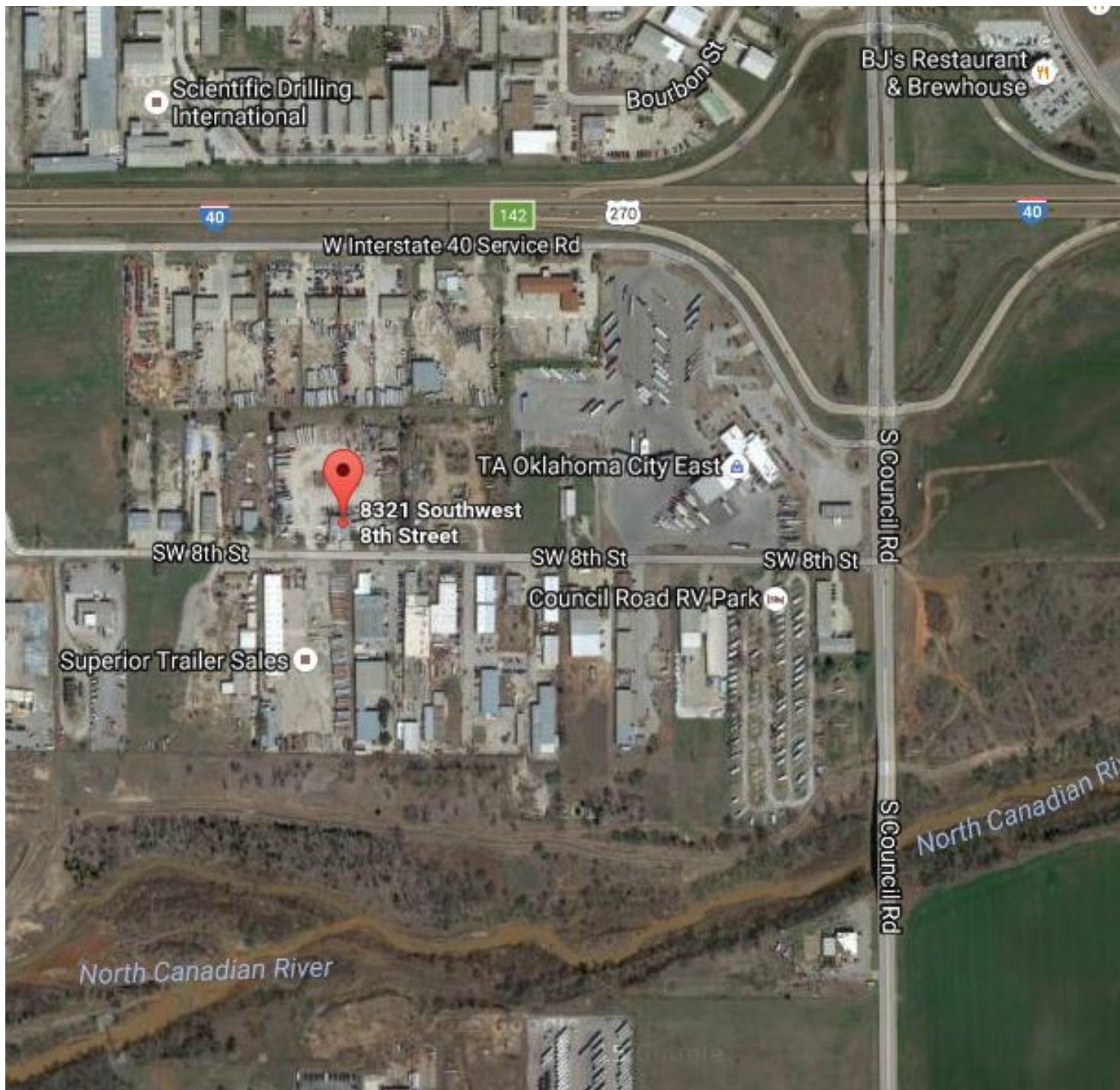
MARK PATTON
405.843.7474
mpatton@priceedwards.com
priceedwards.com

CODY BEAT
405.239.1235
cbeat@priceedwards.com
priceedwards.com



MARK PATTON
405.843.7474
mpatton@priceedwards.com
priceedwards.com

CODY BEAT
405.239.1235
cbeat@priceedwards.com
priceedwards.com



MARK PATTON
405.843.7474
mpatton@priceedwards.com
priceedwards.com

CODY BEAT
405.239.1235
cbeat@priceedwards.com
priceedwards.com