

# Five Broadway Executive Park

6601 N. Broadway Extension, Oklahoma City, OK 73116



## OFFICE SPACE NOW AVAILABLE

**Available SF:** Suite 150 ±1,744 SF

**Lease Rate:** \$16.75 SF/yr (Full Service)  
with \$ .50/SF annual increases

**Building Size:** 45,723 SF

## PROPERTY OVERVIEW

- Immediate access to Broadway Extension
- Frontage on Broadway Extension
- Ground floor space immediately off entry
- Mix of office, conference rooms and open areas
- Floor to ceiling windows
- Professionally managed
- Building signage available for entire space

## LOCATION OVERVIEW

The building is located within Broadway Executive Park and is conveniently located at N.W. 63rd and Broadway Extension. The site offers excellent access to all major highways in the Oklahoma City area. The 22 acre park is beautifully landscaped and offers a premiere office location.

## FOR MORE INFORMATION, CONTACT

**Tom Fields**  
[tfields@priceedwards.com](mailto:tfields@priceedwards.com)  
405.239.1205  
210 Park Ave, Suite 700  
Oklahoma City, OK 73102  
[www.priceedwards.com](http://www.priceedwards.com)

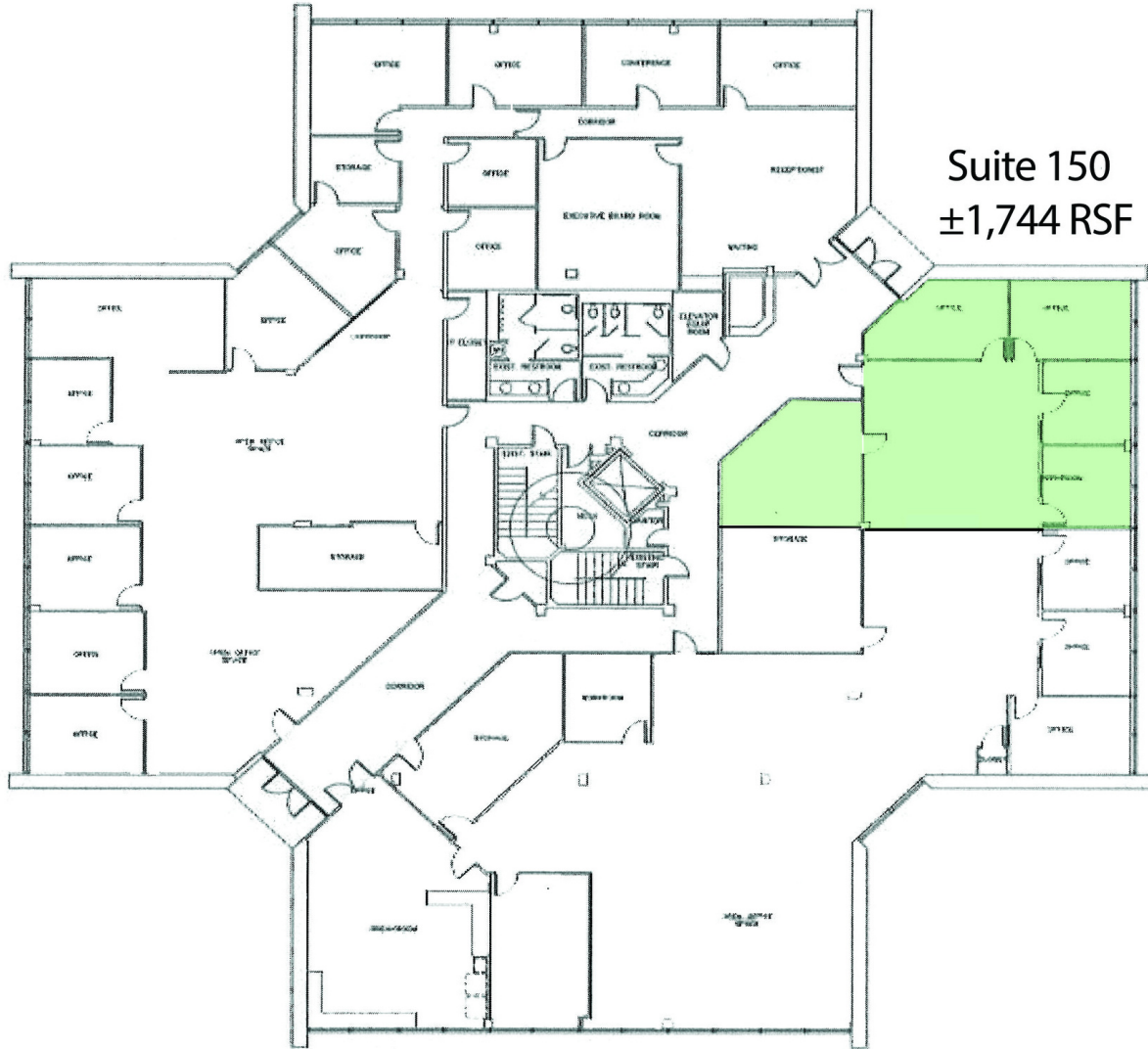
**Craig Tucker**  
[ctucker@priceedwards.com](mailto:ctucker@priceedwards.com)  
405.843.7474  
210 Park Ave, Suite 700  
Oklahoma City, OK 73102  
[www.priceedwards.com](http://www.priceedwards.com)

# Five Broadway Executive Park

6601 N. Broadway Extension, Oklahoma City, OK 73116



## First Floor



Suite 150  
±1,744 RSF

1ST FLOOR PLAN

The information above has been obtained from sources believed reliable. While we do not doubt its accuracy, we have not verified it and make no guarantee, warranty, or representation about it. You and your legal and technical advisors should conduct a careful, independent investigation of the property to determine to your satisfaction to the suitability of the property for your needs.