

# BancFirst Tower

100 N Broadway Ave., Oklahoma City, OK 73102



## OFFERING SUMMARY

Available SF:	886 - 3,375 SF
Lease Rate:	\$18.50 SF/yr
Lease Type:	Full Service
Building Size	507,038
Renovated:	2020
Submarket:	CBD

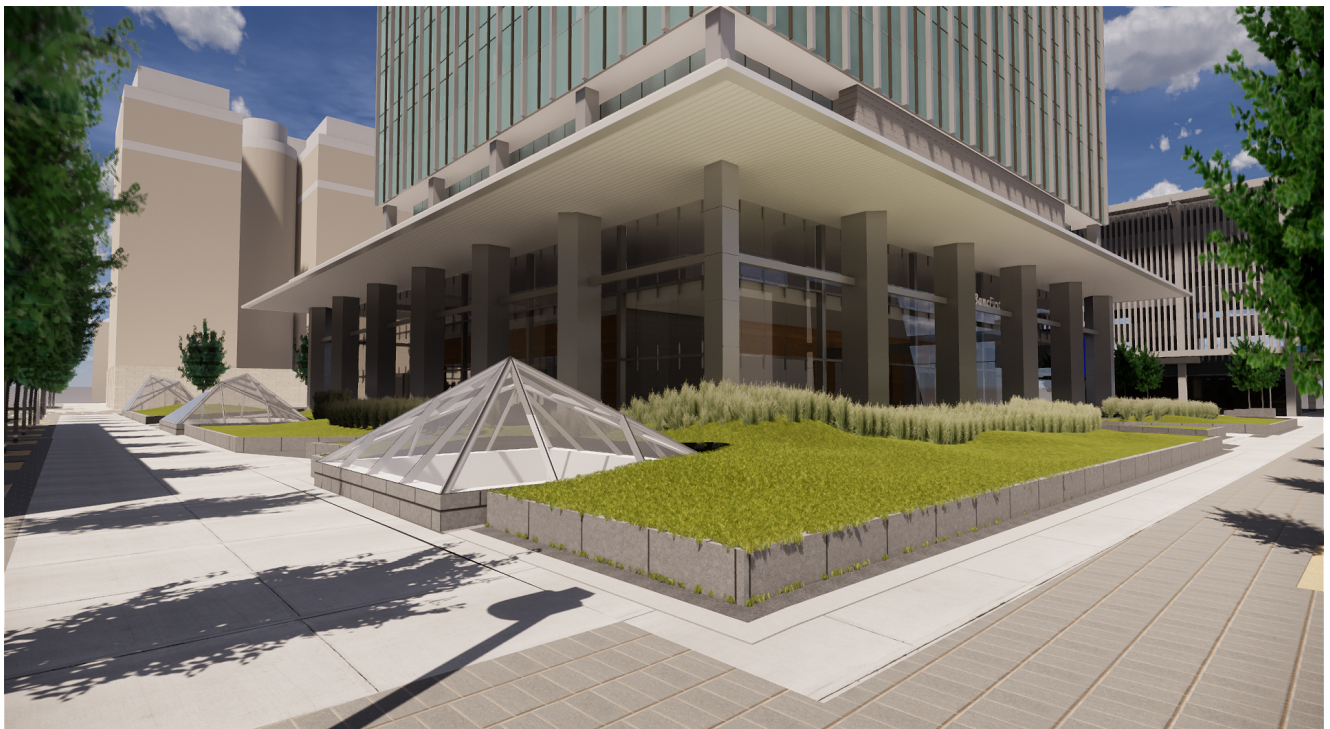
## PROPERTY HIGHLIGHTS

- Future home to BancFirst with banking facility on-site
- Multi-million dollar renovation
- Petroleum Club located on floors 33 and 34
- Covered parking to accommodate companies of all sizes
- On-site engineering and management offices
- Streetcar accessible
- Connected to The Underground
- 24/7 on-site security

**TRE DUPUY**  
405.843.7474  
tdupuy@priceedwards.com

# BancFirst Tower

100 N Broadway Ave., Oklahoma City, OK 73102



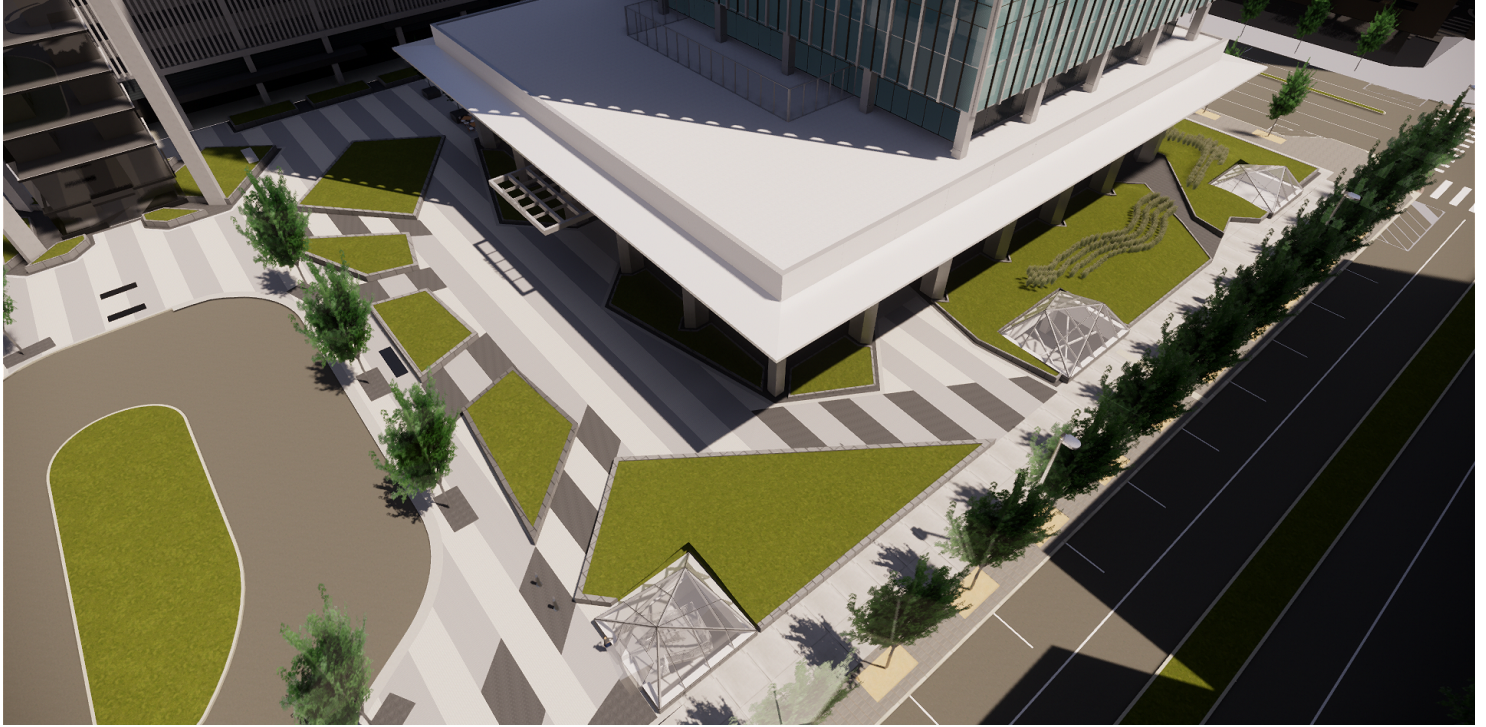
**TRE DUPUY**  
405.843.7474  
tdupuy@priceedwards.com

The information above has been obtained from sources believe reliable. While we do not doubt its accuracy, we have not verified it and make no guarantee, warranty, or representation about it. You and your legal and technical advisors should conduct a careful, independent investigation of the property to determine to your satisfaction to the suitability of the property for your needs.



# BancFirst Tower

100 N Broadway Ave., Oklahoma City, OK 73102



**TRE DUPUY**  
405.843.7474  
tdupuy@priceedwards.com

The information above has been obtained from sources believe reliable. While we do not doubt its accuracy, we have not verified it and make no guarantee, warranty, or representation about it. You and your legal and technical advisors should conduct a careful, independent investigation of the property to determine to your satisfaction to the suitability of the property for your needs.

# BancFirst Tower

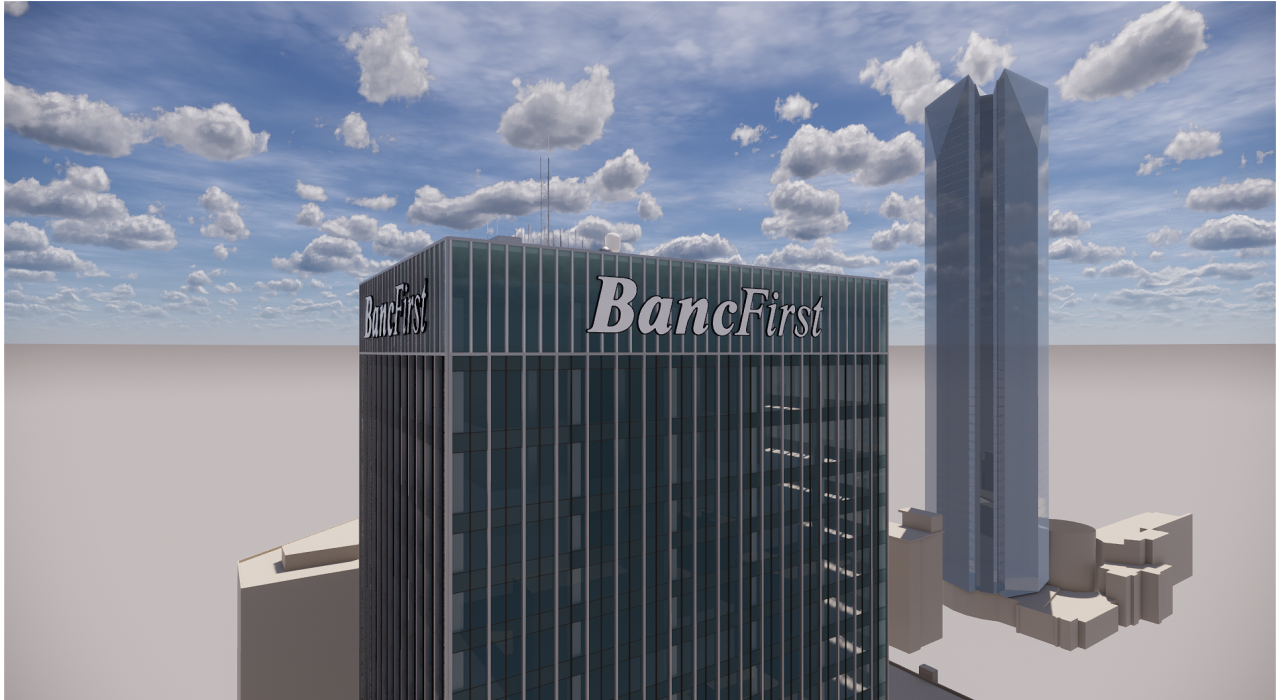
100 N Broadway Ave., Oklahoma City, OK 73102

**LEASE TYPE** | Full Service

**TOTAL SPACE** | 886 - 3,375 SF

**LEASE TERM** | Negotiable

**LEASE RATE** | \$18.50 SF/yr



SUITE	TENANT	SIZE (SF)	LEASE TYPE	LEASE RATE	DESCRIPTION
Suite 2270	Available	1,182 SF	Full Service	\$18.50 SF/yr	-
Suite 3040	Available	1,042 SF	Full Service	\$18.50 SF/yr	-
Suite 3240	Available	886 SF	Full Service	\$18.50 SF/yr	-
Suite 3200	Available	3,375 SF	Full Service	\$18.50 SF/yr	-

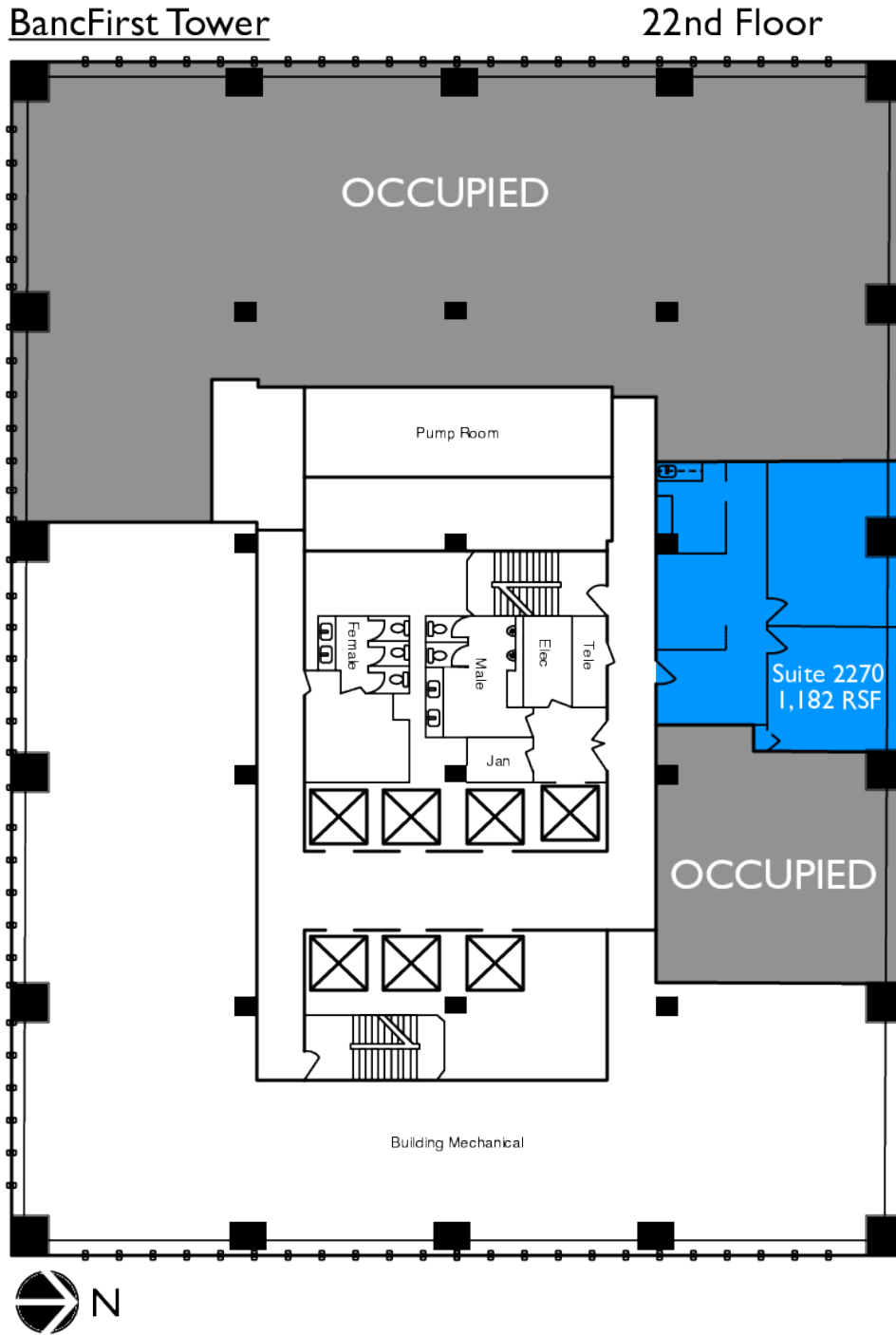
**TRE DUPUY**  
405.843.7474  
tdupuy@priceedwards.com

The information above has been obtained from sources believe reliable. While we do not doubt its accuracy, we have not verified it and make no guarantee, warranty, or representation about it. You and your legal and technical advisors should conduct a careful, independent investigation of the property to determine to your satisfaction to the suitability of the property for your needs.



# BancFirst Tower

100 N Broadway Ave., Oklahoma City, OK 73102

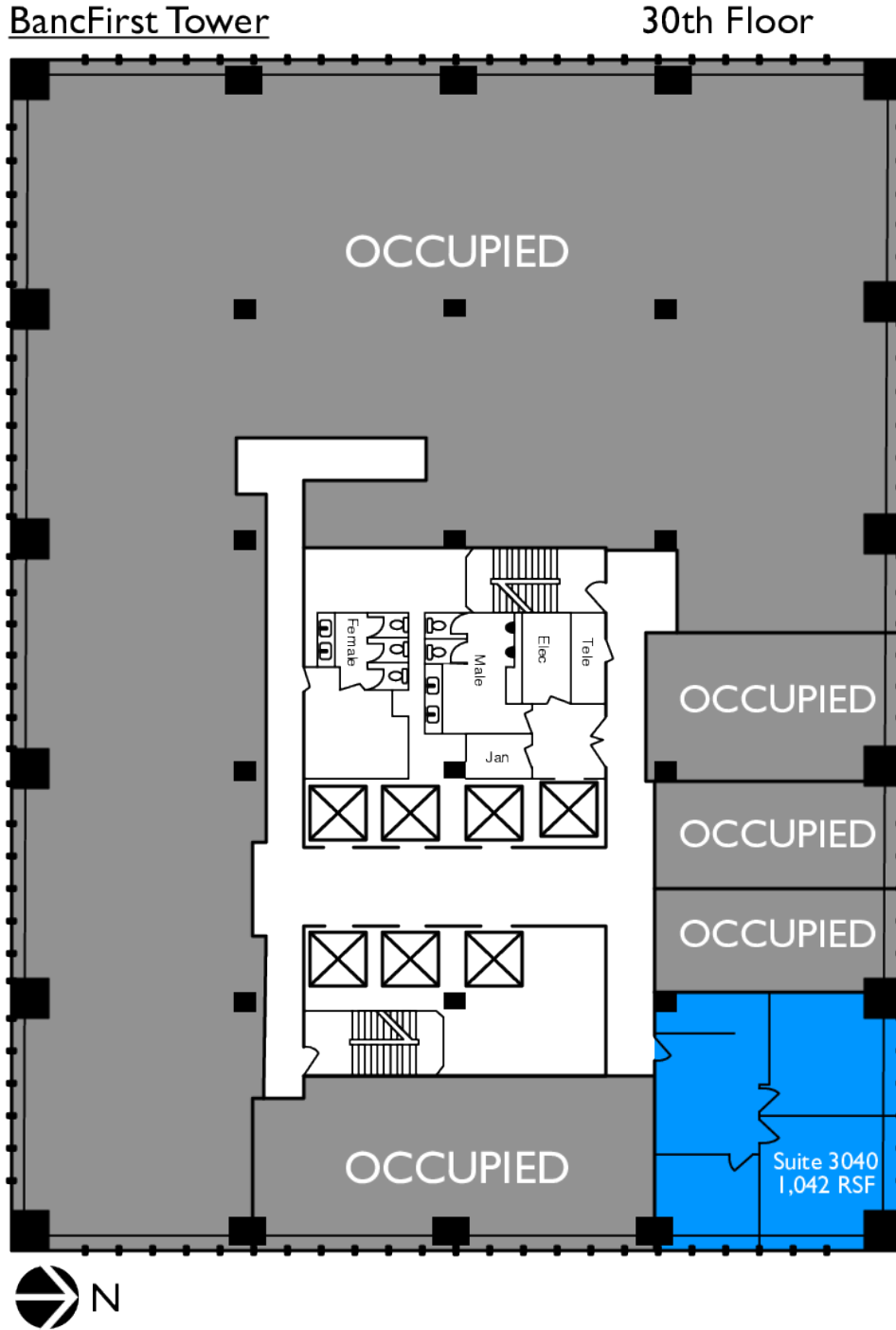


**TRE DUPUY**  
405.843.7474  
tdupuy@priceedwards.com

The information above has been obtained from sources believe reliable. While we do not doubt its accuracy, we have not verified it and make no guarantee, warranty, or representation about it. You and your legal and technical advisors should conduct a careful, independent investigation of the property to determine to your satisfaction to the suitability of the property for your needs.

# BancFirst Tower

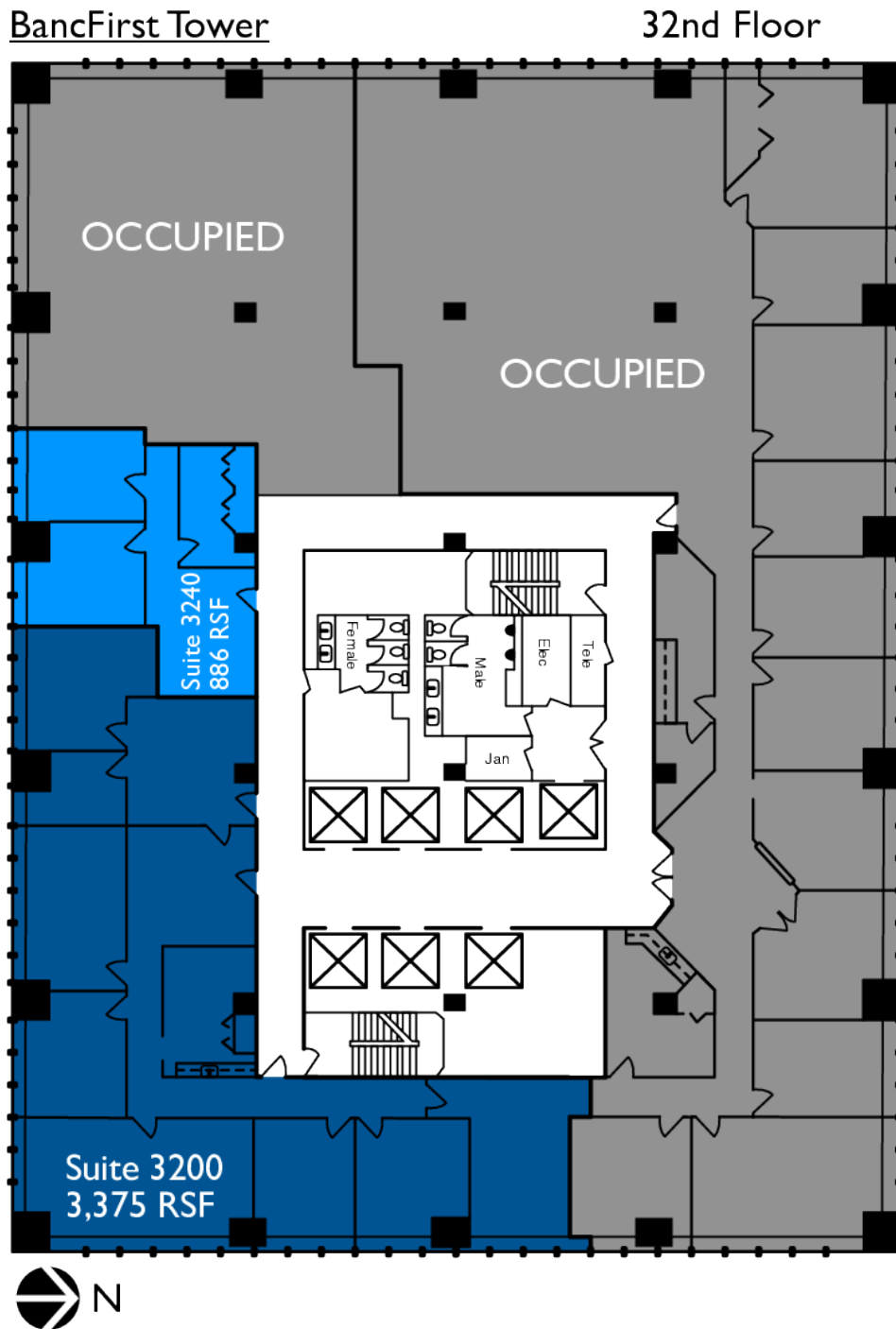
100 N Broadway Ave., Oklahoma City, OK 73102





# BancFirst Tower

100 N Broadway Ave., Oklahoma City, OK 73102

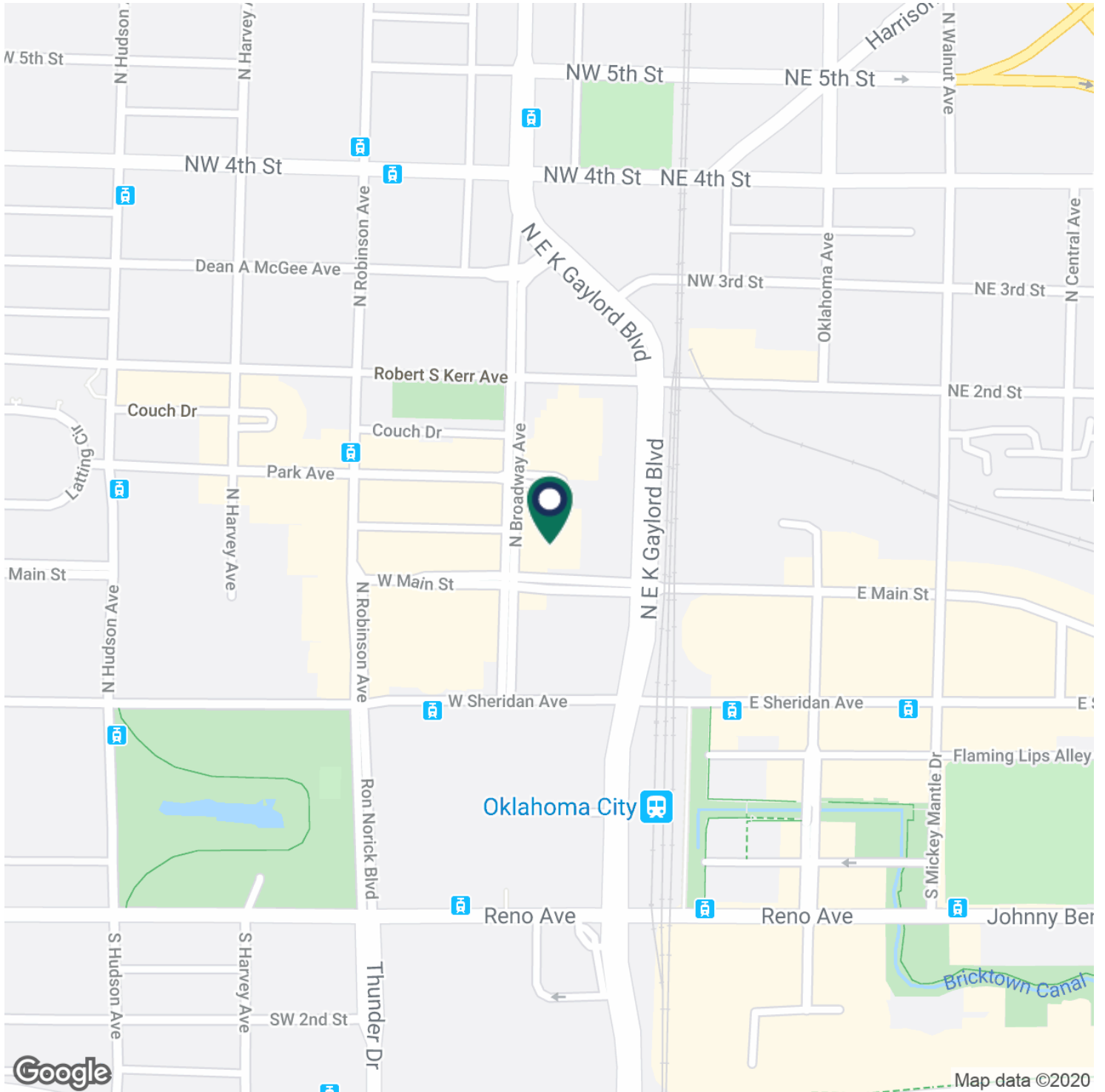


**TRE DUPUY**  
405.843.7474  
tdupuy@priceedwards.com

The information above has been obtained from sources believe reliable. While we do not doubt its accuracy, we have not verified it and make no guarantee, warranty, or representation about it. You and your legal and technical advisors should conduct a careful, independent investigation of the property to determine to your satisfaction to the suitability of the property for your needs.

# BancFirst Tower

100 N Broadway Ave., Oklahoma City, OK 73102



TRE DUPUY

405.843.7474

tdupuy@priceedwards.com

The information above has been obtained from sources believe reliable. While we do not doubt its accuracy, we have not verified it and make no guarantee, warranty, or representation about it. You and your legal and technical advisors should conduct a careful, independent investigation of the property to determine to your satisfaction to the suitability of the property for your needs.