



OFFERING SUMMARY

Lease Rate:	\$650.00/month
Building Size:	4,240 SF
Available SF:	Approx.156 SF
Year Built:	1906
Renovated:	2019

PROPERTY OVERVIEW

The Berry is an ideal combination of historic details and convenience. One executive suite on the ground floor of this property is available for lease. All utilities are included in rent, tenant is responsible for their own janitorial.

Suite is approximately 12'x13' with shared amenities. Suite includes a window. Flooring and paint are updated.

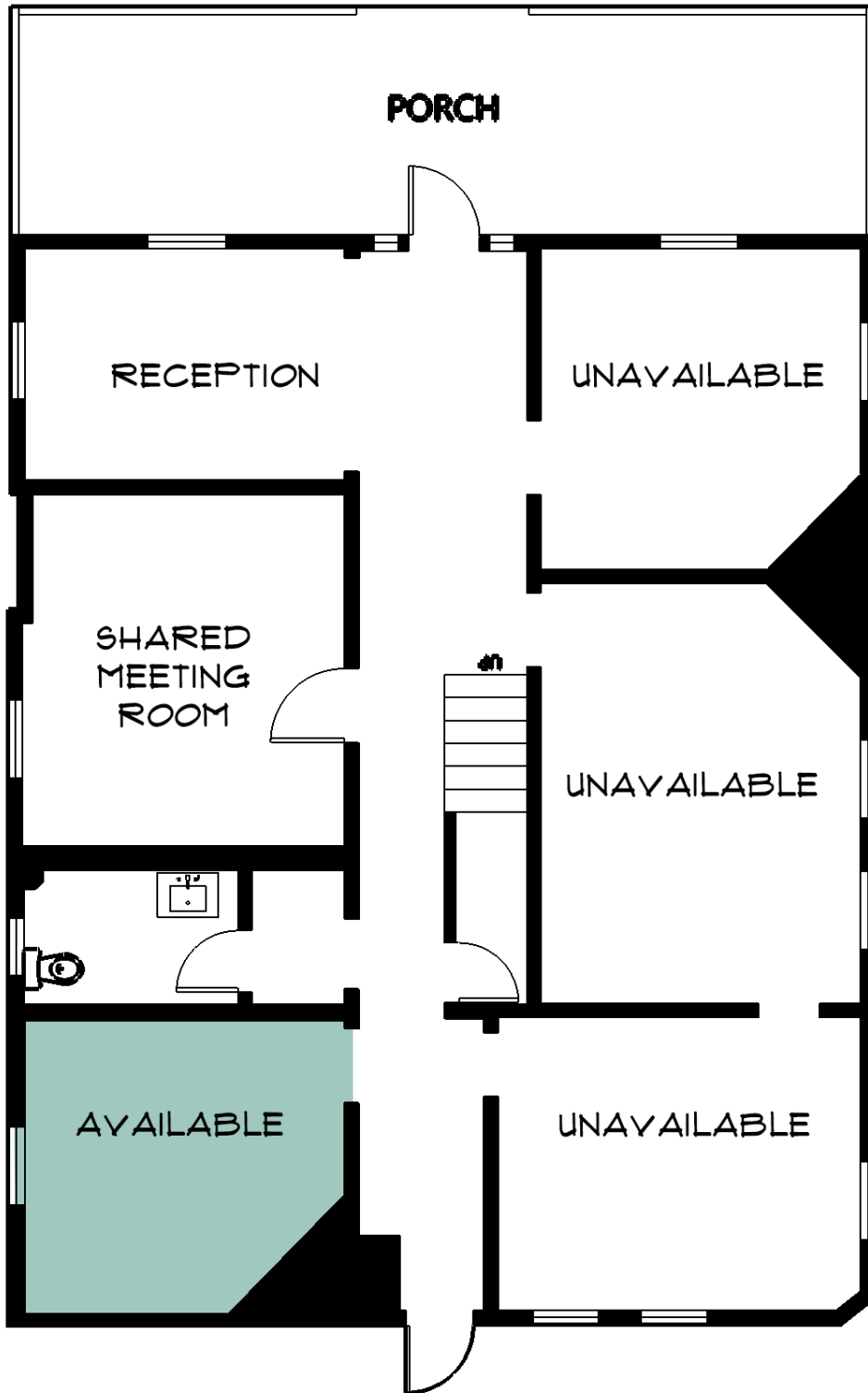
PROPERTY HIGHLIGHTS

- Flexible Lease Term
- Private office with shared amenities
- Small property with great existing tenants
- Convenient location near Downtown OKC, neighboring Cafe Antiqua

ALLISON BARTA BAILEY
405.239.1245
abailey@pricedwards.com
pricedwards.com

The Berry

1923 N Classen Blvd, Oklahoma City, OK 73106



ALLISON BARTA BAILEY
405.239.1245
abailey@priceedwards.com
priceedwards.com